

Model 711-2 Floor & 716-2 Wall Mount Tiltmeter (Biaxial)

These precision biaxial tiltmeters bolt or clamp to any surface and are well suited for areas of heavy traffic or vibration. They are identical to our popular Model 701-2 Platform Tiltmeter, but have 0.5- inch (12.7- mm) diameter holes in their

three corners instead of adjustable legs. The holes fit over threaded stainless steel studs, provided with each order. The tiltmeter is double-nutted to the studs after they have been firmly anchored in the mounting surface.

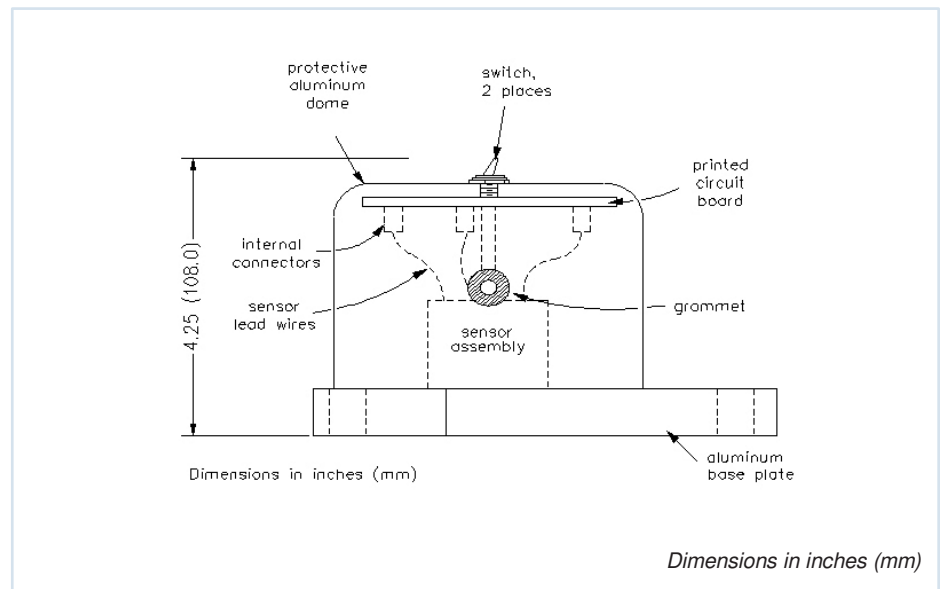


PRECISION BIAXIAL TILTMETERS BOLT OR CLAMP TO ANY SURFACE

The internal electronics of Models 711-2 and 716-2 will drive cable lengths of 1000m. These tiltmeters are widely used for structural monitoring, load testing, and precision alignment of antennae and machinery.



Model 711-2 Floor Mount Tiltmeter

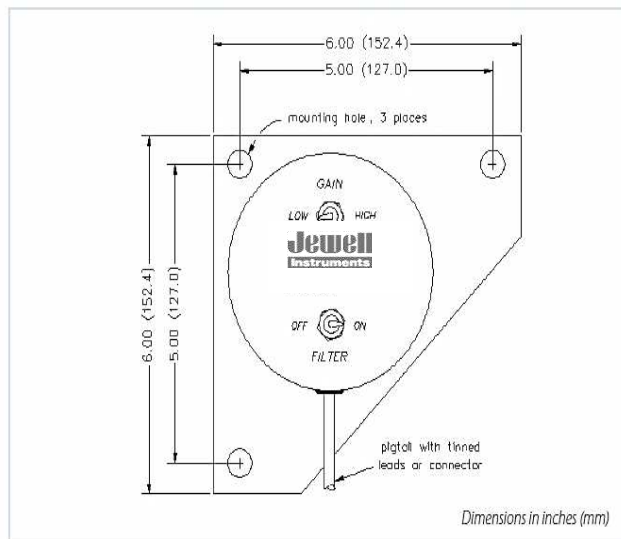


Side View Model 711-2 Floor Mount Tiltmeter

	MODELS 711-2A & 716- 2A HIGH-GAIN VERSION	MODELS 711-2B & 716-2B MID-RANGE VERSION
ANGULAR RANGE Low-Gain Setting: High-Gain Setting:	$\pm 8000 \mu\text{radians}^*$ (± 0.46 degree) $\pm 800 \mu\text{radians}$ (± 0.046 degree)	± 8 degrees ± 0.8 degrees
SCALE FACTOR Low-Gain Setting:♦ High-Gain Setting:♦	1 $\mu\text{radian/mV}$ 0.1 $\mu\text{radian/mV}$	1 degree/volt 0.1 degree/volt
RESOLUTION	0.1 μradian	1 μradian
REPEATABILITY	1 μradian (static)	2 $\mu\text{radians}$ (static)
LINEARITY Low-Gain Setting: High-Gain Setting:	2% of full span 0.2% of full span	1.5% of full span 0.2% of full span
TIME CONSTANTS Filter On: Filter Off:	7.5 sec 0.5 sec	7.5 sec 0.4 sec
TEMPERATURE COEF. Scale Factor: Zero Shift:	KS = +0.05% /°C typ. KZ = $\pm 3 \mu\text{radians}/^\circ\text{C}$ typ.	KS = +0.05% /°C typ. KZ = ± 0.001 degree/°C typ.
ENVIRONMENTAL	-8° to +70°C operation and storage; -25°C version available	-25° to +70°C operation and storage; 0-90% humidity, non-condensing
TILT OUTPUT	Each axis: ± 8 Volts DC (single-ended) and ± 16 Volts DC (differential)	
TEMPERATURE OUTPUT	0.1°C/mV (single-ended), $\pm 0.75^\circ\text{C}$ accuracy, 0°C = 0 mV	
OUTPUT IMPEDANCE	270 Ohms, short circuit and surge protected	
POWER REQUIREMENTS	± 11 to ± 15 VDC @ +11 and -6mA, 250 mV peak-to-peak ripple maximum, reverse polarity protected	
MOUNTING	Three 0.5 inch (12.77 mm) mounting holes; tiltmeter fastens to stainless steel mounting studs (included)	
MATERIALS	Anodized and painted aluminum	
CABLE	3m (10 ft) multi-conductor cable + overall shield, PVC jacket, connectors included	
SIZE & WEIGHT	6 X 6 X 4 inches (15 X 15 X 10 cm), 3 lb. (1.4 kg)	

*1 degree = 3600 arc seconds = 17453 $\mu\text{radians}$ (micro radians); ♦ Single-ended outputs; divide by two for differential scale factors.

Top View Model 711-2 Floor Mount Tiltmeter



USEFUL ACCESSORIES:

70304	Additional Cable, specify length
62301	Female panel receptacle (mates to P/N 62302 connector on cable)
62304	Extra female in-line receptacle (one is included with tiltmeter)
718-AL	Mounting plate, 8.5 X 9 in (216 X 229 mm); speeds installation
719-AL	Universal mounting bracket, attaches Model 711-2 to wall or model 716-2 to floor
84410	Extra mounting stud assembly, specify quantity required

711-2



A: Floor Mount, High-Gain Version
B: Floor Mount, Mid-Range Version
Floor Mount, Wide-Angle Version

716-2



A: Wall Mount, High-Gain Version
B: Wall Mount, Mid-Range Version