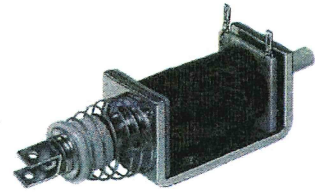


SFA Solenoid

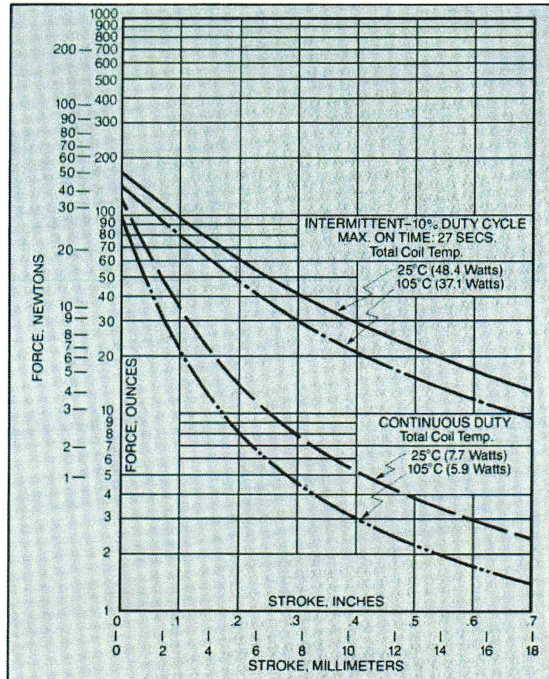


Specifications

Type of Operation: Push or pull
Standard Voltages: 6 VDC, 12 VDC, 24 VDC, (Others available on request)
Insulation Material: Class "B" standard (Others available on request)
Coil Finish: Acetate tape standard (Also available: varnish dip, glass cloth tape, fungus resistant finish)
Coil Terminations: Terminals per drawing standard (Also available: flying leads, bent terminals, banded terminals, solder lugs)

Plating Standards: Frame—Zinc, chromate; Clevis—Zinc; Plunger—Electroplate Nickel; Stop—Electroless Nickel (Others available on request)
Plunger Type: Slot and cross drilled per drawing standard (Options available per drawing)
Plunger Weight: 1.3 ounces standard

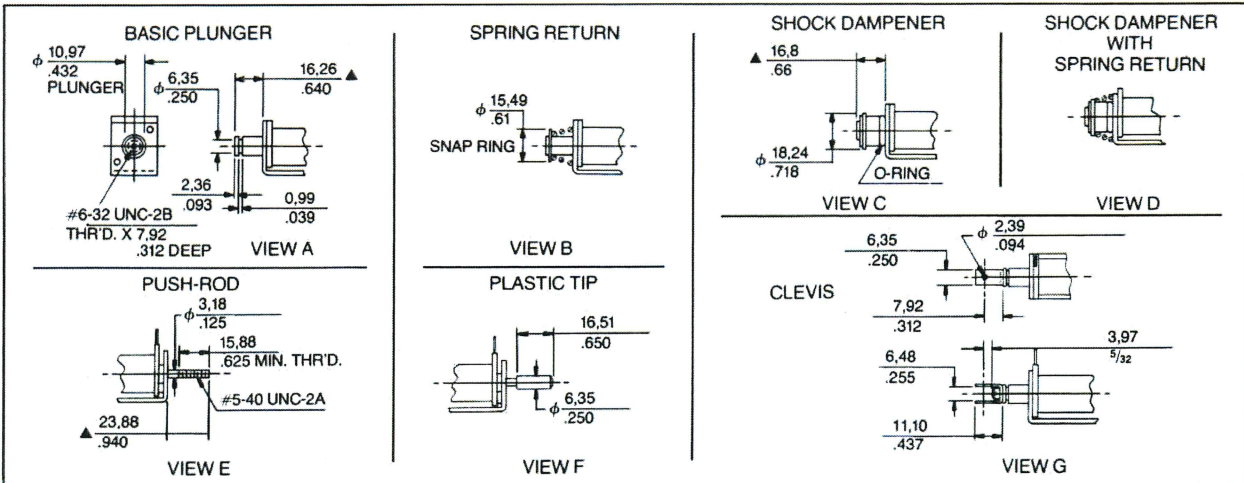
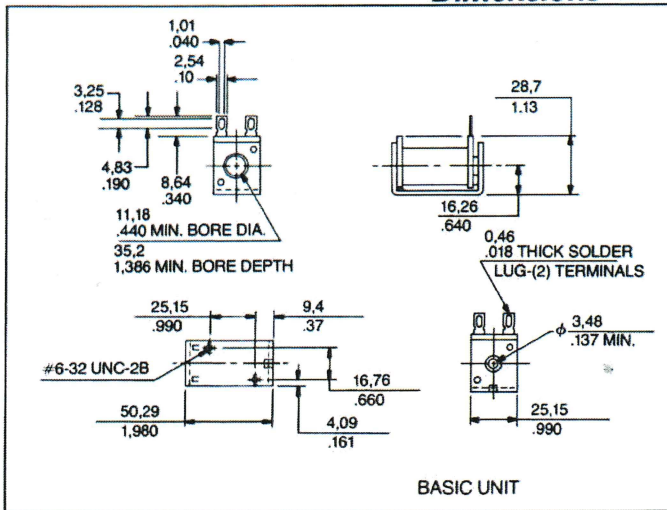
DC Performance Data



Duty Cycle	Maximum "On" Time	Stroke vs. Force* (inches)	Rated Power (watts)
Continuous	∞	0.0	120.0
		0.2	14.0
		0.4	5.3
		0.6	3.0
10%	27 sec.	0.0	170.0
		0.2	62.0
		0.4	29.0
		0.6	17.0

* TYPICAL FORCE @ 25°C AND NOMINAL RATED DC VOLTAGE

Dimensions



▲ ENERGIZED DIM.

JEWELL INSTRUMENTS, LLC

850 PERIMETER ROAD → MANCHESTER, NEW HAMPSHIRE 03103 USA
 TOLL FREE: 800 227-5955 → TEL: 603 669-6400 → FAX: 603 669-5962
 EMAIL: sales@jewellinstruments.com → WEB: www.jewellinstruments.com