

2014 Q4



3.6" x 6.6" x 1.35"

Features:

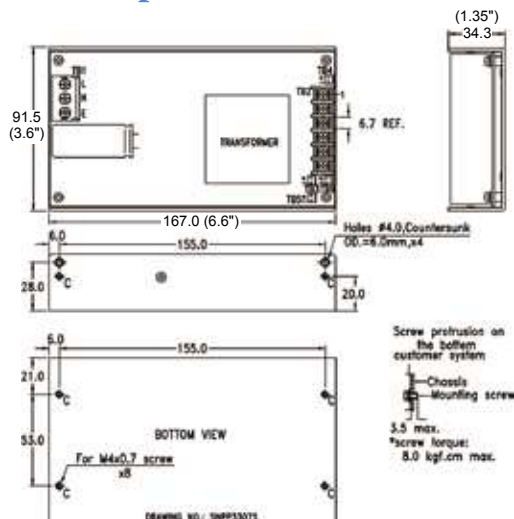
- Design for BF application
- Safety Class II & EMI Class B
- With +5Vsb & +12V Fan output
- Remote on/off & Remote sense
- With Power good & Power fail signal
- Fan speed controlled by load
- High mechanical torque start-up
- -30°C to +70°C operating temperature
- 5,000m operation altitude
- Convection cooling for rated load
- Forced air for max. load

General Specifications:

Input voltage 90 VAC to 264 VAC
 Input frequency 47 Hz to 63 Hz
 Standby power < 0.2W at no load
 (remote off status) < 0.5W at 5Vsb/40mA output
 Inrush current < 30/60A at 115/230VAC
 Efficiency 90% typ.
 Hold up time 18ms typ.
 Over load/Short circuit protection auto recovery
 Over voltage protection latch off
 Operating temperature -30°C to 70°C
 derating: 2.5% / °C > 50°C

Cooling 300W at convection cooling
 360W at forced air cooling
 Storage temperature -40°C to +85°C
 EMI EN55022 "B", EN61000-3-3
 Harmonics..... EN61000-3-2, class D
 EMS..... EN61000-4-2,-3,-4,-5,-6,-8,-11
 Safety UL/CSA/EN60950-1, 2nd edition
 ANSI/AMMI/CSA/EN60601-1, 3rd edition
 Energy Saving ENERGY STAR
 for computers version 6.0
 for displays version 6.0
 ErP regulation EC(No) 1275/2008

Mechanical Specifications:



Notes:

1. Size:
3.6" x 6.6" x 1.35"
2. Mounting Hole:
Vertical: 155 (mm)
Horizontal: 155 x 53 (mm)
3. Connectors:
AC input: Terminal Blocks (with opt. PC cover)
DC output: Terminal Blocks (with opt. PC cover)
Remote ON/OFF & Standby Output & Fan output & Remote Sense:
Molex 5272-03 or equivalent
4. Output Pin assignment:
Function Pin assignment:

1	2	3	4	5	6
Vo	Vo	Vo	GND	GND	GND

Function Pin	TB3	TB4	TB5	TB6	TB7
FAN Output					
Standby Output					
Remote Sense					
Remote Control					
PG/PF					
1	GND	GND	Sense-	GND	GND
2	+12V	+5Vsb	Sense+	+	+
5. Packing:
Net weight: TBD g approx. / unit
Gross weight: TBD kg approx. / carton, TBD units / carton
Carton size (mm): TBD (L) x TBD (W) x TBD (H)

10 years Warranty (contact Skynet's Distributors for details)

Output Specifications:

MODEL NO.	OUTPUT RAIL	LOAD				INITIAL ACCURACY	STEP EFFICIENCY			AVERAGE EFFICIENCY
		MIN.	RATED	MAX.	PEAK		@ 20% LOAD	@ 50% LOAD	@ 100% LOAD	
SNP-P307-S	+12V	0A	25A	33.3A	50A	+11.9V~+12.1V +4.5V~+5.5V	87%	91%	92%	90%
	+5Vsb	0A	1.5A							
SNP-P309-S	+24V	0A	12.5A	16.66A	25A	+23.9V~+24.1V +4.5V~+5.5V	87%	91%	92%	90%
	+5Vsb	0A	1.5A							

Note:

- Standby Power Consumption with System:**
For computers and displays, ENERGY STAR in U.S. and ErP regulation in Europe require the input power should be less than 0.5W at standby mode.
- Output Load:**
300W for convection cooling; 360W for forced air cooling.
- Peak Load Duration:**
Peak 600W can last for 5 sec.
- Isolation Grade:**
Primary ↔ Ground : 1MOPP (1500Vac)
Primary ↔ Secondary : 2MOPP (4000Vac)
Secondary ↔ Ground : 1MOPP (1500Vac)
- Leakage Current:**
Earth leakage current < 300uA
Touch current < 100uA
- Model Selection:**
SNP-P30x-S is for ITE & medical applications.