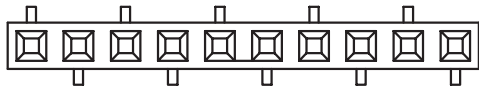
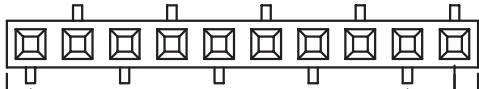


TYPE 1 = 6100 xx 11921

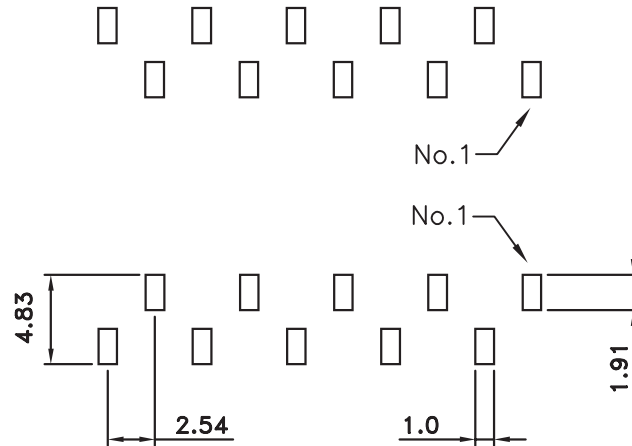
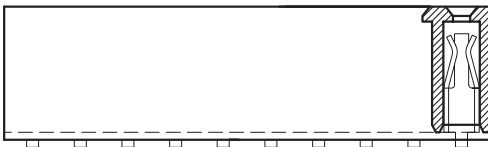
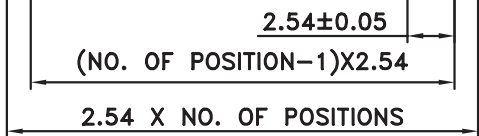


No.1

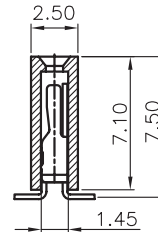
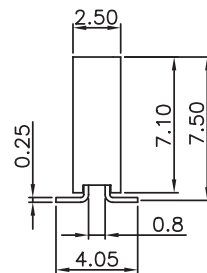
TYPE 2 = 6100 xx 13321



No.1



PCB LAYOUT - COMPONENT VIEW



TECHNICAL CHARACTERISTICS

MATERIAL

INSULATOR: NYLON 46
 FLAMABILITY RATING: UL94-V0
 COLOR: BLACK
 CONTACT MATERIAL: COPPER ALLOY
 CONTACT TYPE: STAMPED
 CONTACT PLATING: GOLD
 QUALITY CLASS: 3 AS PER CECC 75 301-802
 PITCH: 2.54MM

ENVIRONMENTAL

OPERATING TEMPERATURE: -40 UP TO 125°C
 COMPLIANCE: LEAD FREE AND ROHS

ELECTRICAL

CURRENT RATING: 3A
 WORKING VOLTAGE: 250V AC
 INSULATOR RESISTANCE: >1000 MOHM
 DIELECTRIC WITHSTANDING VOLTAGE: 500V AC/MN
 CONTACT RESISTANCE: 20 mOHM MAX

SOLDERING

REFLOW PROCESS ONLY

PACKAGING

TUBE

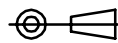
DIMENSION

A = 2.54 x (NB. PIN - 1)
 B = 2.54 x NB. PIN

RoHS Compliant

G	17-JUN-14	PACKAGING	AS
F	07-APR-09	DIM & PINNING	JP
E	23-NOV-07	MODIFICATIONS	EC
D	19-JUN-07	DRAW + PART NO	EC
C	12-DEC-06	DRAW	EC
B	29-MAR-04	LEAD FREE	JP
A	16-MAR-04	PDF	JP
REV	DATE	FILE	BY

PROJECTION:



APPROVAL: RJ

GENERAL TOLERANCE

.X = +/- 0.2
 .XX = +/- 0.15

UNIT: MM

SCALE:

SHEET: 1/1

DRAW: PEARL



DESCRIPTION: 2.54MM SMT SOCKET HEADER

WERI PART NO: 6100 XX 13321 & 6100 xx 11921

SIZE

A4