

A4BT Time-delay/Class L

When your heavier loads need protection A4BT fuses won't let you down

The high interrupting rating of A4BT current-limiting fuses is ideally suited for protecting mains, feeders, and general circuits. The 10-second time-delay at 500% of fuse rating is ideal for large motors and other loads with a high inrush. A4BT fuses are suitable for DC applications up to 500VDC. An A4BT fuse can be applied to normal loads up to its full ampere rating to allow 100% rating of equipment, while also providing superior current-limiting ability.

Features/Benefits:

- Unique dimensions prevent replacement by other fuse classes.
- Blade-stamped catalog numbers for permanent identification
- Glass melamine body and plated terminals provide superior reliability in harsh environments

Highlights:

- Current-limiting
- Full 10-second delay
- DC ratings
- Uniform characteristics in all ampere ratings

Applications:

- Motors
- Motor controllers
- Transformers
- Mains
- Feeders



Ratings:

- Volts** : 600VAC
- : 500VDC
- Amps** : 200 to 2,000A
- IR** : 200kA I.R. AC
- : 100kA I.R. DC

Approvals:

- UL Listed to standard 248-10 (601-2000A) File E2137
- CSA Certified to standard C22.2 No. 248.10 (601-2000A)
- Self-certified for DC per UL248 (601-2000)



A4BT Time-delay/Class L

Catalog Numbers (amps)

| | | |
|---------|----------|----------|
| A4BT200 | A4BT601 | A4BT1100 |
| A4BT250 | A4BT650 | A4BT1200 |
| A4BT300 | A4BT700 | A4BT1400 |
| A4BT350 | A4BT750 | A4BT1500 |
| A4BT400 | A4BT800 | A4BT1600 |
| A4BT450 | A4BT900 | A4BT1800 |
| A4BT500 | A4BT1000 | A4BT2000 |
| A4BT600 | | |

Recommended Fuse Blocks for Amp-Trap® Class L Fuses

| Fuse Ampere Rating | Catalog Number 600V or Less 3-Pole |
|--------------------|--|
| 100-800 | P48F |
| 801-1200 | P412F |

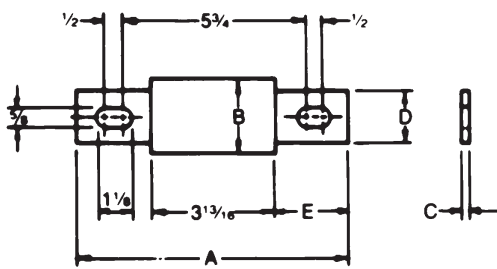
Catalog number P48F is UL recognized
Catalog number P412F is self-certified

A variety of pole configurations and termination provisions are available. Refer to Section H for details.

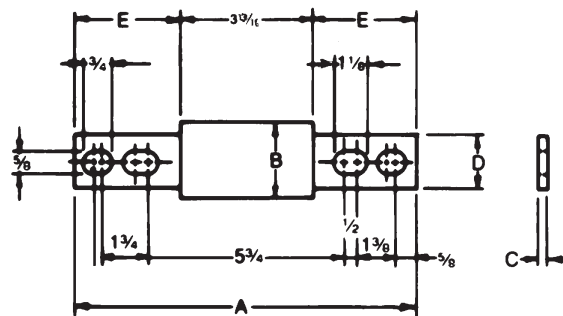
Dimensions

| Ampere Rating | A | | B | | C | | D | | E | |
|---------------|--------|-----|-------|----|------|----|-------|----|---------|----|
| | in | mm | in | mm | in | mm | in | mm | in | mm |
| 200-600 | 8-5/8 | 219 | 2 | 51 | 5/16 | 8 | 1-5/8 | 41 | 2-13/32 | 61 |
| 601-800 | 8-5/8 | 219 | 2-1/2 | 63 | 3/8 | 9 | 2 | 51 | 2-13/32 | 61 |
| 801-1200 | 10-3/4 | 273 | 2-1/2 | 63 | 3/8 | 9 | 2 | 51 | 3-15/32 | 88 |
| 1201-1600 | 10-3/4 | 273 | 3 | 76 | 7/16 | 11 | 2-3/8 | 60 | 3-15/32 | 88 |
| 1601-2000 | 10-3/4 | 273 | 3-1/2 | 89 | 1/2 | 13 | 2-3/4 | 70 | 3-15/32 | 88 |

*Safety Note: Class L fuses are dimensioned for one-way interchangeability.
A Class L fuse of any lower ampere rating can be substituted for a given Class L fuse.*



200-800A



801-2000A