

6861 to 6869 Airswitches

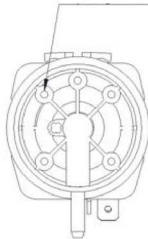
herga

Technology Ltd

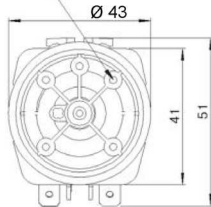
- General purpose airswitch
- Mounting plate available

Outline dimensions

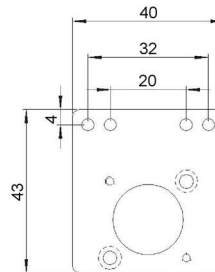
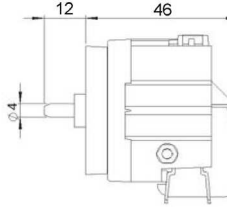
Fixing holes to suit
No. 4 self tap 4.0 deep on 28.5 PCD
Note: Longer screws will penetrate diaphragm chamber



Side Entry



Back Entry



Mounting plate 3351-109 & 2 screws
6050-6000-0001



Stock model: 6862-AO

Range options and specifications

Model No	6861-0C	6861-AC	6863-0C	6869-0C	6862-0C	6862-AC	6864-0C
Number of poles and action	SPCO momentary	SPCO latching	SPCO momentary low pressure	SPCO momentary very low pressure	DPCO momentary	DPCO latching	DPCO staggered
Air connection	Back entry, 4mm dia.						
Connecting tube part No's	2311-08						
Alternate spout Model No.	Side entry 4mm 6861-00	Side entry 4mm 6861-A0	Side entry 4mm 6863-00	Side entry 4mm 6869-00	Side entry 4mm 6862-00	Side entry 4mm 6862-A0	Side entry 4mm 6864-00
Diaphragm material	Neoprene	Silicone	Neoprene	Neoprene	Neoprene	Silicone	Neoprene
Current rating @ 250V AC	21(8)A 2HP	21(8)A 2HP	10(1.7) 1/3HP	3(1)A 1/10HP	21(8)A 2HP	21(8)A 2HP	21(8)A 2HP
Approvals available	UL 508	UL 508	UL 508	UL 508	UL 508	UL 508	

General specifications

Standards/approvals	UL 508 specific models only	Pressure range	n/a
Degree of protection	n/a	Operating temperature range	-5°C to +40°C
Connection method	Back & side entry spout, Ø4 mm	Body material	Thermoplastic
Electrical rating	See table	Weight	0.044 kg
Contact configuration	See table	Additional information	