



立得電子工業股份有限公司  
**SPECIFICATION FOR LED BACKLIGHT**

**PART NO. :** LP10B3-S210

**VERSION.** A

**DATE. :** 2004.06.28

Approved by : \_\_\_\_\_

Checked by : \_\_\_\_\_

Prepared by : \_\_\_\_\_

**LEDTECH ELECTRONICS CORPORATION**

NANYA ROAD, MUGANG, ZHAOQING CITY

GUANGDONG CHINA.

TEL:86-758-2875541,2870651,2877464,2876185,2877017

FAX:86-758-2878014

*Http:www.ledtech.com.tw*

**◆ Features**

**Free Design.**

**High Brightness.**

**Longer Life And Low Power Consumption.**

**Various Color: Yellow Green , Amber , Red , Orange , Green ,Blue...**

**Dimensions:56.73x17.9x5.5(mm)**

**View Area:52.6x15.86(mm)**

**◆ Applications**

**Bottom Backlight**

**Edge Backlight**

**◆ Chip Emitting Color:**

**GaP**

**AlGaInP**

**InGaN**

**GaAlAs**

**◆ Applications**

**LCD Backlight**

**Meterpanel Backlight**

**PDA**

**Mobile Phone**

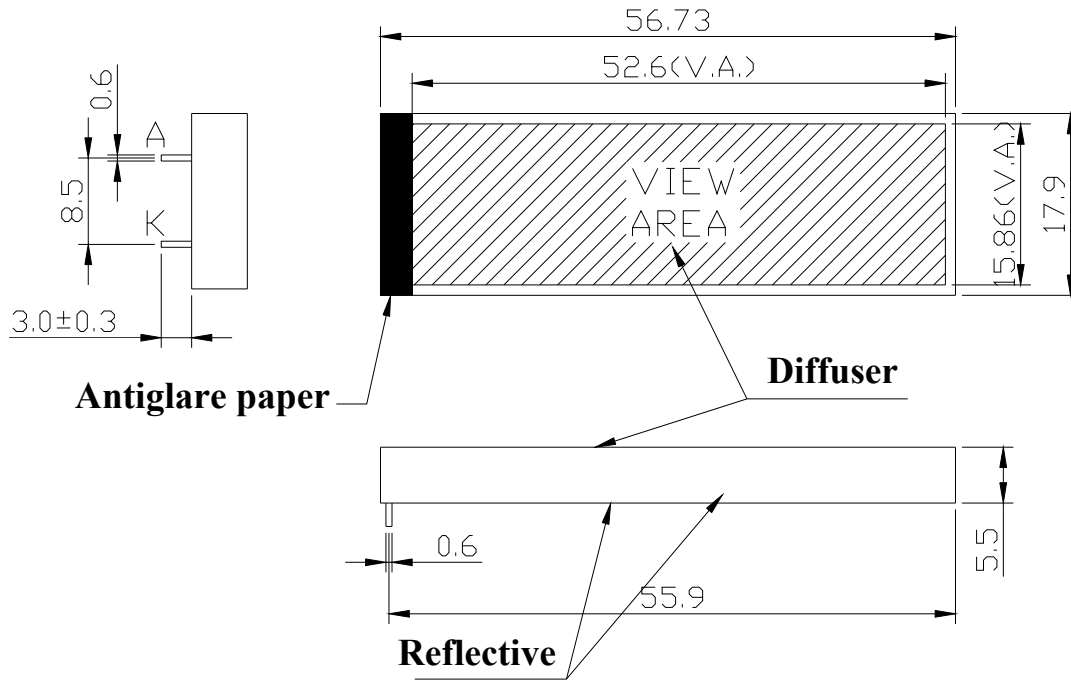
**◆ Chip Emitting Color:**

**BLUE**

**◆ Absolute Maximum Rating**

Parameter	Symbol	Rating	Unit	Remark
Forward Current	If	50	mA	
Reverse Voltage	VR	5	V	IR=10uA
Power Dissipation	PD	200	mW	
Operating Temperature	Topr	-20 ~ +70	°C	
Storage Temperature	Tsto	-30 ~ +80	°C	
The Temperature Of Soldering	Tsol	260	°C	5 sec.

**◆Dimensions:**



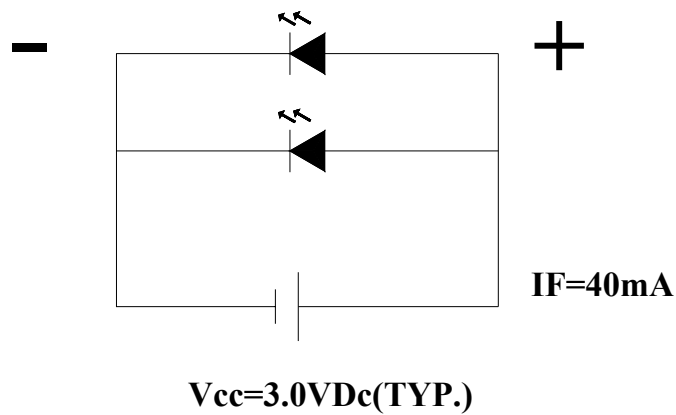
A:ANODE / K:CATHODE / V.A:52.6×15.86(mm)

**◆Notes:**

**All dimensions are in millimeters.**

**Tolerance is ±0.2mm unless otherwise noted.**

**◆Circuit Diagram**

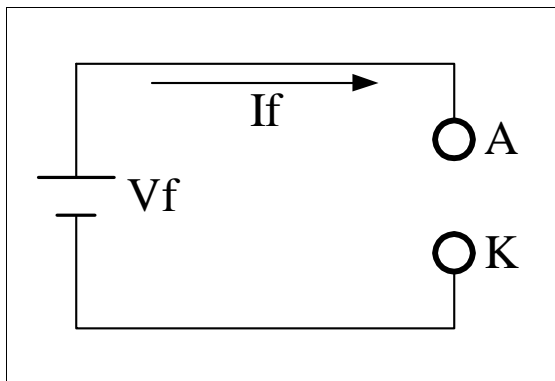


◆ Electro/Optical Characteristics(at Ta=25°C)

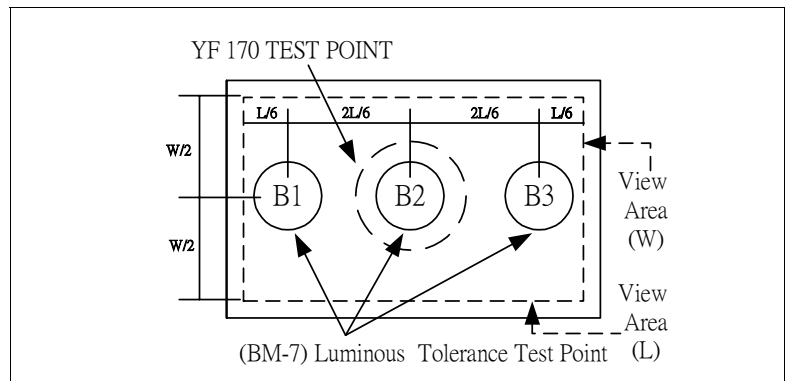
Parameter	Symbol	Test Condition	Rating			Unit	Remark
			Min	Typ	Max		
Forward Voltage	Vf	If=30mA	2.9	3.0	3.3	V	★1
Luminous Intensity	Iv	If=40mA	90	110		cd/m <sup>2</sup>	★2
Luminous Uniformity	-	If=40mA	80	85		%	★2,★3
Emission Wavelength	λd	If=40mA	465		470	nm	
Spectral Line Half Width	Δλ	If=40mA	-	26	-	nm	
Chromaticity Coordinates	X	If=40mA	-	-	-	-	
	Y		-	-	-		

Remark

★1. Testing Method



★2. Measured Method



(1) The test equipment is "TOPCON"BM-7 . Field (θ)  $\square = 2^\circ$   $\surd 1^\circ = \square 2^\circ$

(2)The "TOPCON"BM-7 test position of luminous intensity is B1~B3.

★3. The "TOPCON"BM-7 test

Position of luminous Uniformity =  $\left[ 1 - \frac{B(\text{MAX}) - B(\text{MIN})}{B(\text{MAX})} \right] \times 100\%$

( 附表一 )

電性、輝度量測表

The test equipment is LUX Meter	The test equipment is “TOPCON”BM-7
	<p style="text-align: center;">(BM-7) Luminous Tolerance Test Point (L)</p>

TEST CONDITIONS : Vf = V , If = mA Ta=25°C

(1) The test equipment is “TOPCON”BM-7 Field (θ) =1° =0.2° =0.1°

NO	VF	If (mA)	LUX	Location(CD/m <sup>2</sup> )						AVG	Uniormity (%)
				B1	B2	B3	B4	B5	B6		
1	2.96	40		117	112	116				115.0	95.7
2	2.99	40		121	116	121				119.3	95.9
3	2.98	40		120	112	113				115.0	93.3
4	2.96	40		109	101	101				103.7	92.7
5	2.98	40		113	105	107				108.3	92.9

缺點合計： 0 次缺點合計： 0 結果判定：  合格  不合格

( 附表二 )

色度座標量測表

(2) Color Coordinate: TOPCON BM-7 , Field (θ) =1° =0.2° =0.1°

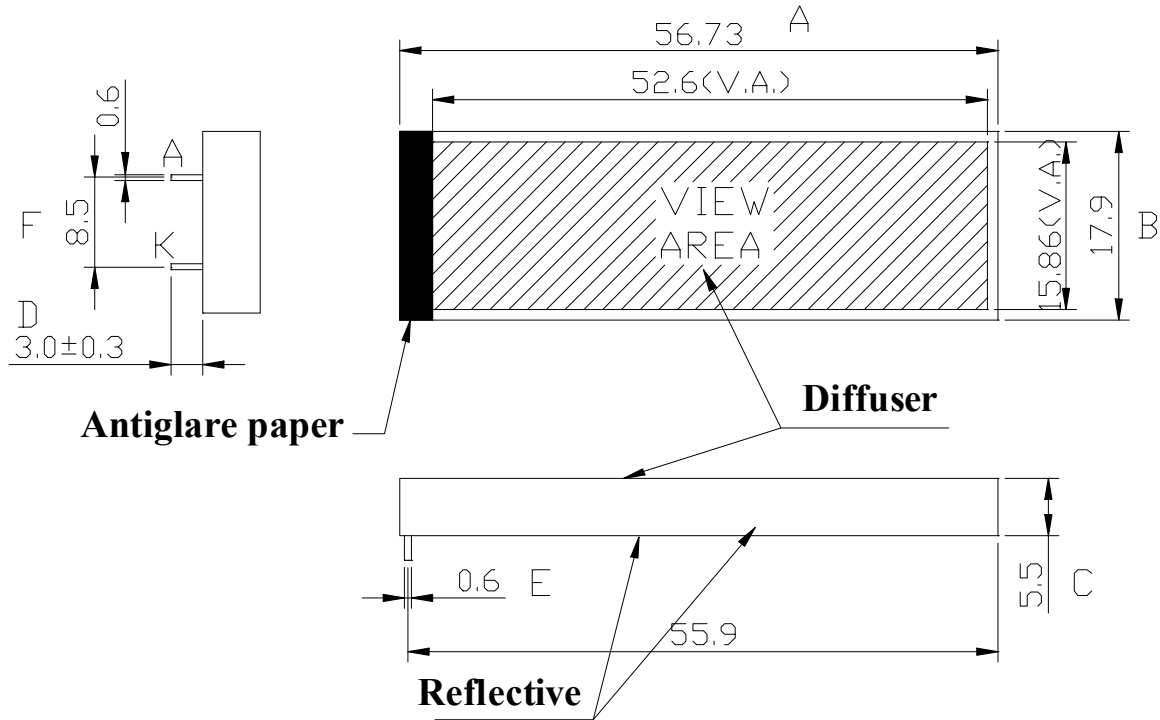
Location(X/Y)						
NO	1	2	3	4	5	AVG
X	-	-	-	-	-	-
Y	-	-	-	-	-	-

主缺點合計： - 次缺點合計： - 結果判定： 合格  不合格

( 附表三 )

外觀尺寸量測記錄表

TC = 25°C



NIT : (mm)	Part NO :					
Specification	NO	1	2	3	4	5
56.73±0.2	A	56.82	56.81	56.87	56.84	56.87
17.9±0.2	B	17.99	18.00	18.05	17.99	18.03
5.5±0.2	C	5.61	5.61	5.60	5.59	5.59
3.0±0.2	D	3.05	3.12	3.08	3.15	3.10
0.6±0.2	E	0.63	0.58	0.57	0.58	0.62
8.5±0.2	F	8.47	8.53	8.50	8.53	8.43
	G					
	H					
	I					
	J					
	K					
	L					
	M					
	N					

主缺點合計： 0 次缺點合計： 0

結果判定：  合格  不合格

◆ Package methods:

During shipment and storage , the methods must not affect the product's quality ◦

- Inner package:  Antistatic sponge       PVC Box
- Outer package: Hard paper box ◦

