



LEDTECH ELECTRONICS CORP.

NANYA ROAD, MUGANG ZHAOQING
CITY GUANGDONG CHINA.

TEL: 86-758-2875541, 2870651, 2877464, 2876185, 2877017

FAX: 86-758-2878014

[Http://www.ledtech.com.tw](http://www.ledtech.com.tw)

SPECIFICATION

PART NO. : LP1023-UR96-S13

LED BACKLIGHT



Approved by

Checked by

Prepared by

DUNG

史育悅

吳潔純

**LP1023-UR96-S13****LED BACKLIGHT****Description**

| Part No. | LED Chip | |
|-----------------|--------------|----------------|
| | Material | Emitting Color |
| LP1023-UR96-S13 | InGaAlP/GaAs | Yellow Green |

Absolute Maximum Rating at Ta=25°C

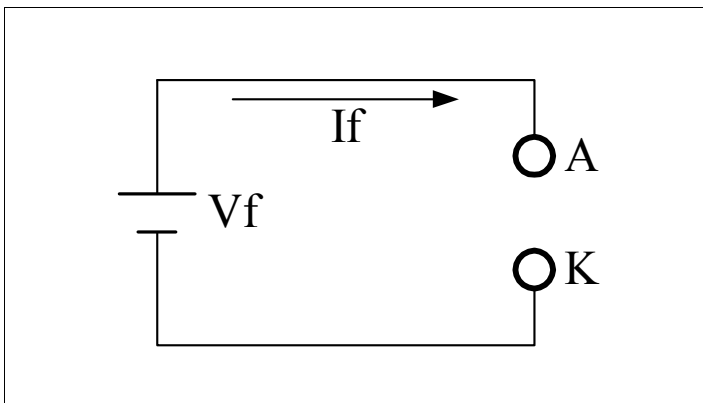
| Parameter | Symbol | Rating | Unit |
|--|--------|-----------------|------|
| Power Dissipation | PD | 48 | mW |
| Pulse Current(1/10Duty Cycle,0.1ms Pulse Width.) | IFP | 100 | mA |
| Forward Current | IF | 20 | mA |
| Reverse (Leakage)Current | Ir | 10 | uA |
| Reverse Voltage | VR | 9 | V |
| Operating Temperature Range | Topr. | -20 to +70 | °C |
| Storage Temperature Range | Tstg. | -30 to +80 | °C |
| Soldering Iron Temp.(1.6mm from seating plane) | | 350 for 3s MAX. | °C |

Electrical and Optical Characteristics:

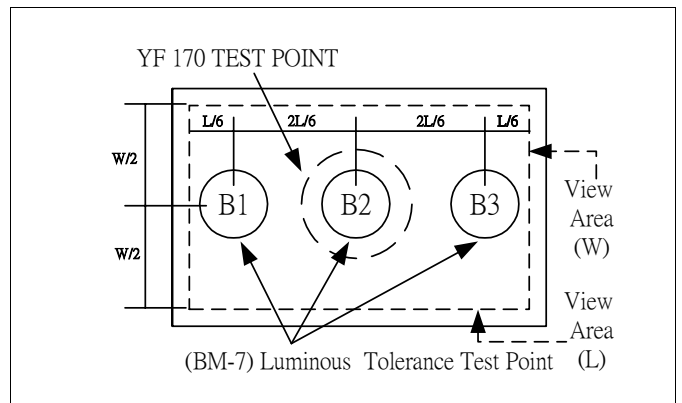
| Parameter | Symbol | Condition | Min. | Typ. | Max. | Unit |
|--|-----------------|------------------|------|------|------|-------------------|
| Luminous Intensity | Iv | If=20mA | 15 | 20 | - | cd/m ² |
| Forward Voltage | Vf | If=20mA | - | 2.1 | 2.4 | V |
| Luminous Uniformity | - | If=20mA | 70 | - | - | % |
| Dominant Wavelength | λ_D | If=20mA/per chip | 568 | 570 | 572 | nm |
| Reverse Current Per Chip (Leakage Current Per Chip) | Ir | Vr=9V | - | - | 10 | μ A |
| Spectrum Line Halfwidth | $\Delta\lambda$ | If=20mA/per chip | - | 30 | - | nm |

Remark

★1. Testing Method



★2. Measured Method



(1) The test equipment is "TOPCON"BM-7 . Field (θ)

=2° =1° =0.2°

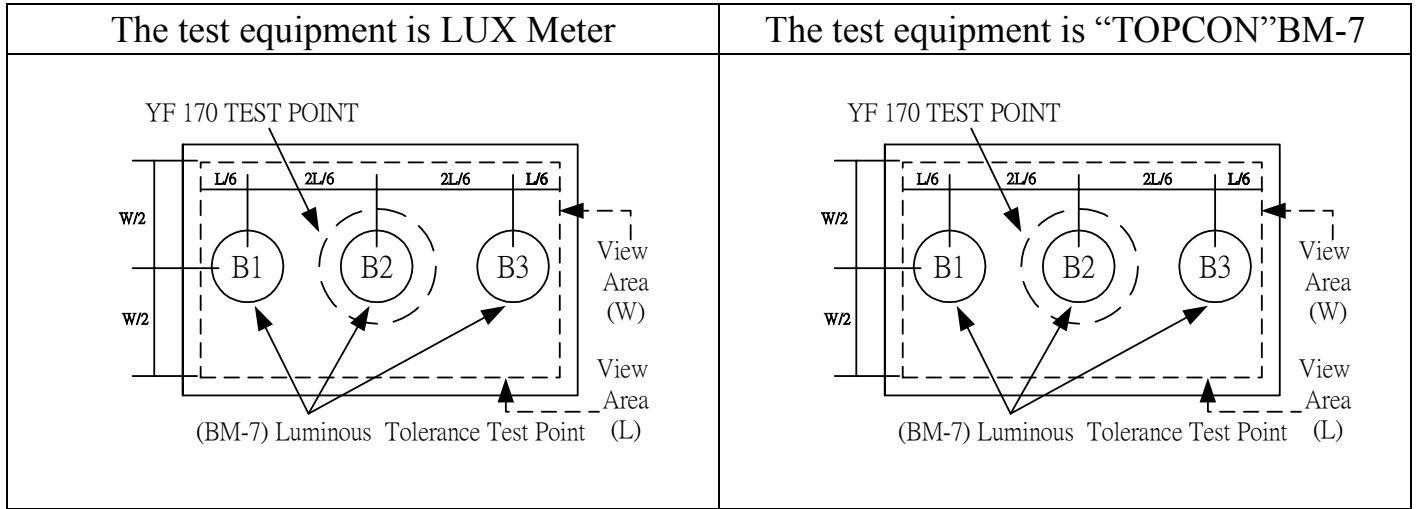
(2)The "TOPCON"BM-7 test position of luminous intensity is B1~B3.

★3. The "TOPCON"BM-7 test

Position of luminous Uniformity = $\frac{B(\text{MIN.})}{B(\text{MAX.})} \times 100\%$

(附表一)

電性、輝度量測表



TEST CONDITIONS : $V_{in} = 2.4V$, $I_f = 20\text{ mA}$ $T_a = 25^\circ\text{C}$

(1) The test equipment is "TOPCON"BM-7 Field (θ) =1° =0.2° =0.1

| NO | VF | If (mA) | Location(CD/m ²) | | | | | | AVG | Uniormity (%) |
|----|------|---------|------------------------------|----|----|----|----|----|-----|---------------|
| | | | B1 | B2 | B3 | B4 | B5 | B6 | | |
| 1 | 2.04 | 20 | 27 | 30 | 35 | - | - | - | 31 | 77 |
| 2 | 2.05 | 20 | 27 | 32 | 38 | - | - | - | 32 | 71 |
| 3 | 2.04 | 20 | 28 | 33 | 40 | - | - | - | 34 | 70 |
| 4 | 2.04 | 20 | 39 | 29 | 40 | - | - | - | 33 | 73 |
| 5 | 2.04 | 20 | 29 | 31 | 40 | - | - | - | 33 | 73 |

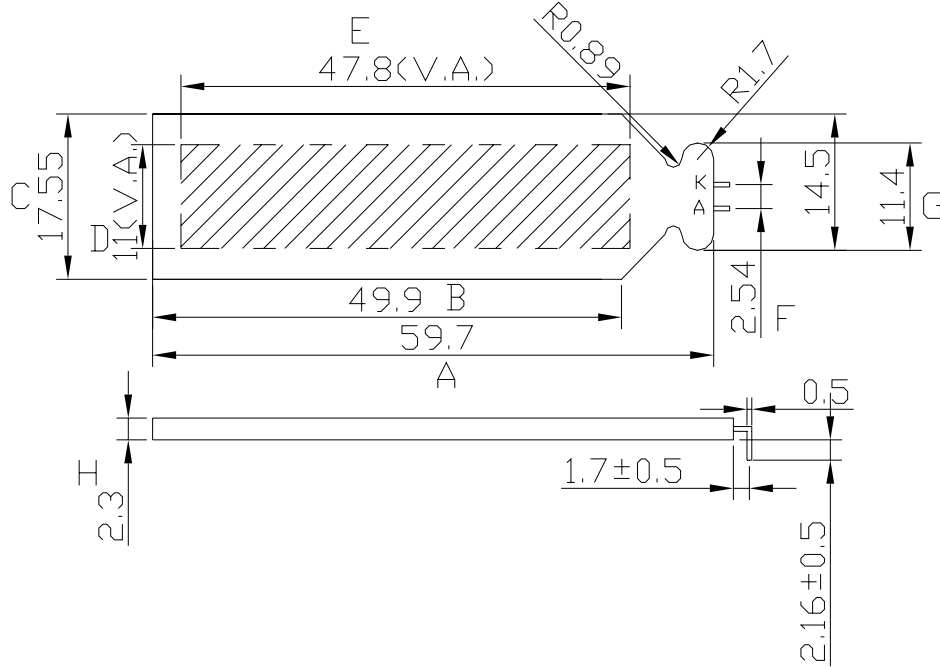
主缺點合計： 0 次缺點合計： 0

結果判定： 合格 不合格

(附表二)

外觀尺寸量測記錄表

TC = 25°C



| NIT : (mm) | | | | | | |
|---------------|----|-------|-------|-------|-------|-------|
| Specification | NO | 1 | 2 | 3 | 4 | 5 |
| 59.7 ±0.3 | A | 59.66 | 59.78 | 59.75 | 59.64 | 59.67 |
| 49.9 ±0.3 | B | 50.01 | 50.04 | 50.07 | 49.85 | 49.82 |
| 17.55 ±0.3 | C | 17.57 | 17.50 | 17.46 | 17.61 | 17.63 |
| 11 ±0.3 | D | 10.85 | 11.03 | 11.05 | 11.08 | 10.91 |
| 47.8 ±0.3 | E | 47.82 | 47.85 | 47.74 | 47.72 | 47.70 |
| 2.54 ±0.3 | F | 2.60 | 2.56 | 2.61 | 2.54 | 2.57 |
| 11.4 ±0.3 | G | 11.50 | 11.36 | 11.38 | 11.45 | 11.49 |
| 2.3 ±0.3 | H | 2.26 | 2.30 | 2.31 | 2.35 | 2.33 |
| | | | | | | |
| | | | | | | |
| | | | | | | |
| | | | | | | |
| | | | | | | |

主缺點合計： 0 次缺點合計： 0 結果判定： 合格 不合格