



LEDTECH ELECTRONICS CORP.

NANYA ROAD, MUGANG ZHAOQING
CITY GUANGDONG CHINA.

TEL: 86-758-2875541, 2870651, 2877464, 2876185, 2877017

FAX: 86-758-2878014

[Http://www.ledtech.com.tw](http://www.ledtech.com.tw)

SPECIFICATION

PART NO. : LY11GS-G
LED BACKLIGHT



Approved by

Checked by

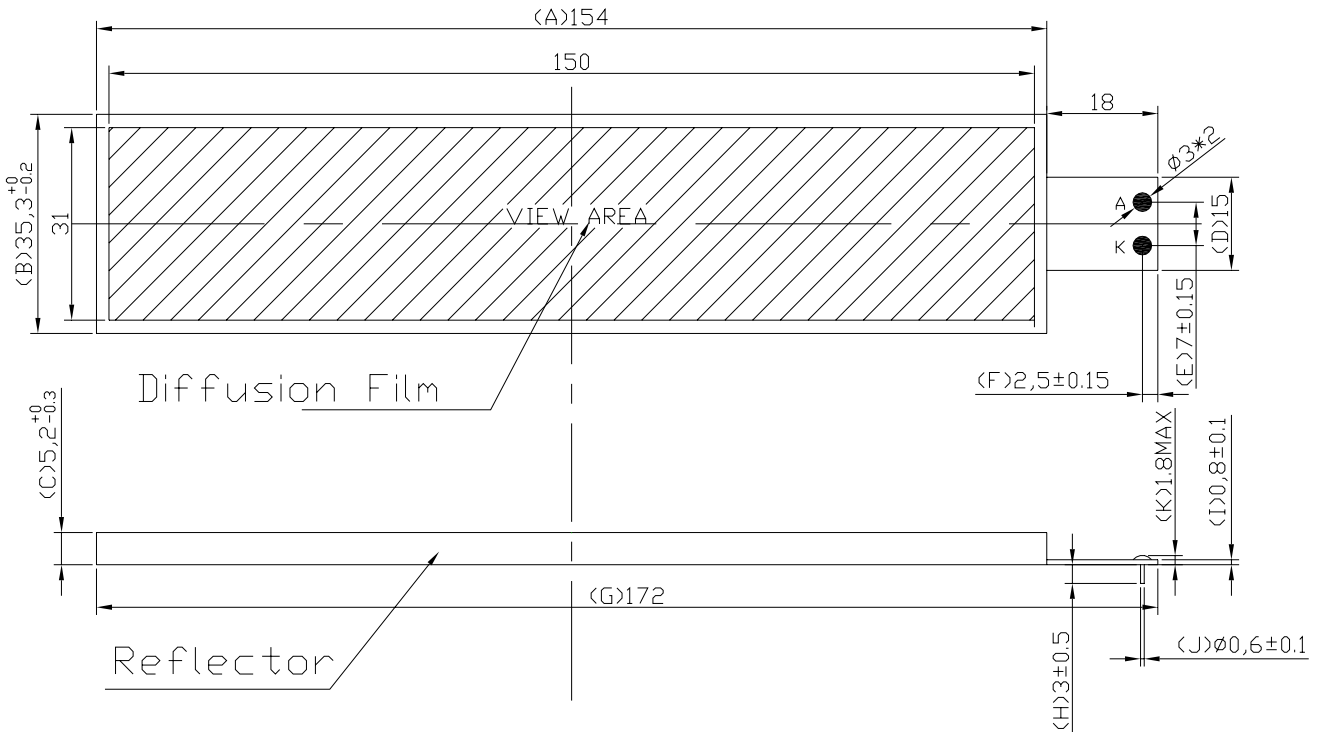
Prepared by

SAM

SUNNY

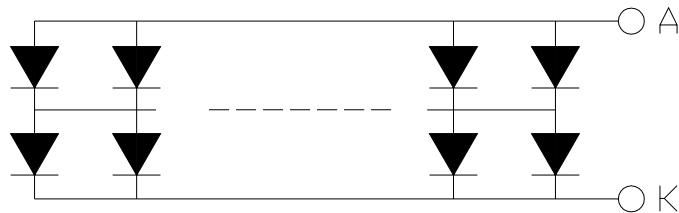
JUAN

Dimensions



1. All dimensions are in millimeters..
2. Tolerance is ± 0.30 mm unless otherwise noted.

Internal Circuit Diagram



LED NUMBERS: 2X60=120
 A: ANODE / K: CATHODE

**LY11GS-G****LED BACKLIGHT****Description**

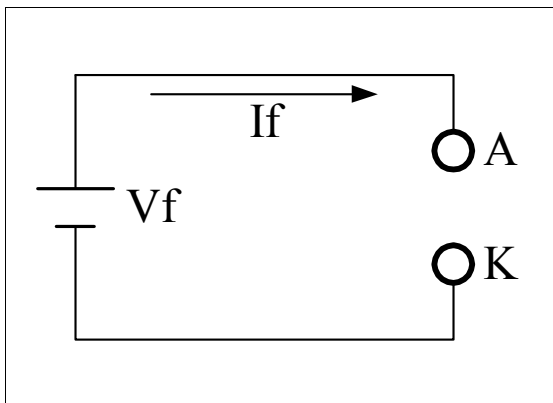
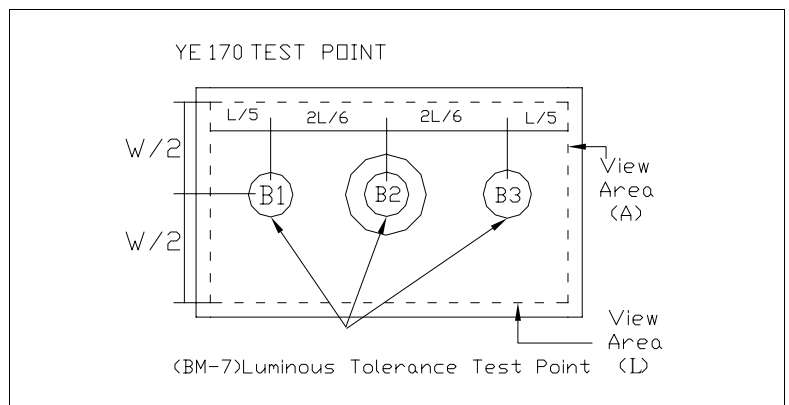
Part No.	LED Chip	
	Material	Emitting Color
LY11GS-G	GaP/GaP	Yellow Green

Absolute Maximum Ratings at Ta=25 °C

Parameter	Symbol	Rating	Unit
Power Dissipation	PD	6	W
Pulse Current(1/10Duty Cycle,0.1ms Pulse Width.)	IFP	100	mA
Forward Current	IF	1.2	A
Reverse (Leakage)Current	Ir	6	mA
Reverse Voltage	VR	10	V
Operating Temperature Range	Topr.	-20 to +70	°C
Storage Temperature Range	Tstg.	-30 to +80	°C
Lead Soldering Temp.(1.6mm from seating plane)		320 for 3s MAX.	°C

Electrical and Optical Characteristics:

Parameter	Symbol	Condition	Min.	Typ.	Max.	Unit
Luminous Intensity	Iv	If=600mA	200	250	380	cd/m ²
Forward Voltage	Vf	If=600mA	3.6	4.2	5	V
Luminous Tolerance	-	If=600mA	70	-	-	%
Peak Wavelength	λP	If=20mA/per chip	567	570	573	nm
Spectrum Line Halfwidth	Δλ	If=20mA/per chip	-	30	-	nm
Reverse Current Per Chip (Leakage Current Per Chip)	Ir	Vr=10V	-	-	6	mA
Chromaticity Coordinates	x	If=600mA	0.40	0.43	0.46	
	y		0.51	0.53	0.56	

Remark
★1. Testing Method

★2. Measured Method


(1) The test equipment is "TOPCON"BM-7 . Field (θ) $\square = 2^\circ$ $\square = 1^\circ$ $\square = 0.2^\circ$

(2)The "TOPCON"BM-7 test position of luminous intensity is B1~B3.

★3. The "TOPCON"BM-7 test

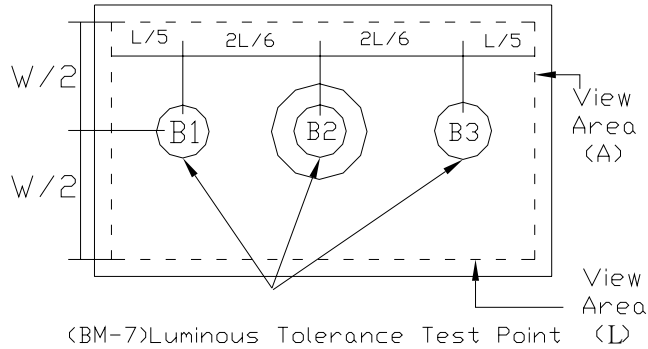
Position of luminous Uniformity =
$$\frac{B(\text{MIN})}{B(\text{MAX})} \times 100\%$$

(附表一)

電性、輝度量測表

The test equipment is "TOPCON"BM-7

YE 170 TEST POINT



(1) The test equipment is "TOPCON"BM-7 Field (θ) =1° =0.2° =0.1

NO	If (mA)	VF (V)	Location(CD/m ²)						AVG	Uniormity (%)
			B1	B2	B3	B4	B5	B6		
1	600	4.24	177	188	167				177.3	89
2	600	4.27	249	245	213				235.7	86
3	600	4.23	188	178	165				177.0	88
4	600	4.28	190	199	196				195.0	95
5	600	4.25	277	290	273				280	94

缺點合計： 0 次缺點合計： 0 結果判定： 合格 不合格

(附表二)

色度座標量測表

(2) Color Coordinate: TOPCON BM-7, Field (θ) =1° =0.2° =0.1°

Location(X/Y)						
NO	1	2	3	4	5	AVG
X	0.4392	0.4328	0.4336	0.4346	0.4350	0.4354
Y	0.5564	0.5583	0.5600	0.5600	0.5600	0.5592

主缺點合計： 0 次缺點合計： 0 結果判定： 合格 不合格