



LEDTECH ELECTRONICS CORP.

NANYA ROAD, MUGANG ZHAOQING
CITY GUANGDONG CHINA.

TEL: 86-758-2875541, 2870651, 2877464, 2876185, 2877017

FAX: 86-758-2878014

[Http://www.ledtech.com.tw](http://www.ledtech.com.tw)

SPECIFICATION

PART NO. : LY11GT-G
LED BACKLIGHT



Approved by

Checked by

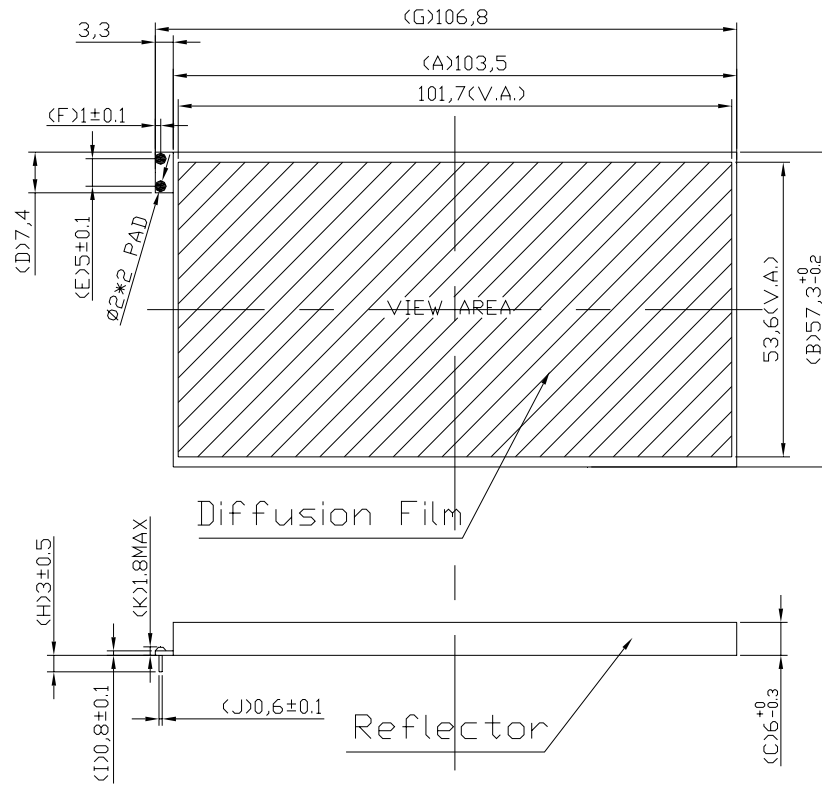
Prepared by

SAM

SUNNY

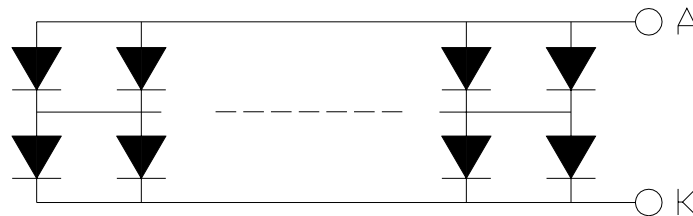
JUAN

Dimensions



1. All dimensions are in millimeters..
2. Tolerance is ±0.30mm unless otherwise noted.

Internal Circuit Diagram



LED NUMBERS: 2X64=128
 A: ANODE / K: CATHODE

**LY11GT-G****LED BACKLIGHT****Description**

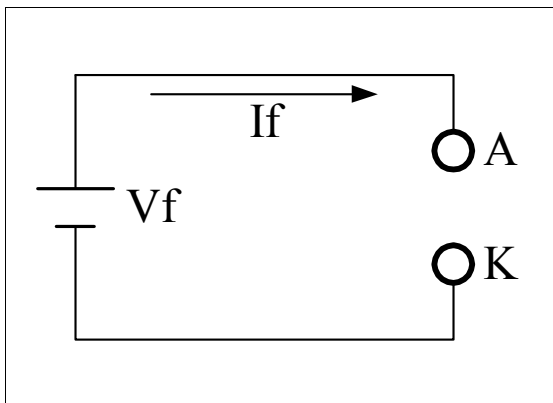
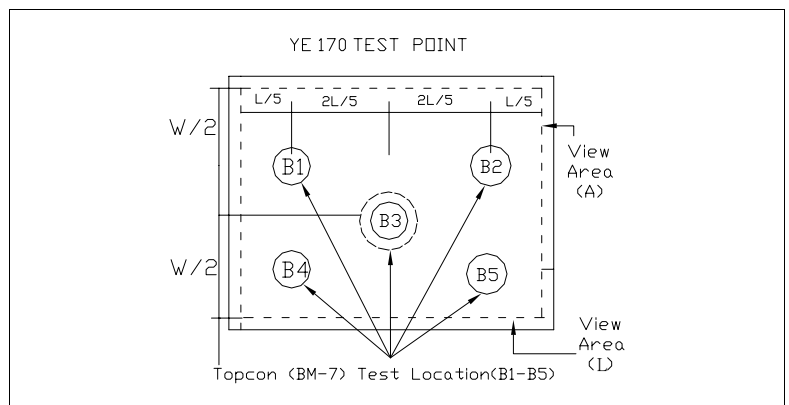
Part No.	LED Chip	
	Material	Emitting Color
LY11GT-G	GaP/GaP	Yellow Green

Absolute Maximum Ratings at Ta=25 °C

Parameter	Symbol	Rating	Unit
Power Dissipation	PD	6.4	W
Pulse Current(1/10Duty Cycle,0.1ms Pulse Width.)	IFP	100	mA
Forward Current	IF	1280	mA
Reverse (Leakage)Current	Ir	6.4	mA
Reverse Voltage	VR	10	V
Operating Temperature Range	Topr.	-20 to +70	°C
Storage Temperature Range	Tstg.	-30 to +80	°C
Lead Soldering Temp.(1.6mm from seating plane)		320 for 3s MAX	°C

Electrical and Optical Characteristics:

Parameter	Symbol	Condition	Min.	Typ.	Max.	Unit
Luminous Intensity	Iv	If=640mA	150	220	320	cd/m ²
Forward Voltage	Vf	If=640mA	3.6	4.2	5	V
Luminous Tolerance	-	If=640mA	75	-	-	%
Peak Wavelength	λP	If=20mA/per chip	567	570	573	nm
Spectrum Line Halfwidth	Δλ	If=20mA/per chip	-	30	-	nm
Reverse Current Per chip (Leakage Current Per Chip)	Ir	Vr=10V	-	-	6.4	mA
Chromaticity Coordinates	x	If=640mA	0.40	0.43	0.46	
	y		0.51	0.53	0.56	

Remark
★1. Testing Method

★2. Measured Method


(1) The test equipment is "TOPCON"BM-7 . Field (θ) $\square = 2^\circ$ $\square = 1^\circ$ $\square = 0.2^\circ$

(2)The "TOPCON"BM-7 test position of luminous intensity is B1~B5

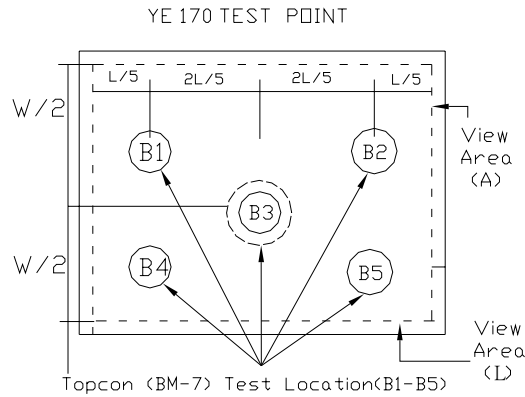
★3. The "TOPCON"BM-7 test

$$\text{Position of luminous Uniformity} = \frac{B(\text{MIN})}{B(\text{MAX})} \times 100\%$$

(附表一)

電性、輝度量測表

The test equipment is “TOPCON”BM-7



(1) The test equipment is “TOPCON”BM-7 Field (θ) =1° =0.2° =0.1

NO	If (mA)	VF (V)	Location(CD/m ²)						AVG	Uniormity (%)
			B1	B2	B3	B4	B5	B6		
1	640	4.14	189	175	232	210	203	201.8	75	
2	640	4.09	188	190	220	194	184	195.2	84	
3	640	4.16	178	187	239	189	190	196.6	75	
4	640	4.13	213	216	258	223	215	225.0	83	
5	640	4.15	181	182	239	204	198	201.2	76	

缺點合計： 0 次缺點合計： 0 結果判定： 合格 不合格

(附表二)

色度座標量測表

(2) Color Coordinate: TOPCON BM-7, Field (θ) =1° =0.2° =0.1°

Location(X/Y)						
NO	1	2	3	4	5	AVG
X	0.4348	0.4340	0.4345	0.4340	0.4351	0.4345
Y	0.5556	0.5599	0.5600	0.5598	0.5600	0.5597

主缺點合計： 0 次缺點合計： 0 結果判定： 合格 不合格