



LEDTECH ELECTRONICS CORP.

NANYA ROAD, MUGANG ZHAOQING
CITY GUANGDONG CHINA.

TEL: 86-758-2875541, 2870651, 2877464, 2876185, 2877017

FAX: 86-758-2878014

[Http://www.ledtech.com.tw](http://www.ledtech.com.tw)

SPECIFICATION

PART NO. : LY11H1-G
LED BACKLIGHT



Approved by

Checked by

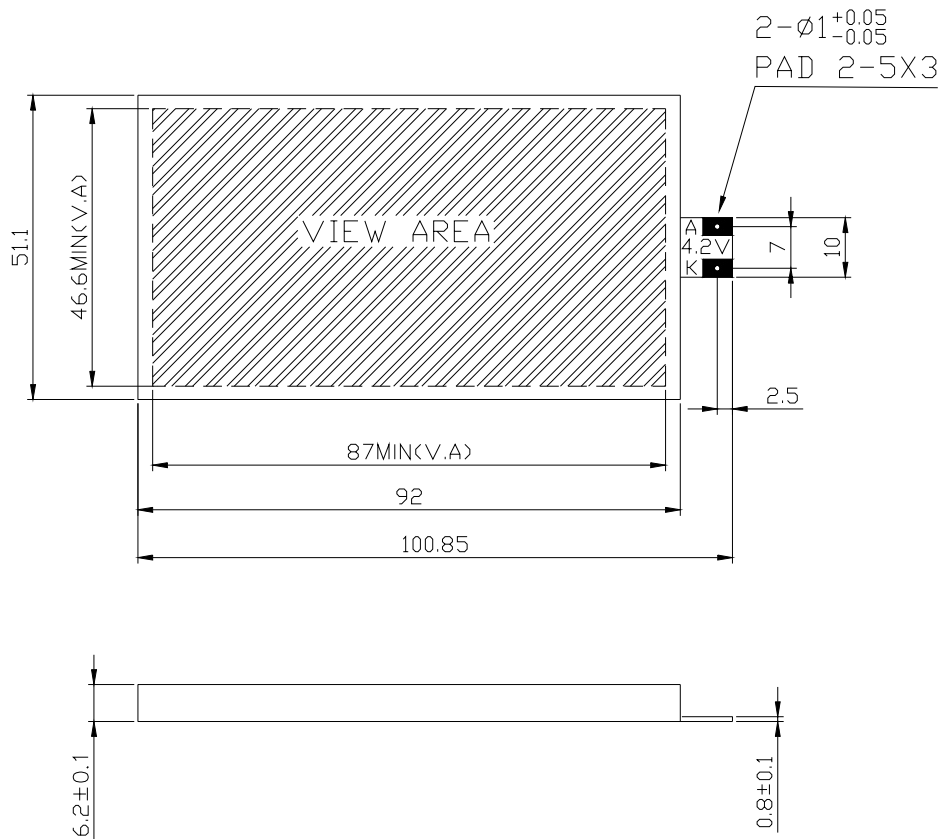
Prepared by

SAM

SUNNY

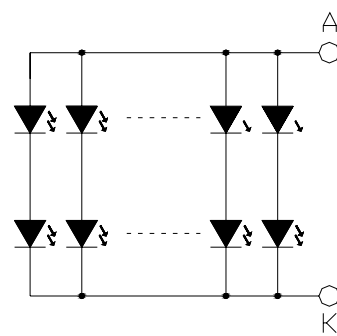
LEI

Dimensions



1. All dimensions are in millimeters..
2. Tolerance is ±0.25mm unless otherwise noted.

Internal Circuit Diagram



A:ANODE K:CATHODE
LED NUMBERS: 2X60=120



LY11H1-G

LED BACKLIGHT

Description

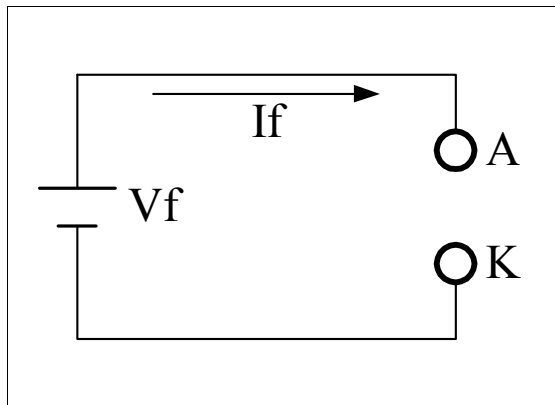
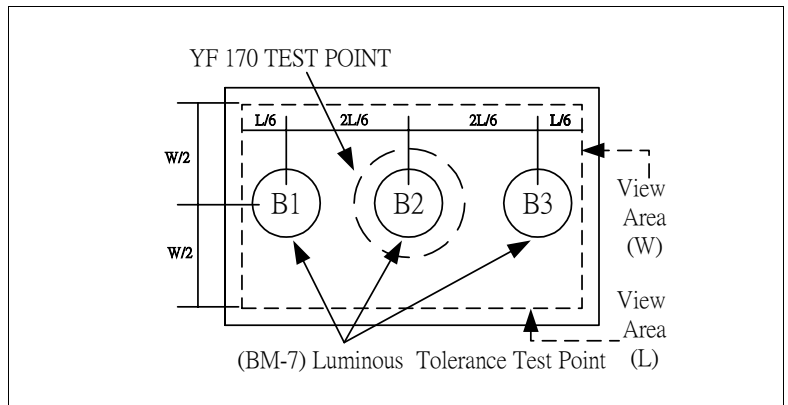
Part No.	LED Chip	
	Material	Emitting Color
LY11H1-G	GaP/GaP	Yellow Green

Absolute Maximum Ratings at Ta=25 °C

Parameter	Symbol	Rating	Unit
Power Dissipation	PD	5.76	W
Pulse Current(1/10Duty Cycle,0.1ms Pulse Width.)	IFP	100	mA
Forward Current	IF	1200	mA
Reverse (Leakage)Current	Ir	600	uA
Reverse Voltage	VR	10	V
Operating Temperature Range	Topr.	-20 to +70	°C
Storage Temperature Range	Tstg.	-30 to +80	°C
Soldering Iron Temp.(1.6mm from seating plane)		350 for 3s MAX.	°C

Electrical and Optical Characteristics:

Parameter	Symbol	Condition	Min.	Typ.	Max.	Unit
Luminous Intensity	Iv	IF=600mA	140	260	-	cd/m ²
Forward Voltage	Vf	IF=600mA	3.8	4.2	4.8	V
Luminous Uniformity		IF=600mA	80	-	-	%
Dominant Wavelength	λ_d	IF=20mA/per chip	570	573	575	nm
Reverse Current Per Chip (Leakage Current Per Chip)	Ir	Vr=5V	-	-	10	μ A
Spectrum Line Halfwidth	$\Delta\lambda$	IF=20mA/per chip	-	30	-	nm

Remarkc
★1. Testing Method

★2. Measured Method


(1) The test equipment is "TOPCON"BM-7 . Field (θ)

=2° V =1° =0.2°

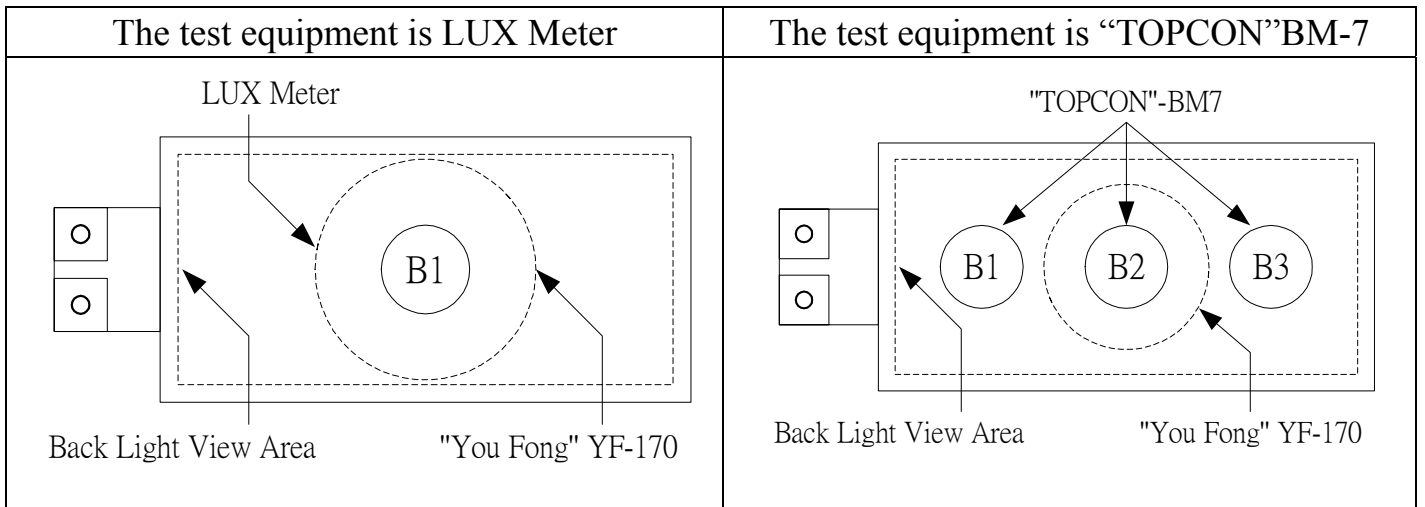
(2)The "TOPCON"BM-7 test position of luminous intensity is B1~B3.

★3. The "TOPCON"BM-7 test

$$\text{Position of luminous Uniformity} = \frac{B(\text{MIN.})}{B(\text{MAX.})} \times 100\%$$

(附表一)

電性、輝度量測表



TEST CONDITIONS : $V_{in} = 4.2V$, $I_f = 600\text{ mA}$ $T_a = 25^\circ\text{C}$

(1) The test equipment is "TOPCON"BM-7 Field (θ) =1° =0.2° =0.1

NO	VF	If (mA)	LUX	Location(CD/m ²)						AVG	Uniornity (%)
				B1	B2	B3	B4	B5	B6		
1	4.16	600		202	220	201	-	-	-	208	91
2	4.14	600		213	232	220	-	-	-	222	91
3	4.14	600		209	235	216	-	-	-	220	89
4	4.15	600		217	241	209	-	-	-	222	87
5	4.16	600		206	232	211	-	-	-	216	89

缺點合計： 0

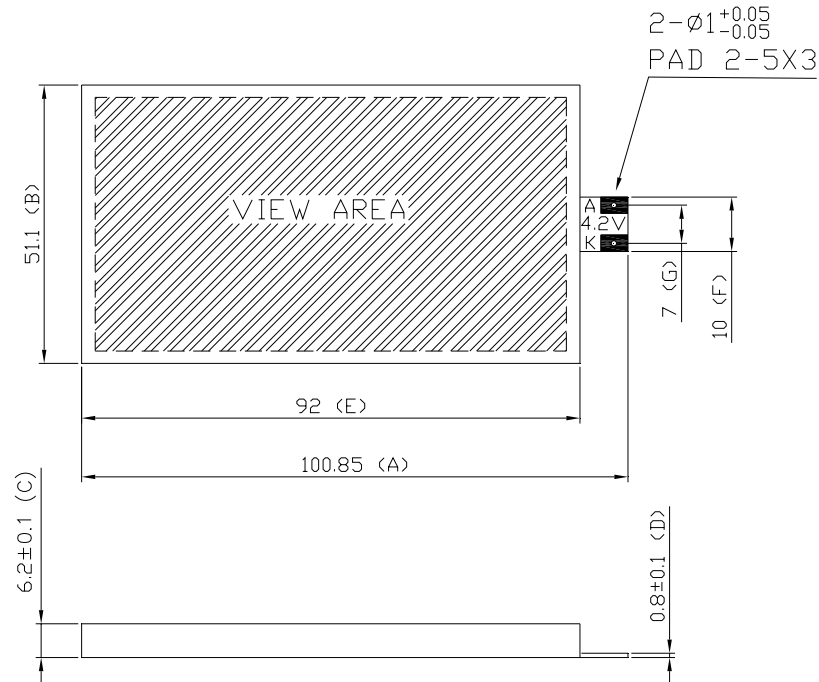
次缺點合計： 0

結果判定： 合格 不合格

(附表二)

外觀尺寸量測記錄表

TC = 25°C



NIT : (mm)						
Specification	NO	1	2	3	4	5
100.85±0.3	A	100.86	100.81	100.84	100.87	100.86
51.1±0.3	B	51.04	51.02	51.01	51.03	51.03
6.2±0.1	C	6.15	6.13	6.14	6.12	6.16
0.8±0.1	D	0.83	0.86	0.84	0.82	0.85
92±0.3	E	91.83	91.81	91.85	91.84	91.85
10±0.3	F	10.09	10.06	10.05	10.07	10.08
7±0.1	G	7.03	7.05	7.02	7.01	7.05

主缺點合計： 0 次缺點合計： 0 結果判定： 合格 不合格