



LEDTECH ELECTRONICS CORP.

NANYA ROAD, MUGANG ZHAOQING
CITY GUANGDONG CHINA.

TEL: 86-758-2875541, 2870651, 2877464, 2876185, 2877017

FAX: 86-758-2878014

[Http://www.ledtech.com.tw](http://www.ledtech.com.tw)

SPECIFICATION

PART NO. : LY11BM-G

LED BACKLIGHT



Approved by

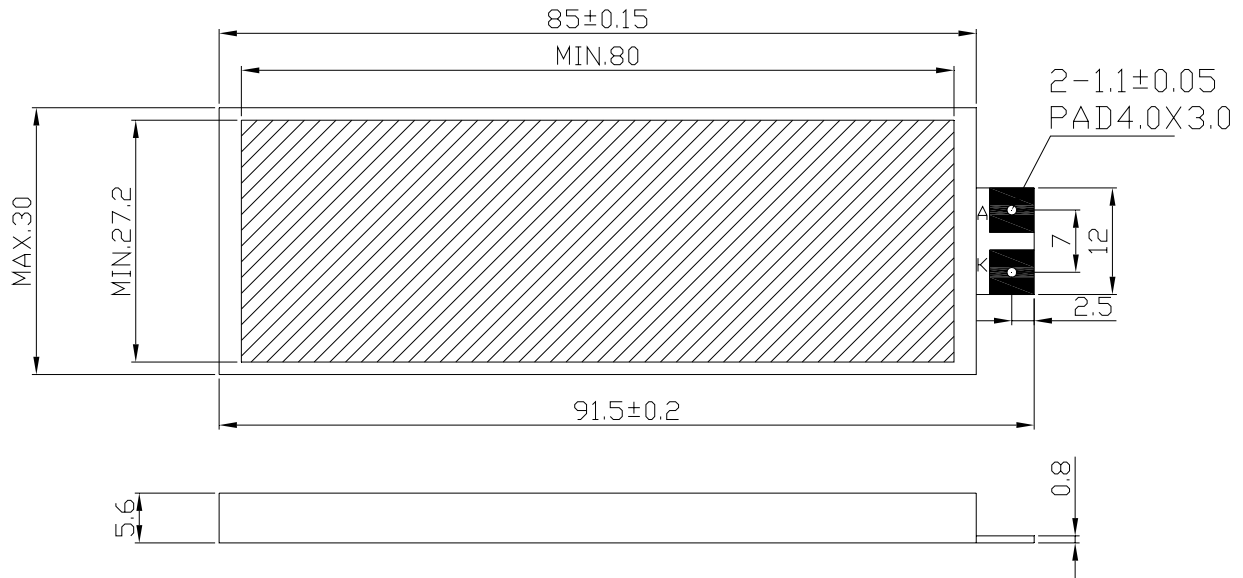
Checked by

Prepared by

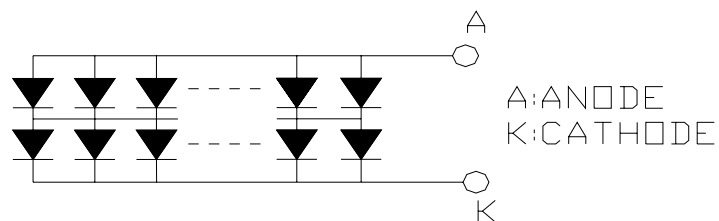
SAM

SUNNY

LEI

Dimensions

1. All dimensions are in millimeters.
2. Tolerance is $\pm 0.30\text{mm}$ unless otherwise noted.

Internal Circuit Diagram

LED NUMBERS: $28 \times 2 = 56$

**LY11BM-G****LED BACKLIGHT****Description**

Part No.	LED Chip	
	Material	Emitting Color
LY11BM-G	GaP/GaP	Yellow Green

Absolute Maximum Ratings at Ta=25 °C

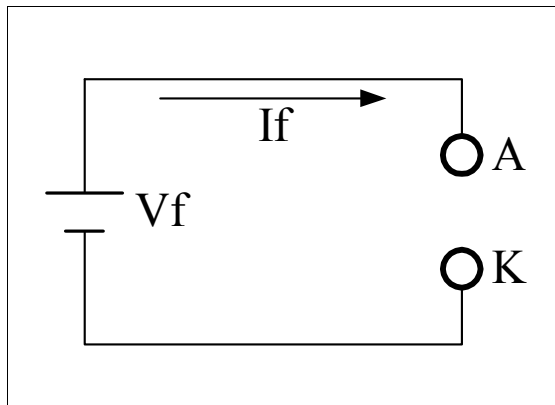
Parameter	Symbol	Rating	Unit
Power Dissipation	PD	2.688	W
Pulse Current(1/10Duty Cycle,0.1ms Pulse Width.)	IFP	100	mA
Forward Current	IF	560	mA
Reverse (Leakage)Current	Ir	280	uA
Reverse Voltage	VR	10	V
Operating Temperature Range	Topr.	-20 to +70	°C
Storage Temperature Range	Tstg.	-30 to +80	°C
Soldering Iron Temp.(1.6mm from seating plane)		350 for 3s MAX.	°C

Electrical and Optical Characteristics:

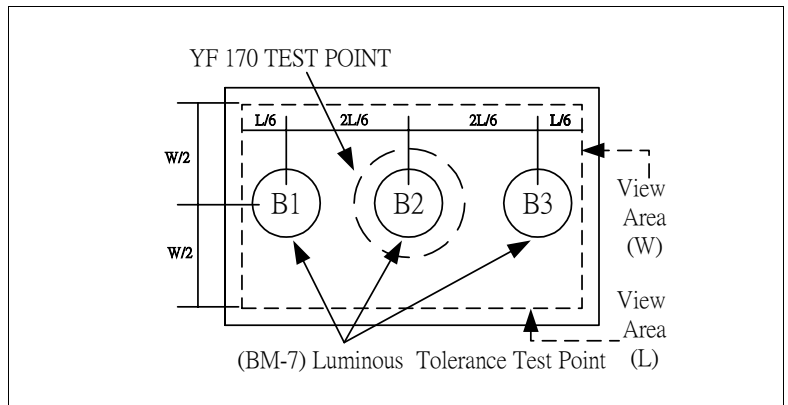
Parameter	Symbol	Condition	Min.	Typ.	Max.	Unit
Luminous Intensity	Iv	IF=280mA	230	275	-	cd/m ²
Forward Voltage	Vf	IF=280mA	-	4.2	4.8	V
Luminous Uniformity		IF=280mA	70	-	-	%
Dominant Wavelength	λd	IF=20mA/per chip	570	573	575	nm
Reverse Current Per Chip (Leakage Current Per Chip)	Ir	Vr=5V	-	-	10	μA
Spectrum Line Halfwidth	Δλ	IF=20mA/per chip	-	30	-	nm

Remark

★1. Testing Method



★2. Measured Method



(1) The test equipment is "TOPCON"BM-7 . Field (θ)

$$\square = 2^\circ \quad \square \text{ V} = 1^\circ \quad \square = 0.2^\circ$$

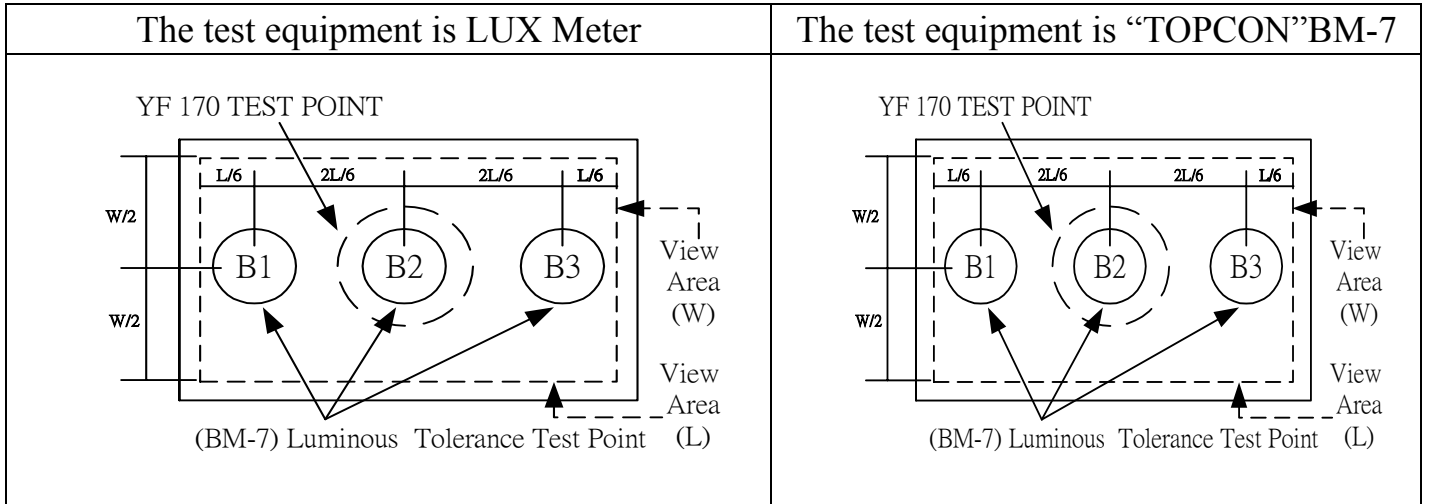
(2)The "TOPCON"BM-7 test position of luminous intensity is B1~B3.

★3. The "TOPCON"BM-7 test

Position of luminous Uniformity = $\frac{B(\text{MIN.})}{B(\text{MAX.})} \times 100\%$

(附表一)

電性、輝度量測表



TEST CONDITIONS : $V_{in} = 4.2V$, $I_f = 280\text{ mA}$ $T_a = 25^\circ\text{C}$

(1) The test equipment is "TOPCON"BM-7 Field (θ) =1° =0.2° =0.1

NO	VF	If (mA)	LUX	Location(CD/m ²)						AVG	Uniormity (%)
				B1	B2	B3	B4	B5	B6		
1	4.15	280		243	266	234	-	-	-	248	88
2	4.14	280		239	257	236	-	-	-	244	93
3	4.15	280		236	267	240	-	-	-	248	88
4	4.15	280		232	259	237	-	-	-	243	89
5	4.14	280		238	265	236	-	-	-	246	89

缺點合計： 0

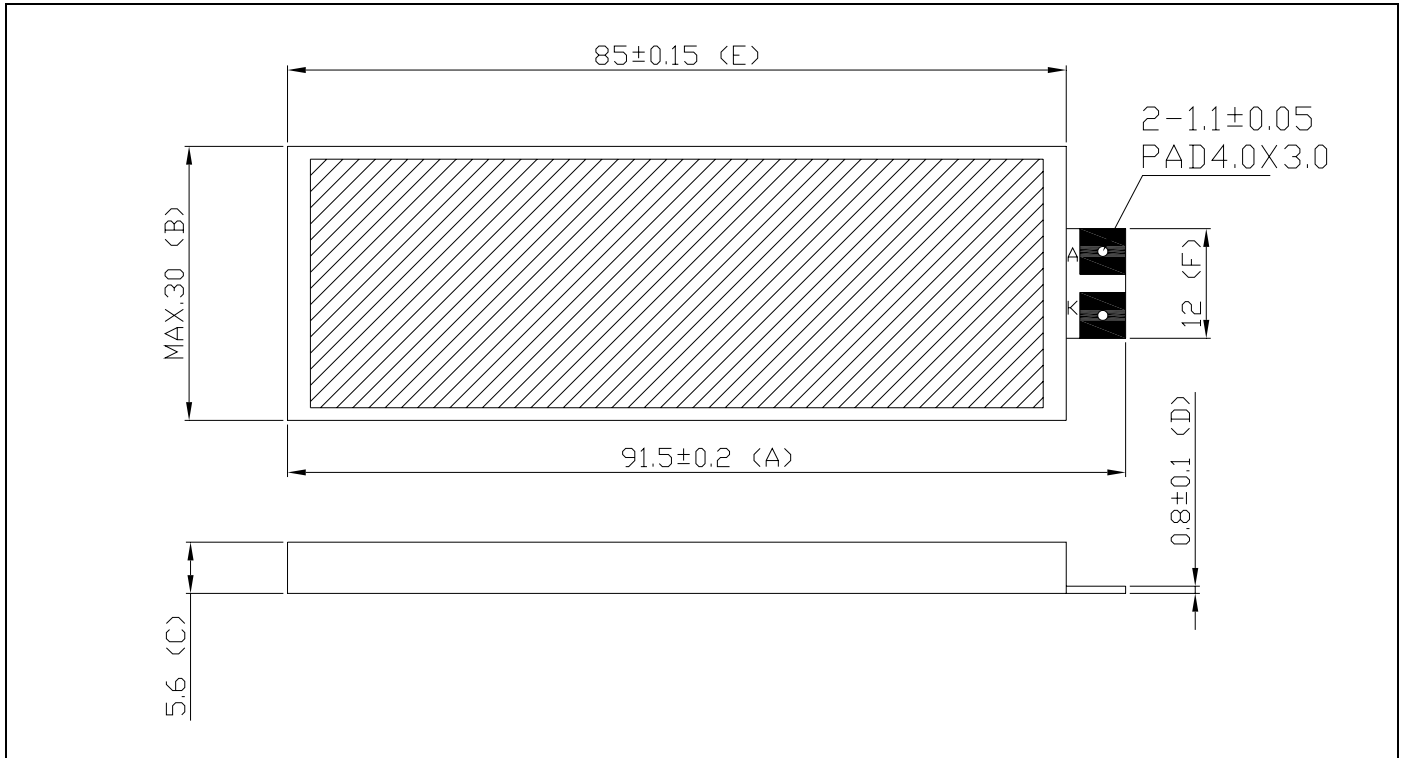
次缺點合計： 0

結果判定： 合格 不合格

(附表二)

外觀尺寸量測記錄表

TC = 25°C



NIT : (mm)						
Specification	NO	1	2	3	4	5
91.5±0.2	A	91.62	91.65	91.61	91.58	91.53
Max.30	B	29.84	29.81	29.86	29.81	29.81
5.6±0.3	C	5.71	5.71	5.72	5.73	5.69
0.8±0.1	D	0.88	0.86	0.87	0.86	0.88
85±0.15	E	85.03	85.01	85.02	85.05	85.09
12±0.3	F	12.05	12.09	12.04	12.06	12.05

主缺點合計： 0 次缺點合計： 0 結果判定： 合格 不合格