



LEDTECH ELECTRONICS CORP.

NANYA ROAD, MUGANG ZHAOQING
CITY GUANGDONG CHINA.

TEL: 86-758-2875541, 2870651, 2877464, 2876185, 2877017

FAX: 86-758-2878014

[Http://www.ledtech.com.tw](http://www.ledtech.com.tw)

SPECIFICATION

PART NO. : LY11GW-G
LED BACKLIGHT



Approved by

Checked by

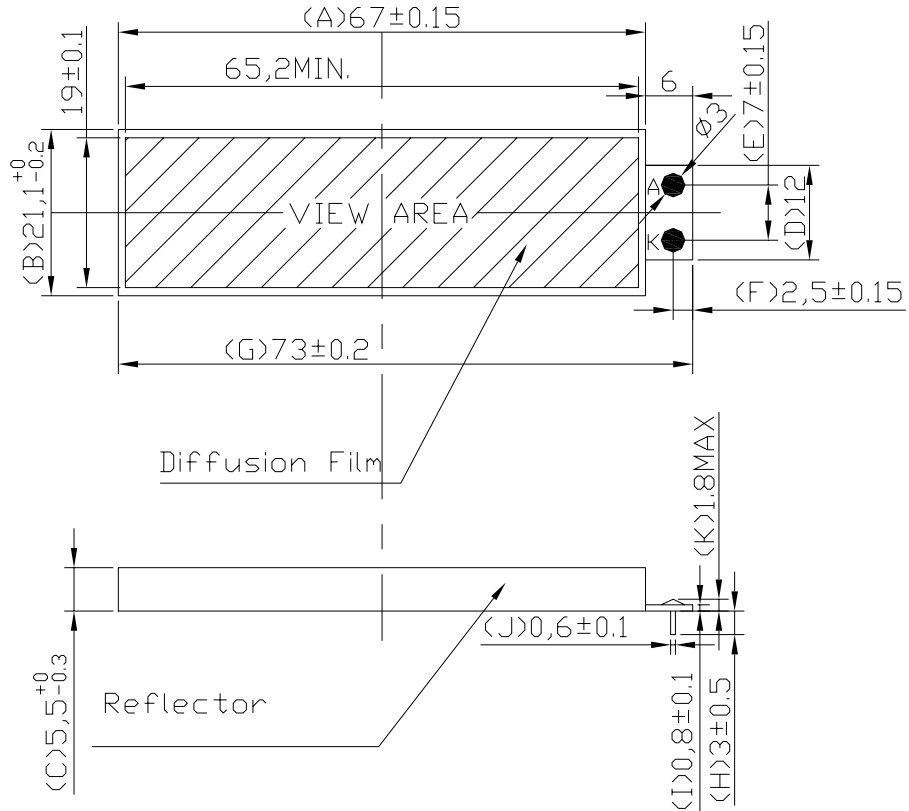
Prepared by

SAM

SUNNY

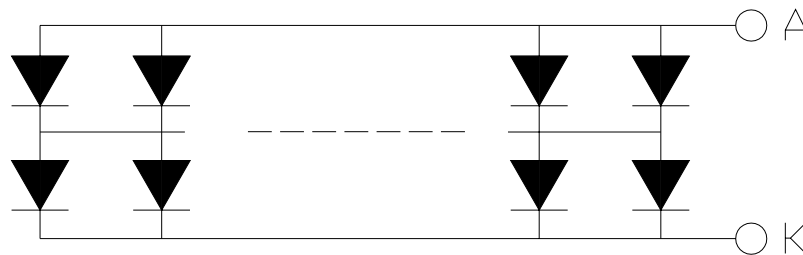
JUAN

Dimensions



1. All dimensions are in millimeters..
2. Tolerance is ± 0.30 mm unless otherwise noted.

Internal Circuit Diagram



LED NUMBERS: $2 \times 12 = 24$
 A: ANODE / K: CATHODE

**LY11GW-G****LED BACKLIGHT****Description**

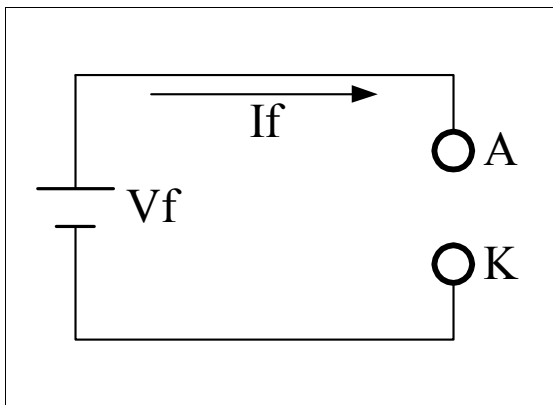
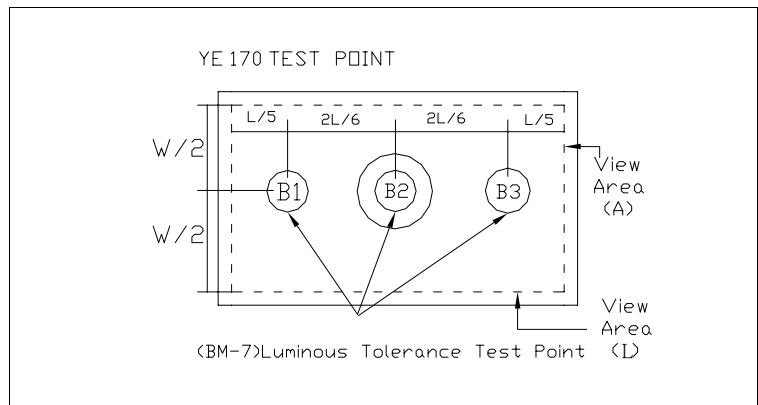
Part No.	LED Chip	
	Material	Emitting Color
LY11GW-G	GaP/GaP	Yellow Green

Absolute Maximum Ratings at Ta=25 °C

Parameter	Symbol	Rating	Unit
Power Dissipation	PD	0.85	W
Pulse Current(1/10Duty Cycle,0.1ms Pulse Width.)	IFP	100	mA
Forward Current	IF	300	mA
Reverse (Leakage)Current	Ir	0.2	mA
Reverse Voltage	VR	8	V
Operating Temperature Range	Topr.	-20 to +70	°C
Storage Temperature Range	Tstg.	-30 to +80	°C
Lead Soldering Temp.(1.6mm from seating plane)		320 for 3s MAX.	°C

Electrical and Optical Characteristics:

Parameter	Symbol	Condition	Min.	Typ.	Max.	Unit	Remark
Luminous Intensity	Iv	If=200mA	280	350	500		★1
Forward Voltage	Vf	If=200mA	3.6	4.2	4.6	V	★2
Luminous Tolerance	-	If=200mA	85	-	-	%	★2, ★3
Peak Wavelength	λP	If=20mA/per chip	570	573	575	nm	
Spectrum Line Halfwidth	$\Delta\lambda$	If=20mA/per chip	-	30	-	nm	
Reverse Current Per Chip (Leakage Current Per Chip)	Ir	Vr=8V	-	-	0.2	mA	
Chromaticity Coordinates	x	If=200mA	0.40	0.43	0.46		
	y		0.51	0.53	0.56		

Remark
★1. Testing Method

★2. Brightness Measured Point


(1) The test equipment is "TOPCON"BM-7 . Field (θ) =1°

(2)The "TOPCON"BM-7 test position of luminous intensity is B1~B3.

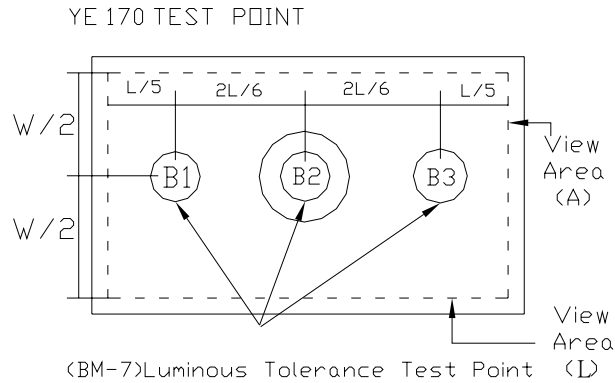
★3. The "TOPCON"BM-7 test

$$\text{Position of luminous Uniformity} = \frac{B(\text{MIN})}{B(\text{MAX})} \times 100\%$$

(附表一)

電性、輝度量測表

The test equipment is “TOPCON”BM-7



(1) The test equipment is “TOPCON”BM-7 Field (θ) =1° =0.2° =0.1

NO	If (mA)	VF (V)	Location(CD/m ²)						AVG	Uniormity (%)
			B1	B2	B3	B4	B5	B6		
1	200	4.34	346	373	353				357.0	96
2	200	4.34	350	360	356				355.3	96
3	200	4.33	319	328	318				321.7	95
4	200	4.35	373	405	345				474.3	85
5	200	4.34	369	386	356				370.3	92

缺點合計： 0 次缺點合計： 0 結果判定：合格 不合格

(附表二)

色度座標量測表

(2) Color Coordinate: TOPCON BM-7, Field (θ) =1° =0.2° =0.1°

Location(X/Y)						
NO	1	2	3	4	5	AVG
X	0.4344	0.4373	0.4356	0.4357	0.4373	0.4361
Y	0.5598	0.5583	0.5600	0.5600	0.5584	0.5596

主缺點合計： 0 次缺點合計： 0 結果判定：合格 不合格