



LEDTECH ELECTRONICS CORP.

NANYA ROAD, MUGANG ZHAOQING  
CITY GUANGDONG CHINA.

TEL: 86-758-2875541, 2870651, 2877464, 2876185, 2877017

FAX: 86-758-2878014

[Http://www.ledtech.com.tw](http://www.ledtech.com.tw)

# SPECIFICATION

*PART NO. : LY11BK-G*

*LED BACKLIGHT*



Approved by

Checked by

Prepared by

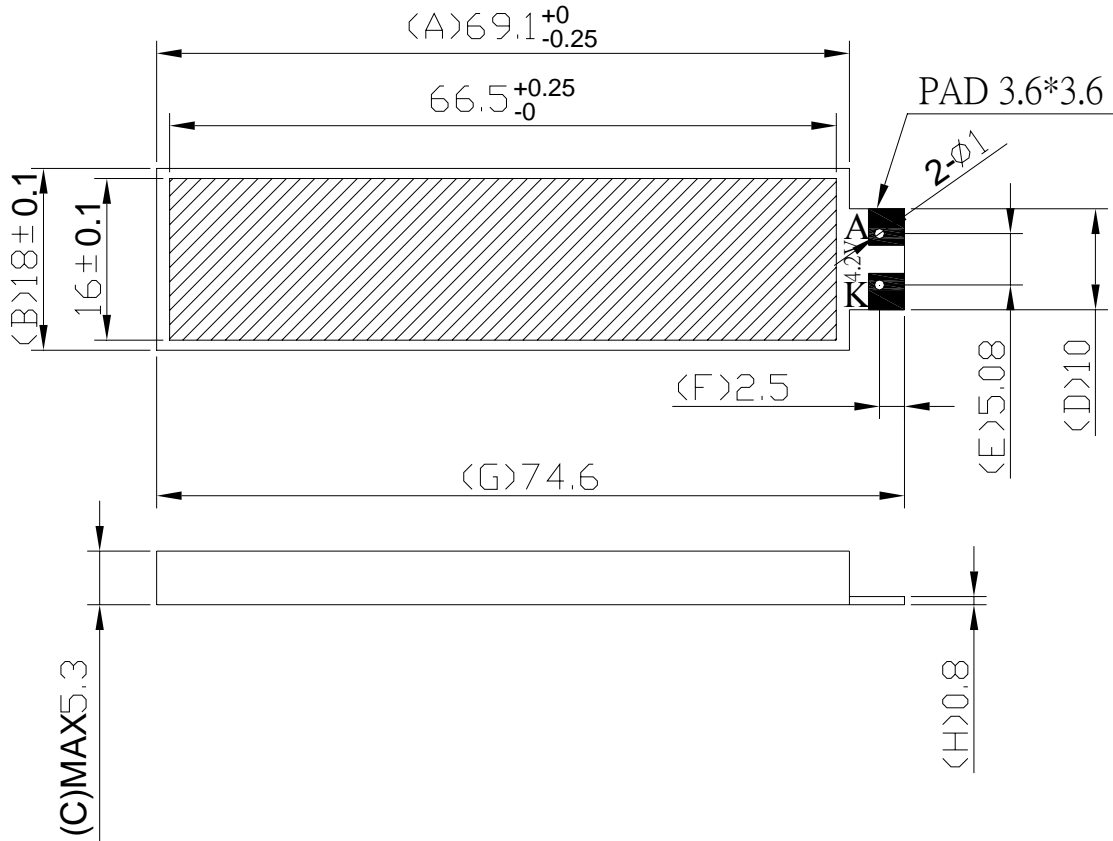
*SAM*

*SUNNY*

*JUAN*

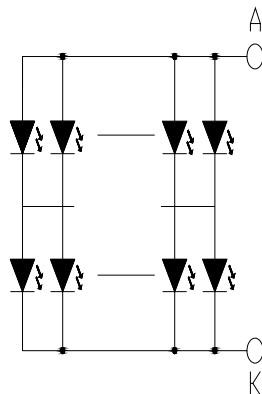


**Dimensions**



1. All dimensions are in millimeters.
2. Tolerance is  $\pm 0.20$ mm unless otherwise noted.

**Internal Circuit Diagram**



A: ANODE K: CATHODE  
 LED NUMBERS:  $13 \times 2 = 26$

**LY11BK-G****LED BACKLIGHT****Description**

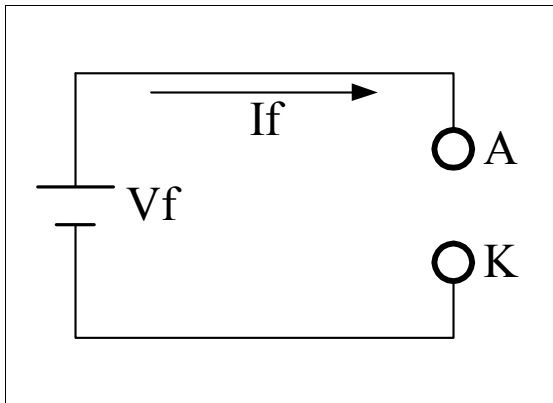
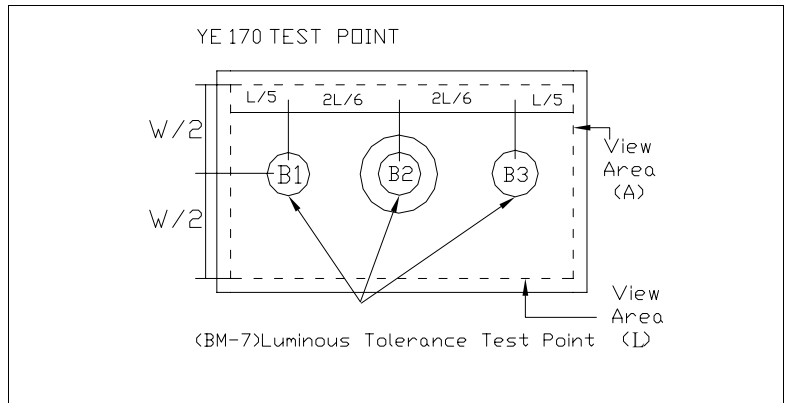
Part No.	LED Chip	
	Material	Emitting Color
LY11BK-G	GaP/GaP	Yellow Green

**Absolute Maximum Ratings at Ta=25 °C**

Parameter	Symbol	Rating	Unit
Power Dissipation	PD	1.144	W
Pulse Current(1/10Duty Cycle,0.1ms Pulse Width.)	IFP	100	mA
Forward Current	IF	260	mA
Reverse (Leakage)Current	Ir	130	uA
Reverse Voltage	VR	10	V
Operating Temperature Range	Topr.	-20 to +70	°C
Storage Temperature Range	Tstg.	-30 to +80	°C
Soldering Iron Temp.(1.6mm from seating plane)		350 for 3s MAX.	°C

**Electrical and Optical Characteristics:**

Parameter	Symbol	Condition	Min.	Typ.	Max.	Unit
Luminous Intensity	Iv	If=130mA	140	205	-	cd/m <sup>2</sup>
Forward Voltage	Vf	If=130mA	-	4.1	4.4	V
Luminous Tolerance	-	If=130mA	75	-	-	%
Peak Wavelength	$\lambda P$	IF=20mA/per chip	570	573	575	nm
Reverse Current Per Chip (Leakage Current Per Chip)	Ir	Vr=5V	-	-	10	uA
Spectrum Line Halfwidth	$\Delta\lambda$	IF=20mA/per chip	-	30	-	nm

**Remark**
**★1. Testing Method**

**★2. Measured Method**


(1) The test equipment is "TOPCON"BM-7 . Field ( $\theta$ )  $\square = 2^\circ$   $\square \nabla = 1^\circ$   $\square = 0.2^\circ$

(2)The "TOPCON"BM-7 test position of luminous intensity is B1~B3.

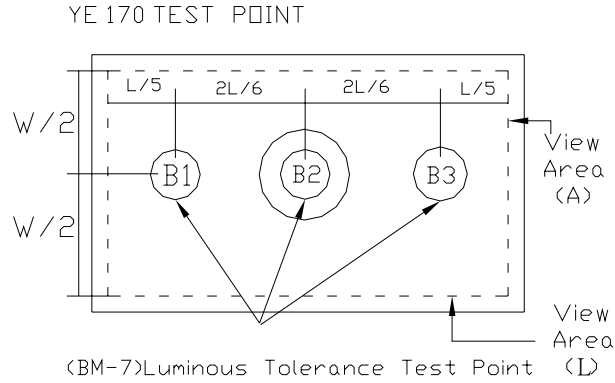
**★3. The "TOPCON"BM-7 test**

$$\text{Position of luminous Uniformity} = \frac{B(\text{MIN})}{B(\text{MAX})} \times 100\%$$

( 附表一 )

電性、輝度量測表

The test equipment is “TOPCON”BM-7



(1) The test equipment is “TOPCON”BM-7 Field ( $\theta$ ) =1° =0.2° =0.1

NO	VF (V)	IF (mA)	Location(CD/m <sup>2</sup> )						AVG	Uniormity (%)
			B1	B2	B3	B4	B5	B6		
1	4.17	130	206	224	215				215.0	92
2	4.12	130	222	245	227				231.3	91
3	4.15	130	201	231	198				210.0	86
4	4.16	130	220	250	230				233.3	88
5	4.13	130	218	235	215				222.7	91

缺點合計： 0 次缺點合計： 0 結果判定：  合格  不合格