



LEDTECH ELECTRONICS CORP.

NANYA ROAD, MUGANG ZHAOQING
CITY GUANGDONG CHINA.

TEL: 86-758-2875541, 2870651, 2877464, 2876185, 2877017

FAX: 86-758-2878014

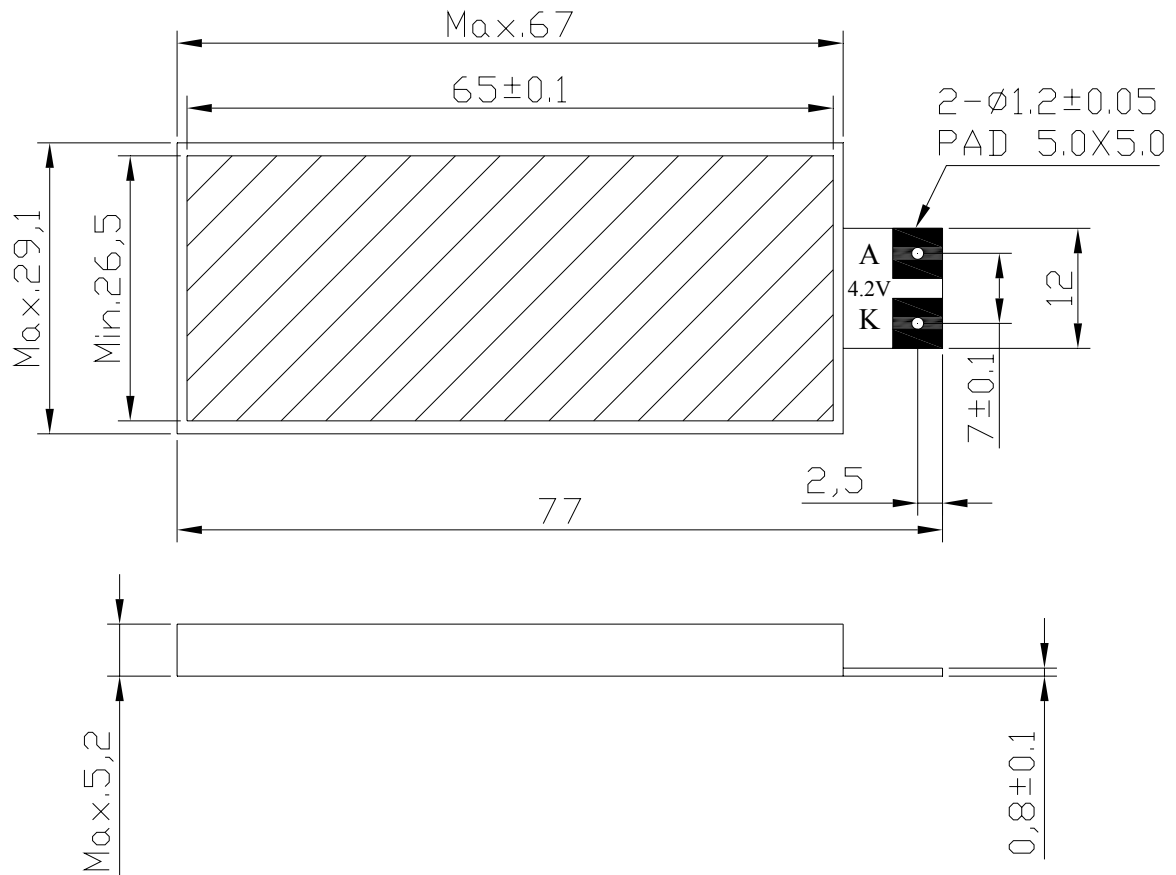
[Http://www.ledtech.com.tw](http://www.ledtech.com.tw)

SPECIFICATION

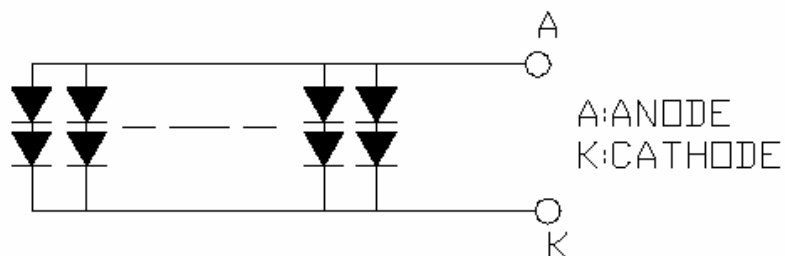
PART NO. : LY11BV-G
LED BACKLIGHT



Approved by	Checked by	Prepared by
<i>SAM</i>	<i>SUNNY</i>	<i>LEI</i>

Dimensions

- 1.All dimensions are in millimeters..
2. Tolerance is ± 0.20 mm unless otherwise noted.

Internal Circuit Diagram

LED NUMBERS: $22 \times 2 = 44$



LY11BV-G

LED BACKLIGHT

Description

Part No.	LED Chip	
	Material	Emitting Color
LY11BV-G	GaP/GaP	Yellow Green

Absolute Maximum Ratings at Ta=25 °C

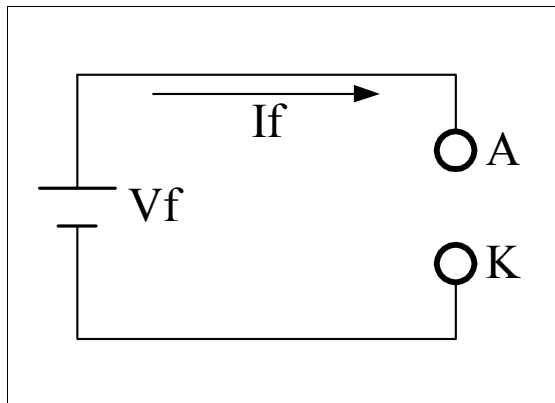
Parameter	Symbol	Rating	Unit
Power Dissipation	PD	2.112	W
Pulse Current(1/10Duty Cycle,0.1ms Pulse Width.)	IFP	100	mA
Forward Current	IF	440	mA
Reverse (Leakage)Current	Ir	220	uA
Reverse Voltage	VR	10	V
Operating Temperature Range	Topr.	-20 to +70	°C
Storage Temperature Range	Tstg.	-30 to +80	°C
Soldering Iron Temp.(1.6mm from seating plane)		350 for 3s MAX.	°C

Electrical and Optical Characteristics:

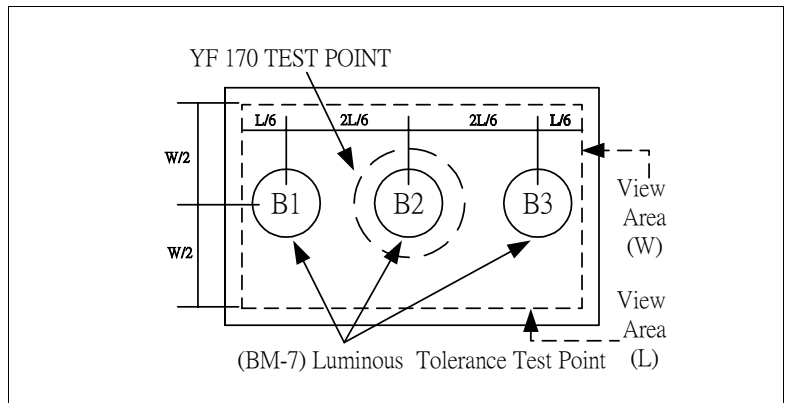
Parameter	Symbol	Condition	Min.	Typ.	Max.	Unit
Luminous Intensity	Iv	IF=220mA	250	305	-	cd/m ²
Forward Voltage	Vf	IF=220mA	3.8	4.2	4.8	V
Luminous Uniformity		IF=220mA	80	-	-	%
Dominant Wavelength	λd	IF=20mA/per chip	570	573	575	nm
Reverse Current Per Chip (Leakage Current Per Chip)	Ir	Vr=5V	-	-	10	μA
Spectrum Line Halfwidth	Δλ	IF=20mA/per chip	-	30	-	nm

Remark

★1. Testing Method



★2. Measured Method



(1) The test equipment is "TOPCON"BM-7 . Field (θ)

=2° V =1° =0.2°

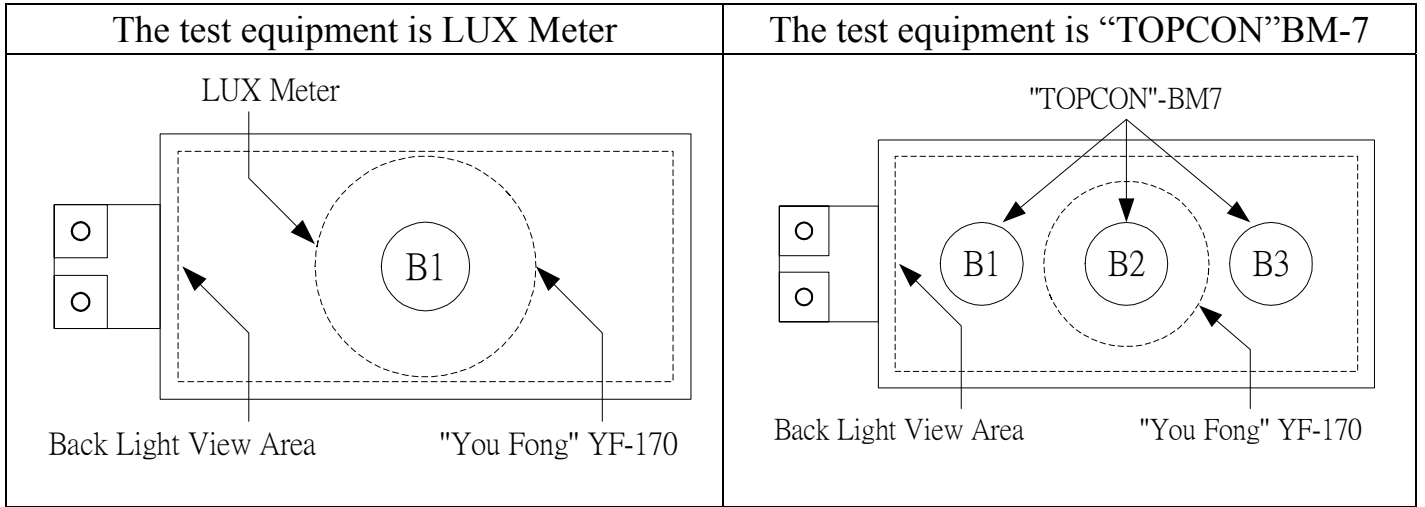
(2)The "TOPCON"BM-7 test position of luminous intensity is B1~B3.

★3. The "TOPCON"BM-7 test

Position of luminous Uniformity = $\frac{B(\text{MIN.})}{B(\text{MAX.})} \times 100\%$

(附表一)

電性、輝度量測表



TEST CONDITIONS : $V_{in} = 4.2V$, $I_f = 220\text{ mA}$ $T_a = 25^\circ\text{C}$

(1) The test equipment is "TOPCON"BM-7 Field (θ) =1° =0.2° =0.1

NO	VF	If (mA)	LUX	Location(CD/m ²)						AVG	Uniornity (%)
				B1	B2	B3	B4	B5	B6		
1	4.16	220		271	276	256	-	-	-	268	93
2	4.15	220		301	321	313	-	-	-	312	94
3	4.16	220		289	312	296	-	-	-	299	93
4	4.16	220		277	296	269	-	-	-	281	91
5	4.15	220		284	308	279	-	-	-	289	91

缺點合計： 0

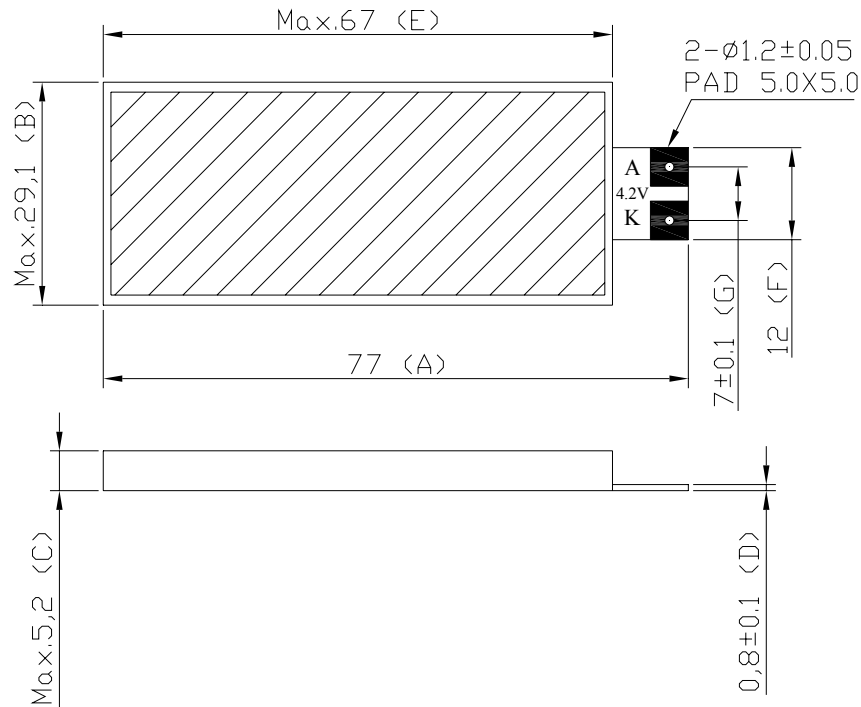
次缺點合計： 0

結果判定： 合格 不合格

(附表二)

外觀尺寸量測記錄表

TC = 25°C



NIT : (mm)						
Specification	NO	1	2	3	4	5
77±0.3	A	77.08	77.05	77.05	77.02	77.03
MAX.29.1	B	28.98	29.04	29.01	28.99	29.03
MAX.5.2	C	5.03	5.05	5.01	5.06	5.03
0.8±0.1	D	0.87	0.87	0.86	0.88	0.87
MAX.67	E	66.97	66.98	66.97	66.96	66.98
12±0.3	F	12.07	12.05	12.05	12.03	12.06
7±0.1	G	7.05	7.02	7.01	7.05	7.04

主缺點合計： 0 次缺點合計： 0 結果判定： 合格 不合格