



LEDTECH ELECTRONICS CORP.

NANYA ROAD, MUGANG ZHAOQING
CITY GUANGDONG CHINA.

TEL: 86-758-2875541, 2870651, 2877464, 2876185, 2877017

FAX: 86-758-2878014

[Http://www.ledtech.com.tw](http://www.ledtech.com.tw)

SPECIFICATION

PART NO. : LY11H3-G
LED BACKLIGHT



Approved by

Checked by

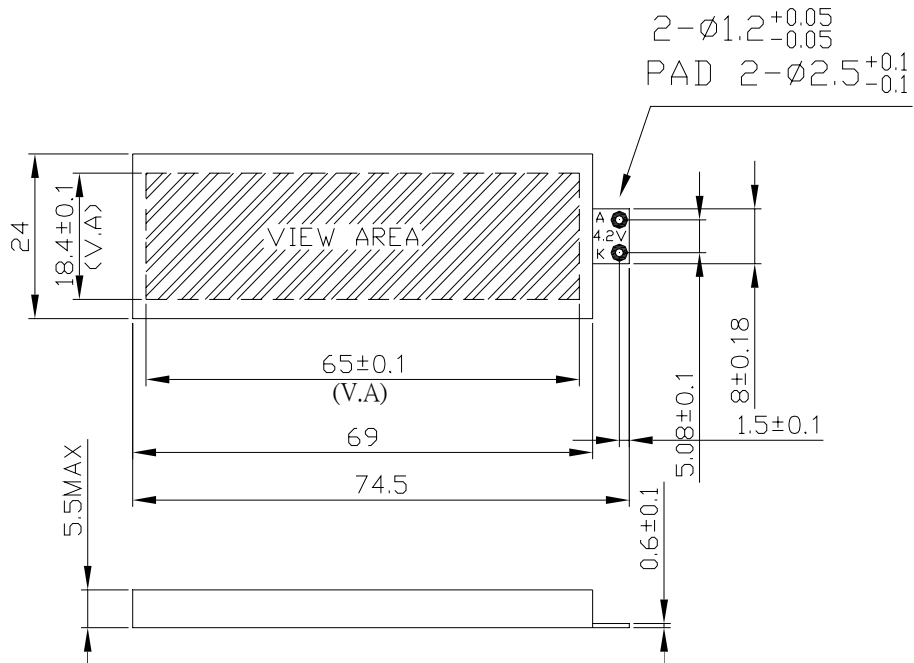
Prepared by

DUNG

史育悅

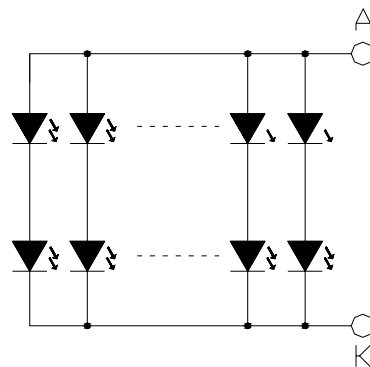
吳潔純

Dimensions



1. All dimensions are in millimeters.
2. Tolerance is ±0.25mm unless otherwise noted.

Internal Circuit Diagram



A: ANODE K: CATHODE
 LED NUMBERS: 2X12=24

**LY11H3-G****LED BACKLIGHT****Description**

Part No.	LED Chip	
	Material	Emitting Color
LY11H3-G	GaP/ GaP	Yellow Green

Absolute Maximum Ratings at Ta=25 °C

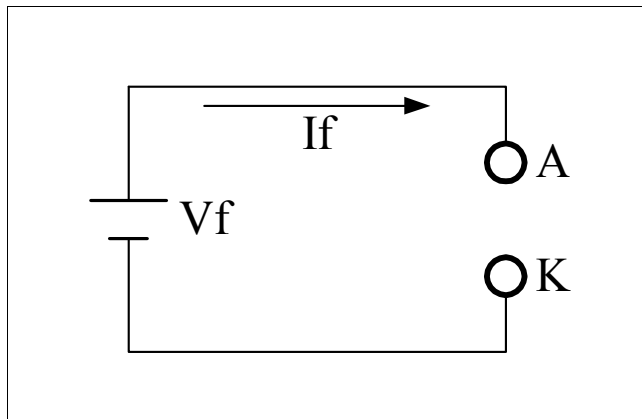
Parameter	Symbol	Rating	Unit
Power Dissipation	PD	1.152	W
Pulse Current(1/10Duty Cycle,0.1ms Pulse Width.)	IFP	100	mA
Forward Current	IF	240	mA
Reverse (Leakage)Current	Ir	120	uA
Reverse Voltage	VR	10	V
Operating Temperature Range	Topr.	-20 to +70	°C
Storage Temperature Range	Tstg.	-30 to +80	°C
Soldering Iron Temp .(1.6mm from seating plane)		350 for3s MAX.	°C

Electrical and Optical Characteristics:

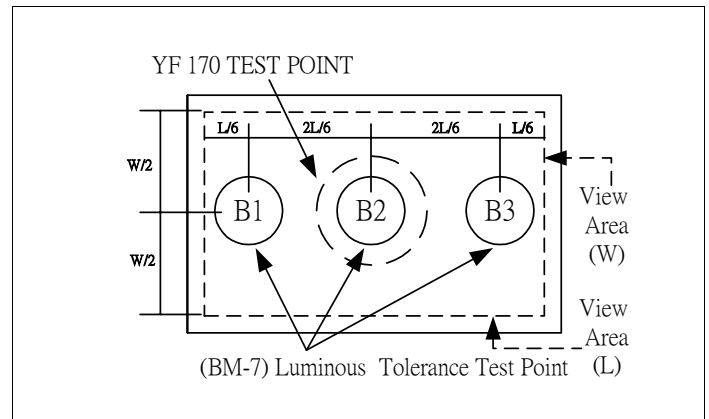
Parameter	Symbol	Condition	Min.	Typ.	Max.	Unit
Luminous Intensity	Iv	If=120mA	100	180	-	cd/m ²
Forward Voltage	Vf	If=120mA		4.1	4.8	V
Luminous Uniformity	-	If=120mA	75	-	-	%
Dominant Wavelength	λD	If=20mA/per chip	570	573	575	nm
Reverse Current Per Chip (Leakage Current Per Chip)	Ir	Vr=5V	-	-	10	μA
Spectrum Line Halfwidth	Δλ	If=20mA/per chip	-	30	-	nm

Remark

★1. Testing Method



★2. Measured Method



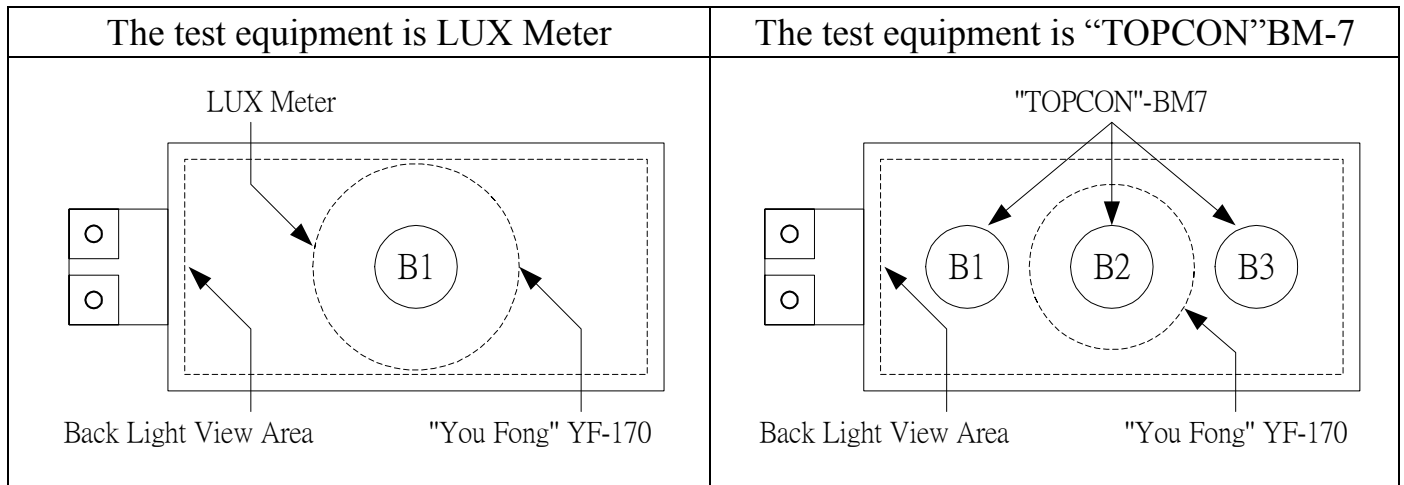
(1) The test equipment is "TOPCON"BM-7 . Field (θ) = 2° = 1° = 0.2°

(2)The "TOPCON"BM-7 test position of luminous intensity is B1~B3.

★3. The "TOPCON"BM-7 test

Position of luminous Uniformity = $\frac{B(\text{MIN})}{B(\text{MAX})} \times 100\%$

(附表一)

電性、輝度量測表

TEST CONDITIONS : $V_{in} = 4.8V$
 $I_f = 120\text{ mA}$
 $T_a = 25^\circ C$
(1) The test equipment is "TOPCON"BM-7 Field (θ) = 1° = 0.2° = 0.1

NO	VF (V)	If (mA)	Location(CD/m^2)						AVG	Uniornity (%)
			B1	B2	B3	B4	B5	B6		
1	4.0	120	185	195	202	-	-	-	194	92
2	4.1	120	205	219	221	-	-	-	215	93
3	4.1	120	213	205	229	-	-	-	216	90
4	4.1	120	191	215	208	-	-	-	205	89
5	4.0	120	189	197	215	-	-	-	200	88

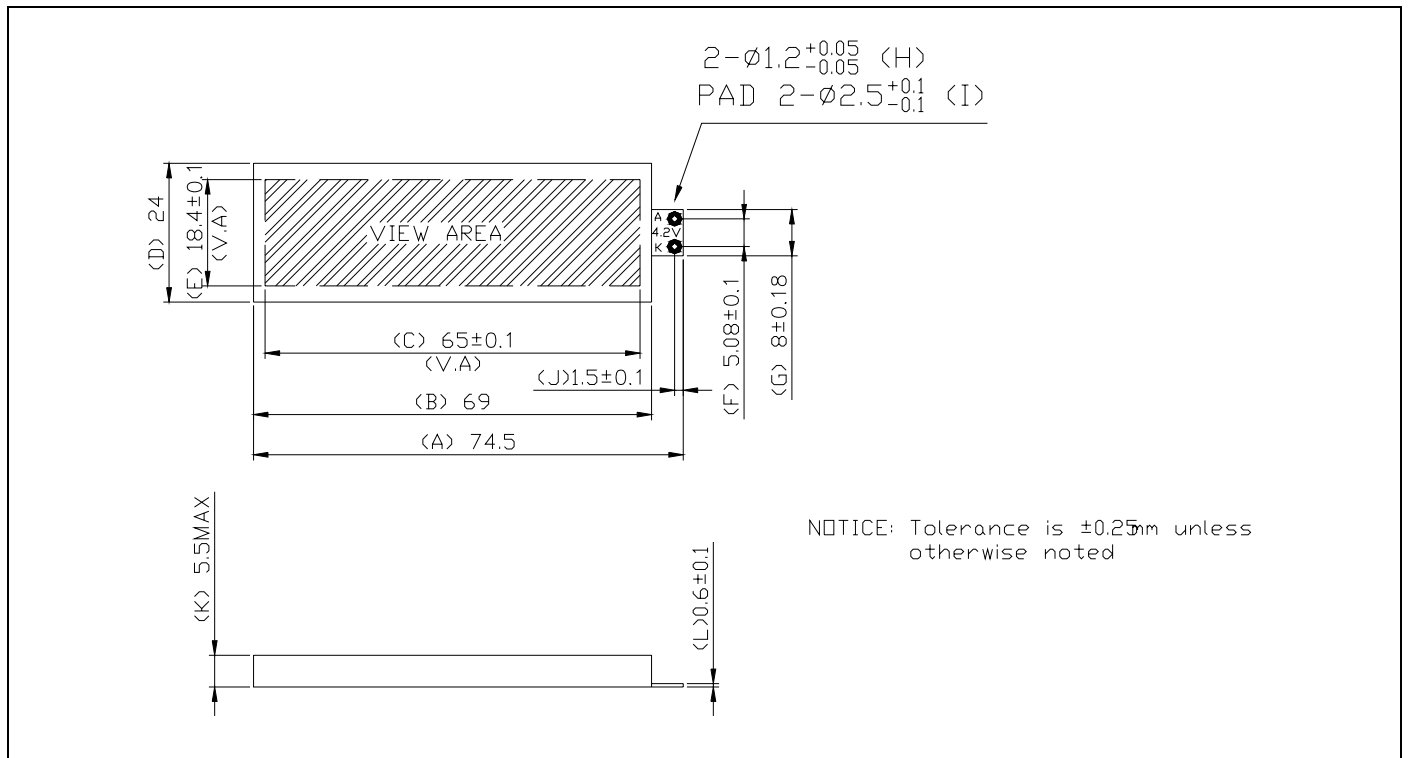
 主缺點合計： 0 次缺點合計： 0

 結果判定： 合格 不合格

(附表二)

外觀尺寸量測記錄表

TC = 25°C



NIT : (mm)	Part NO :					
Specification	NO	1	2	3	4	5
74.5 ± 0.25	A	74.45	74.43	74.44	74.6	74.4
69 ± 0.25	B	68.89	68.9	68.87	69	68.88
65 ± 0.1	C	65	65	65	65	65
24 ± 0.25	D	23.95	23.96	23.97	23.97	24
18.4 ± 0.1	E	18.4	18.4	18.4	18.4	18.4
5.08 ± 0.1	F	5.08	5.08	5.05	5.08	5.08
8 ± 0.18	G	5.05	8.03	0.03	8.04	8.03
1.2 ± 0.05	H	1.2	1.2	1.2	1.2	1.2
2.5 ± 0.1	I	2.5	2.5	2.5	2.5	2.5
1.5 ± 0.1	J	1.5	1.5	1.5	1.5	1.5
5.5 MIX	K	5.35	5.34	5.35	5.38	5.4
0.6 ±0.1	L	0.61	0.63	0.62	0.61	0.62

主缺點合計： 0 次缺點合計： 0 結果判定： 合格 不合格