



LEDTECH ELECTRONICS CORP.

NANYA ROAD, MUGANG ZHAOQING
CITY GUANGDONG CHINA.

TEL: 86-758-2875541, 2870651, 2877464, 2876185, 2877017

FAX: 86-758-2878014

[Http://www.ledtech.com.tw](http://www.ledtech.com.tw)

SPECIFICATION

PART NO. : LY11BT-G
LED BACKLIGHT



Approved by

Checked by

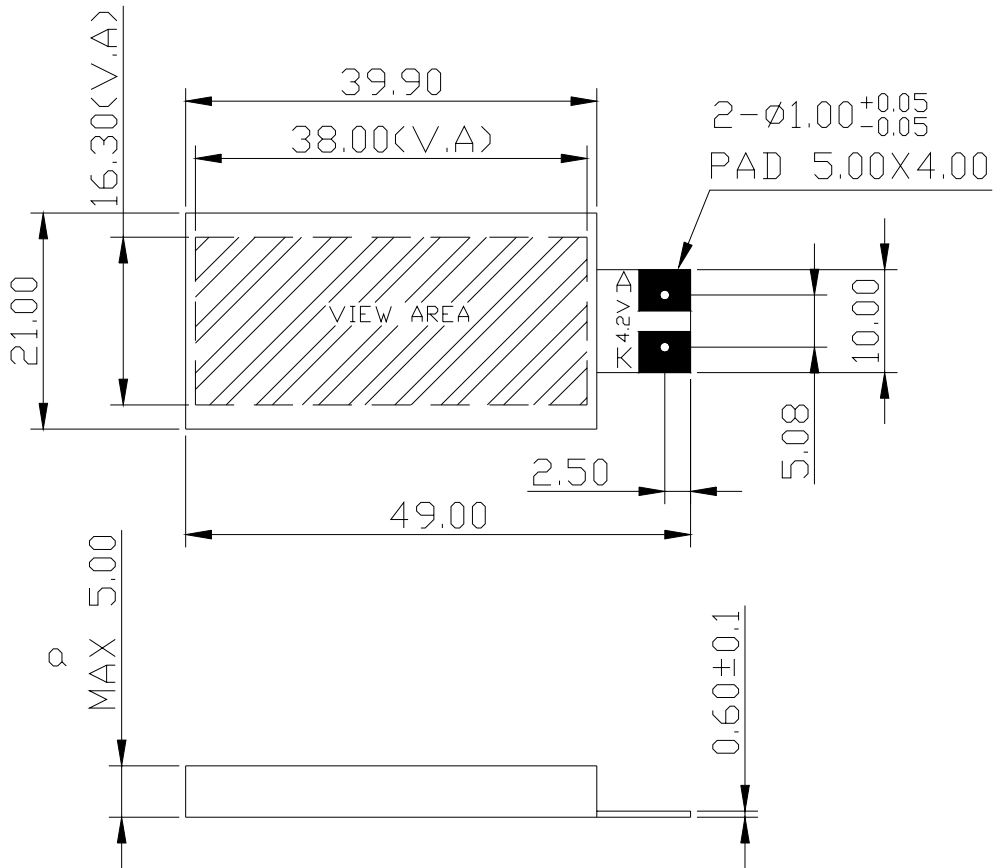
Prepared by

SAM

SUNNY

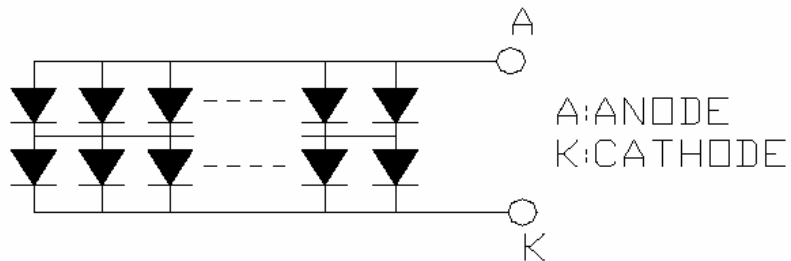
LEI

Dimensions



1. All dimensions are in millimeters..
2. Tolerance is ± 0.20 mm unless otherwise noted.

Internal Circuit Diagram



LED NUMBERS: 7X2=14

**LY11BT-G****LED BACKLIGHT****Description**

Part No.	LED Chip	
	Material	Emitting Color
LY11BT-G	GaP/GaP	Yellow Green

Absolute Maximum Ratings at Ta=25 °C

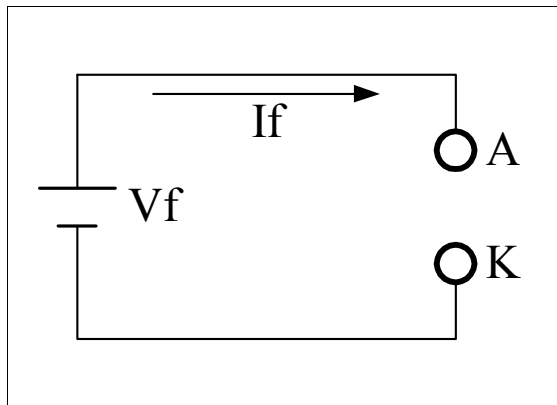
Parameter	Symbol	Rating	Unit
Power Dissipation	PD	672	mW
Pulse Current(1/10Duty Cycle,0.1ms Pulse Width.)	IFP	100	mA
Forward Current	IF	140	mA
Reverse (Leakage)Current	Ir	70	uA
Reverse Voltage	VR	10	V
Operating Temperature Range	Topr.	-20 to +70	°C
Storage Temperature Range	Tstg.	-30 to +80	°C
Soldering Iron Temp.(1.6mm from seating plane)		350 for 3s MAX.	°C

Electrical and Optical Characteristics:

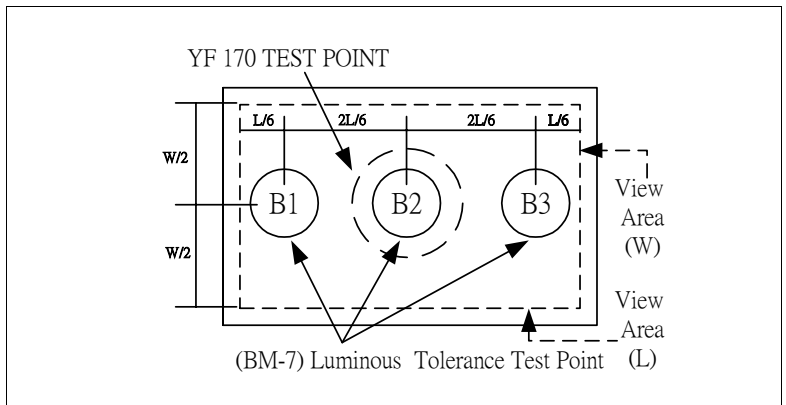
Parameter	Symbol	Condition	Min.	Typ.	Max.	Unit
Luminous Intensity	Iv	IF=70mA	168	270	-	cd/m ²
Forward Voltage	Vf	IF=70mA	3.8	4.2	4.8	V
Luminous Uniformity		IF=70mA	80	-	-	%
Dominant Wavelength	λd	IF=20mA/per chip	570	573	575	nm
Reverse Current Per Chip (Leakage Current Per Chip)	Ir	Vr=5V	-	-	10	μA
Spectrum Line Halfwidth	Δλ	IF=20mA/per chip	-	30	-	nm

Remark

★1. Testing Method



★2. Measured Method



(1) The test equipment is "TOPCON"BM-7 . Field (θ)

=2° V =1° =0.2°

(2)The "TOPCON"BM-7 test position of luminous intensity is B1~B3.

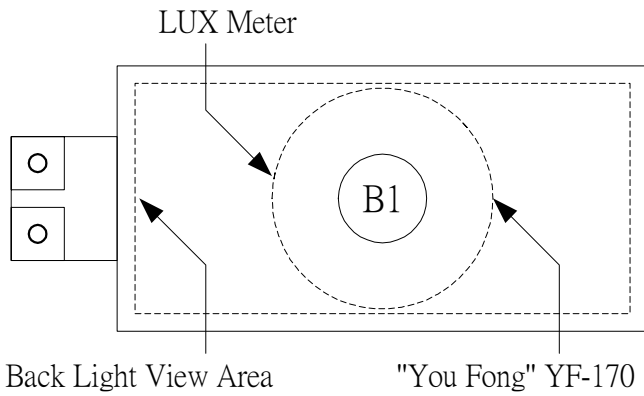
★3. The "TOPCON"BM-7 test

Position of luminous Uniformity = $\frac{B(\text{MIN.})}{B(\text{MAX.})} \times 100\%$

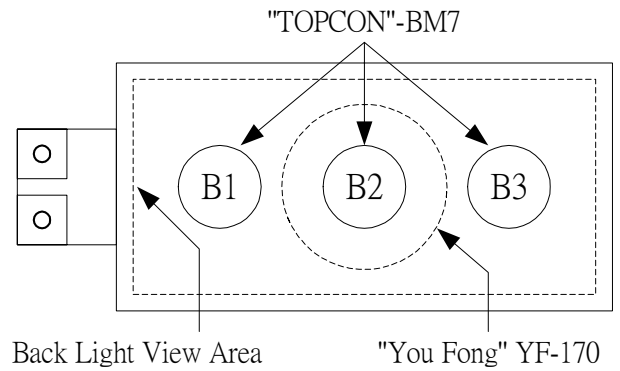
(附表一)

電性、輝度量測表

The test equipment is LUX Meter



The test equipment is "TOPCON"BM-7



TEST CONDITIONS : $V_{in} = 4.2V$, $I_f = 70\text{ mA}$ $T_a = 25^\circ\text{C}$

(1) The test equipment is "TOPCON"BM-7 Field (θ) =1° =0.2° =0.1

NO	VF	If (mA)	LUX	Location(CD/m ²)						AVG	Uniornity (%)
				B1	B2	B3	B4	B5	B6		
1	4.14	70		181	194	187	-	-	-	187	93
2	4.15	70		196	210	198	-	-	-	201	93
3	4.15	70		190	205	196	-	-	-	197	93
4	4.15	70		196	210	194	-	-	-	200	92
5	4.15	70		178	194	177	-	-	-	183	91

缺點合計： 0

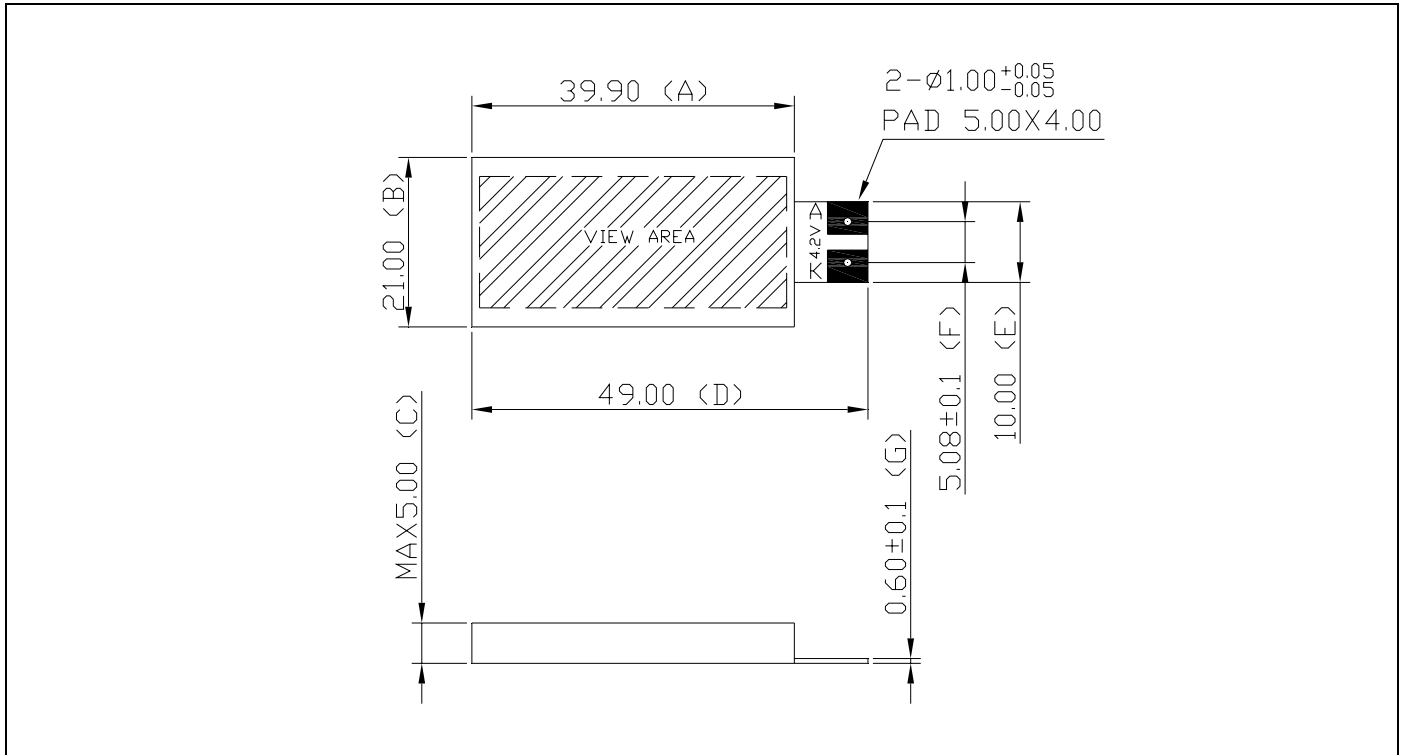
次缺點合計： 0

結果判定： 合格 不合格

(附表二)

外觀尺寸量測記錄表

TC = 25°C



NIT : (mm)						
Specification	NO	1	2	3	4	5
39.9±0.3	A	39.88	39.8	39.77	39.78	39.77
21.0±0.3	B	20.87	20.84	20.9	20.86	20.86
MAX.5.0	C	4.56	4.54	4.55	4.56	4.53
49.0±0.3	D	48.95	49.05	49.03	49.02	49.02
10.0±0.3	E	10.01	10.0	10.0	9.99	9.98
5.08±0.1	F	5.10	5.05	5.07	5.06	5.08
0.6±0.1	G	0.66	0.65	0.66	0.66	0.66

主缺點合計： 0 次缺點合計： 0

結果判定： 合格 不合格