



LEDTECH ELECTRONICS CORP.

NANYA ROAD, MUGANG ZHAOQING
CITY GUANGDONG CHINA.

TEL: 86-758-2875541, 2870651, 2877464, 2876185, 2877017

FAX: 86-758-2878014

[Http://www.ledtech.com.tw](http://www.ledtech.com.tw)

SPECIFICATION

PART NO. : LY11JH-G-12V1
DOUBLE SIDED FPCB OVAL LED MODULE



Approved by

Checked by

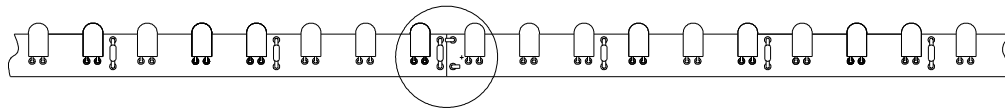
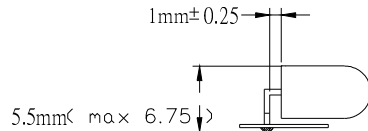
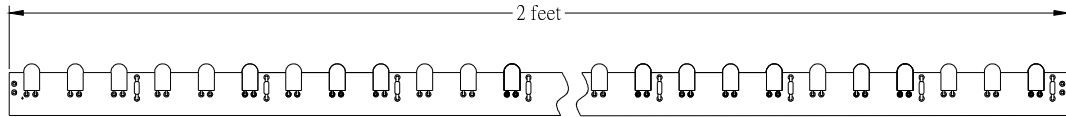
Prepared by

--

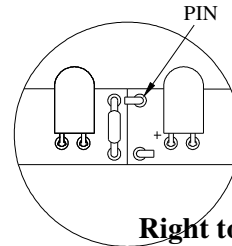
--

--

Assembly drawing



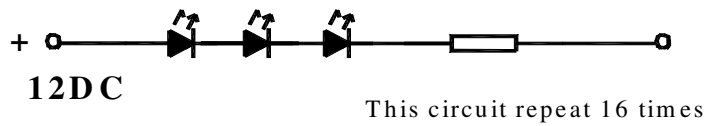
17 pcs will be connected to make
a 34 feet section



Right top on of Left

1. All dimensions are in millimeters
2. Tolerance is ± 0.5 mm unless otherwise noted

Circuits



Description

Part No.	LED Chip		Lens Color
	Material	Emitting Color	
LY11JH-G-12V1	InGaN/Sapphire	Green	Green Diffused



LY11JH-G-12V1

DOUBLE SIDED FPCB
OVAL LED MODULE**Absolute Maximum Ratings at Ta=25 °C**

Parameter	Symbol	Rating	Unit
Power Dissipation	P _D	5760	mW
D.C. Forward Current	I _F	480	mA
Operating Temperature Range	T _{opr.}	-25 to +85	°C
Storage Temperature Range	T _{stg.}	-40 to +100	°C
Lead Soldering Temp.(1.6mm from seating plane)		260 for 5s MAX.	°C
Electrostatic discharge (ESD)		6000	V

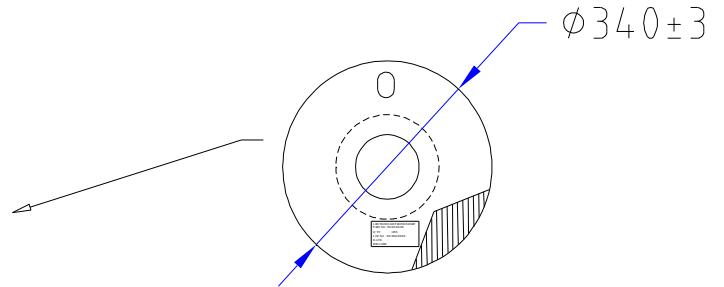
Electrical and Optical Characteristics:

Parameter	Symbol	Condition	Min.	Typ.	Max.	Unit
Luminous Intensity Per LED	I _v	I _f =20mA.	370	600		mcd
Forward Current	I _f	V _{in} =12 VDC	256		368	mA
Spectrum Line Halfwidth Per LED	Δλ	I _f =20mA		20		nm

ENCASED TYPE

QUANTITY: 1 PCS

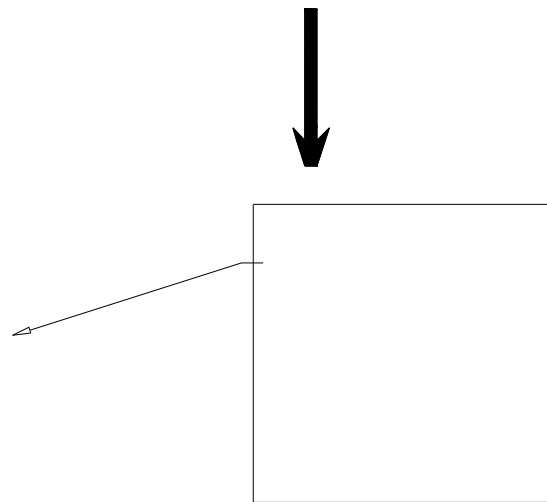
LEDTECH ELECTRONICS CORP.
PART NO :XXXXXXXX
Q'TY : 1 PCS
LOT NO :XXXXXXXXXX
DATE :
BIN CODE:



INNER PLASTIC PACKAGE

QUANTITY: 1 PCS
TOTAL: 1 PCS

PART NO.	XXXXXXXXXXXX				
LOT NO.	XXXXXXXXXX				
BIN CODE	Xx X	Xx X	Xx X	Xx X	TOTAL
QUANTITY	PCS	PCS	PCS	PCS	PCS
DATE	XXXX , XX , XX				



OUTER CARTON
QUANTITY: 1 PCS
TOTAL: 1 PCS

C/T NO. 箱 號	XX
PART NO. 料 號	XXXXXXXXXX
QUANTITY 數 量	1 PCS
N.W. 淨 重	KGS
G.W. 毛 重	KGS
REMARK 備 註	

