



LEDTECH ELECTRONICS CORP.

NANYA ROAD, MUGANG ZHAOQING
CITY GUANGDONG CHINA.

TEL: 86-758-2875541, 2870651, 2877464, 2876185, 2877017

FAX: 86-758-2878014

[Http://www.ledtech.com.tw](http://www.ledtech.com.tw)

SPECIFICATION

PART NO. : LFD012W3-010



Approved by

Checked by

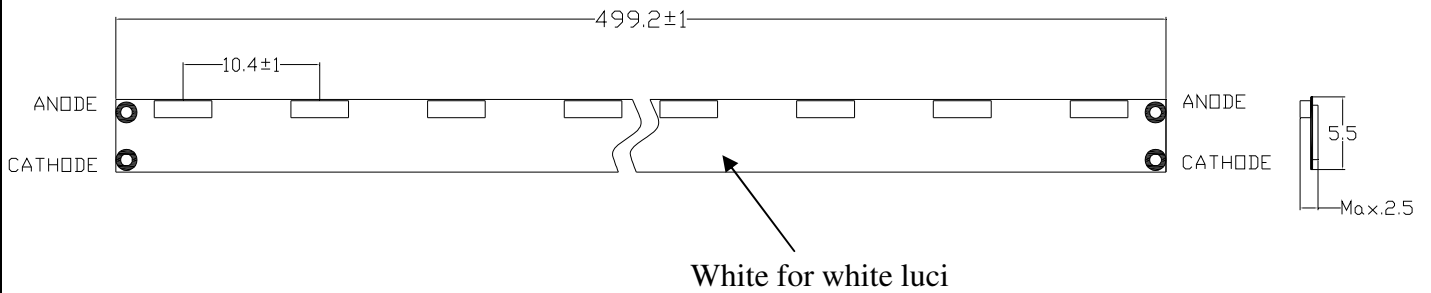
Prepared by

Tung

Yang

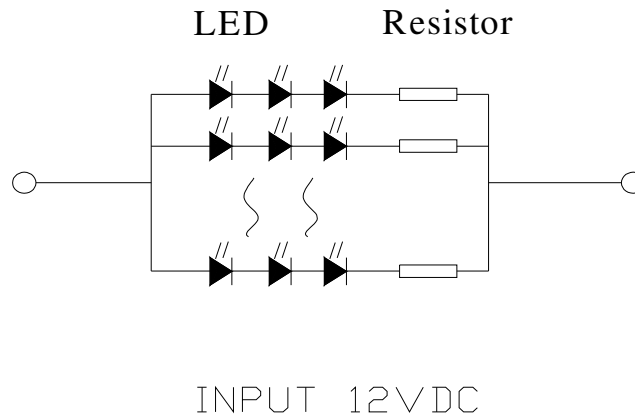
Sean

Package Dimensions



1. All dimensions are in millimeters
2. Tolerance is ± 0.5 mm unless otherwise noted
3. One strip connected by 3 Units and every 3 SMDs can be cut of
4. 48 SMDs divisible in 3 double-steps
5. Voltage supply: 12 VDC

Circuits



This circuit have 16 parallel.

Description

Part No.	LED Chip		Correlated Colour Temperature
	Material	Emitting Color	
LFD012W3-010	InGaN/Sapphire	White	6000~7500 °K



LFD012W3-010

Strip Light

Absolute Maximum Ratings at Ta=25 °C

Parameter	Symbol	Rating	Unit
Power Dissipation	PD	3.4	W
D.C. Forward Current	IF	225	mA
Operating Temperature Range	Topr.	-25 to +85	°C
Storage Temperature Range	Tstg.	-40 to +100	°C
Electrostatic discharge	ESD	6000	V
Electrostatic discharge (ESD)	Tsol.	Dip Soldering: 260°C for 5sec Hand soldering: 350°C for 3sec	

Electrical and Optical Characteristics:

Parameter	Symbol	Condition	Min.	Typ.	Max.	Unit
Luminous Intensity (Per LED)	Iv	If=20mA	930	1100		mcd
Forward Voltage (Per LED)	Vf	If=20mA	2.8		3.6	V
Forward Current	If	Vin=12VDC		160	225	mA
Viewing Angle (Per LED)	2 θ 1/2	If=20mA		120		deg

Resistor Value:

Rank	Forward Voltage	Resistor	Min.	Typ.	Max.	Unit
VF1	2.8~3.2	300 ohm	8	10	12	mA
VF2	3.2~3.6	180 ohm	6.66	10	13.33	mA

Luminous Intensity Ranks (Ta=25°C)

Luminous Intensity(mcd)								
Rank								
7	930~1,000	8	1,000~1,100	9	1,100~1,200	A	1,200~1,320	

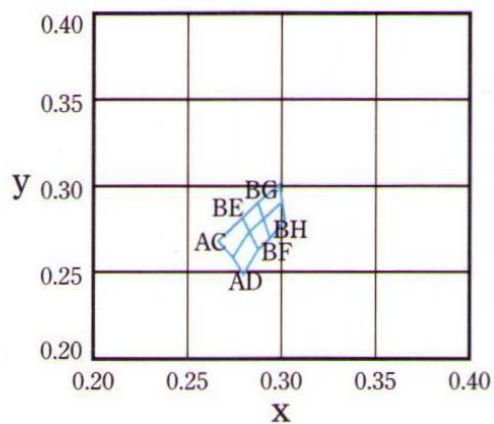
Chromaticity Ranks ★4 (Ta=25°C)

Rank	Chromaticity		Rank	Chromaticity	
	x	y		x	y
AC	0.273	0.259	BF	0.282	0.274
	0.266	0.268		0.290	0.281
	0.278	0.282		0.293	0.270
	0.282	0.274		0.287	0.263
AD	0.279	0.249	BG	0.287	0.291
	0.273	0.259		0.298	0.302
	0.282	0.274		0.300	0.292
	0.287	0.263		0.290	0.281
BE	0.278	0.282	BH	0.290	0.281
	0.287	0.291		0.300	0.292
	0.290	0.281		0.302	0.281
	0.282	0.274		0.293	0.270

★4 軸上色度

★4 Axial Chromaticity

(If=20mA)



V_F Ranks (Ta=25°C)

Rank	Forward Voltage(V)
1 : V _{F1}	2.8~3.2
2 : V _{F2}	3.2~3.6

ENCASED TYPE

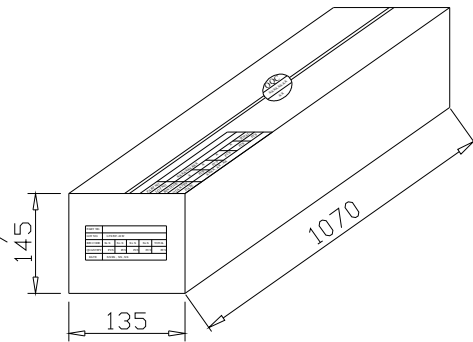
PLASTIC PACKAGE
 QUANTITY: 1 PCS

CONTENTS CO.LTD.
 PART NO : LFX50F-48-W
 Q'TY : 1 PCS
 LOT NO :XXXXXXXXXX
 DATE :
 BIN CODE:



INNER BOX
 QUANTITY: 40 PACKETS
 TOTAL: 40 PCS

PART NO.	LFX50F-48-W				
LOT NO.	XXXXXXXXXX				
BIN CODE	Xx X	Xx X	Xx X	Xx X	TOTAL
QUANTITY	PCS	PCS	PCS	PCS	PCS
DATE	XXXX, XX, XX				



OUTER CARTON
 QUANTITY: 4 BOX
 TOTAL: 160 PCS

C/T NO. 箱 號	XX	
PART NO. 料 號	LFX50F-48-W	
QUANTITY 數 量	200	PCS
N.W. 淨 重		KGS
G.W. 毛 重		KGS
REMARK 備 註		

