



LEDTECH ELECTRONICS CORP.

NANYA ROAD,MUGANG ZHAOQING  
CITY GUANGDONG CHINA.

TEL:86-758-2875541,2870651,2877464,2876185,2877017

FAX:86-758-2878014

*Http://www.ledtech.com.tw*

# SPECIFICATION

*PART NO. : LY11GL-HY1-012*

LED LINE FIEX SMD

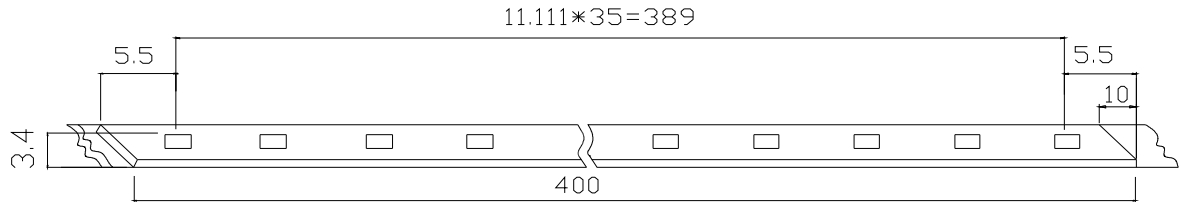
Approved by

Checked by

Prepared by

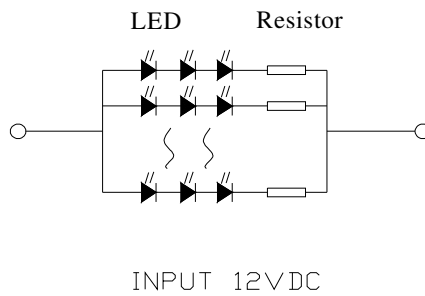
--	--	--

### Assembly drawing



1. All dimensions are in millimeters
2. Tolerance is  $\pm 0.5$  mm unless otherwise noted
3. One strip comprised by 36 pcs LED

### Circuits



### Description

Part No.	LED Chip		Lens Color
	Material	Emitting color	
LY11GL-HY1-012	AlGaInP/GaAs	Yellow	Water clear



LY11GL-HY1-012

LED LINE FIEX SMD

**Absolute Maximum Ratings at Ta=25 °C**

Parameter	Symbol	Rating	Unit
Power Dissipation	P <sub>D</sub>	4320	mW
D.C. Forward Current	I <sub>F</sub>	360	mA
Operating Temperature Range	T <sub>opr.</sub>	-25 to +85	°C
Storage Temperature Range	T <sub>stg.</sub>	-40 to +100	°C
Lead Soldering Temp.(1.6mm from seating plane) for 5 seconds	T <sub>sol.</sub>	260	°C

**Electrical and Optical Characteristics:**

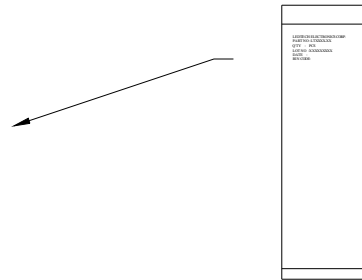
Parameter	Symbol	Condition	Min.	Typ.	Max.	Unit
Luminous Intensity	I <sub>v</sub>	I <sub>f</sub> =20mA.	10.98	18.36		cd
Forward Current	I <sub>f</sub>	V <sub>f</sub> =12 v	180		240	mA
Dominant Wavelength	λ <sub>D</sub>	I <sub>f</sub> =20mA		591		nm
Spectrum Line Halfwidth Per LED	Δλ	I <sub>f</sub> =20mA		26		nm

**ENCASED TYPE**

**PLASTIC PACKAGE**

QUANTITY: 1 PCS

LEDTECH ELECTRONICS CORP.  
 PART NO :LTXXXX-XX  
 Q'TY : PCS  
 LOT NO :XXXXXXXXXX  
 DATE :  
 BIN CODE: IV: X Coordinates: X

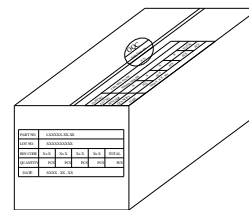


**INNER BOX**

QUANTITY: 100 PACKETS

TOTAL: 100 PCS

PART NO.	LXXXXX-XX-XX				
LOT NO.	XXXXXXXXXX				
BIN CODE	Xx X	Xx X	Xx X	Xx X	TOTAL
QUANTITY	PCS	PCS	PCS	PCS	PCS
DATE	XXXX, XX, XX				



**OUTER CARTON**

QUANTITY: 4 BOX

TOTAL: 400 PCS

C/T NO. 箱號	XX
PART NO. 料號	LXXXXX-XX-XX
	PCS
	KGS
	KGS

