



Model Number

OMH-11

Mounting aid for round steel
 \varnothing 10 ... 14 mm or sheet 1 mm ... 5 mm

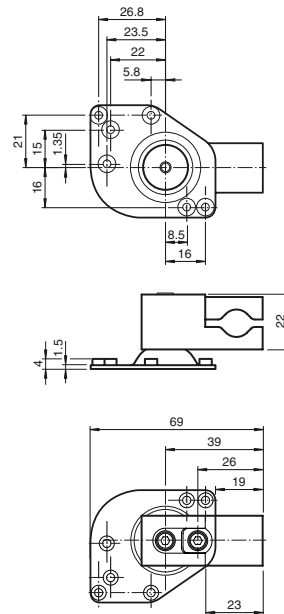
Features

- Bracket for round steel or sheet

Application

The all-in-one mounting bracket enables the sensor to be mounted onto a 10 mm ... 14 mm round rod as well as onto 1 mm ... 5 mm flat profiles at the same time. The functional clamping profile of the bracket eliminates the need for multiple brackets. The two separate mounting screws of the clamping profile allow for the sensor to be mounted and aligned in two distinct steps, one after the other.

Dimensions



Technical data

Mechanical specifications

Material	Metal sheet (steel), zinc-plated aluminum
Mass	approx. 77 g
Tightening torque, fastening screws	1.4 Nm
Mounting	Mounting accessories included

Suitable series

Series	MLV12
--------	-------