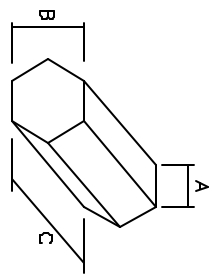
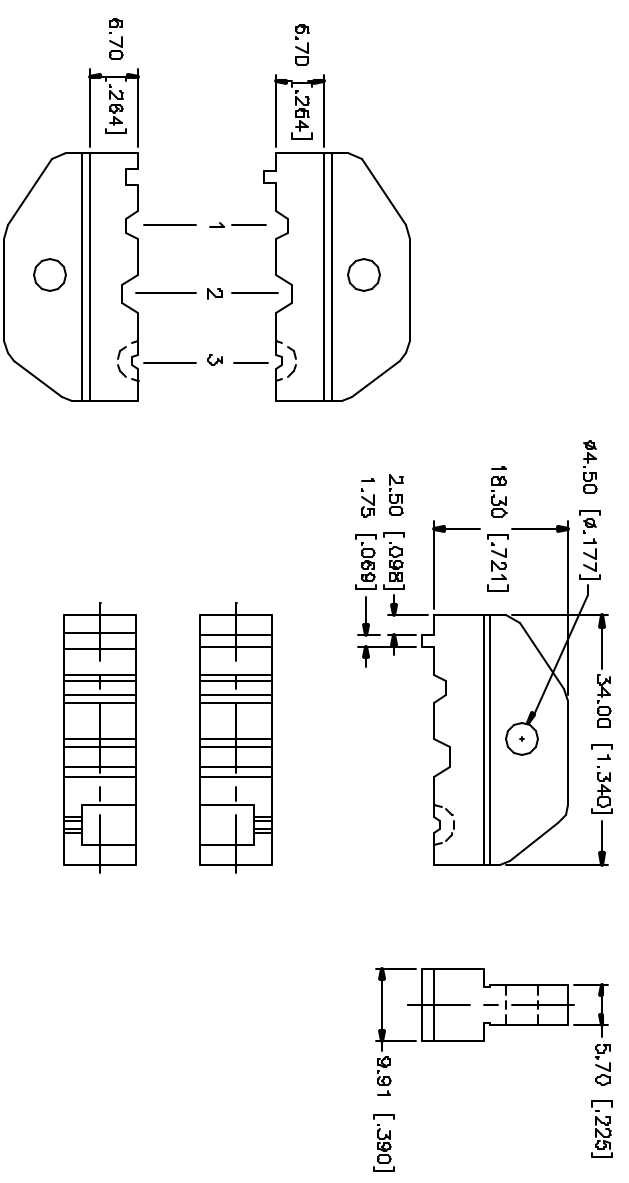


REV.	DATE	DESCRIPTION
A	08/31/04	UPDATE DRAWING FORMAT



	A	B	C
1	1.87 [.074]	3.24 [.128]	9.91 [.390]
2	2.61 [.103]	4.52 [.178]	9.91 [.390]
3	1.00 [.039]	1.73 [.068]	2.54 [.100]
4			

NO.	DESCRIPTION	MATERIAL	FINISH	QTY	UNIT PRICE	TOTAL PRICE
1	DIE BODY	CAST STEEL	BLK. OXIDE			
2						
3						
4						
5						
6						
7						
8						

NO.	DESCRIPTION	MATERIAL	FINISH	QTY	UNIT PRICE	TOTAL PRICE
1	DIE BODY	CAST STEEL	BLK. OXIDE			
2						
3						
4						
5						
6						
7						
8						

NO.	DESCRIPTION	MATERIAL	FINISH	QTY	UNIT PRICE	TOTAL PRICE
1	DIE BODY	CAST STEEL	BLK. OXIDE			
2						
3						
4						
5						
6						
7						
8						

NO.	DESCRIPTION	MATERIAL	FINISH	QTY	UNIT PRICE	TOTAL PRICE
1	DIE BODY	CAST STEEL	BLK. OXIDE			
2						
3						
4						
5						
6						
7						
8						

NO.	DESCRIPTION	MATERIAL	FINISH	QTY	UNIT PRICE	TOTAL PRICE
1	DIE BODY	CAST STEEL	BLK. OXIDE			
2						
3						
4						
5						
6						
7						
8						

NO.	DESCRIPTION	MATERIAL	FINISH	QTY	UNIT PRICE	TOTAL PRICE
1	DIE BODY	CAST STEEL	BLK. OXIDE			
2						
3						
4						
5						
6						
7						
8						

NO.	DESCRIPTION	MATERIAL	FINISH	QTY	UNIT PRICE	TOTAL PRICE
1	DIE BODY	CAST STEEL	BLK. OXIDE			
2						
3						
4						
5						
6						
7						
8						

NO.	DESCRIPTION	MATERIAL	FINISH	QTY	UNIT PRICE	TOTAL PRICE
1	DIE BODY	CAST STEEL	BLK. OXIDE			
2						
3						
4						
5						
6						
7						
8						

NO.	DESCRIPTION	MATERIAL	FINISH	QTY	UNIT PRICE	TOTAL PRICE
1	DIE BODY	CAST STEEL	BLK. OXIDE			
2						
3						
4						
5						
6						
7						
8						

NO.	DESCRIPTION	MATERIAL	FINISH	QTY	UNIT PRICE	TOTAL PRICE
1	DIE BODY	CAST STEEL	BLK. OXIDE			
2						
3						
4						
5						
6						
7						
8						

NO.	DESCRIPTION	MATERIAL	FINISH	QTY	UNIT PRICE	TOTAL PRICE
1	DIE BODY	CAST STEEL	BLK. OXIDE			
2						
3						
4						
5						
6						
7						
8						

NO.	DESCRIPTION	MATERIAL	FINISH	QTY	UNIT PRICE	TOTAL PRICE
1	DIE BODY	CAST STEEL	BLK. OXIDE			
2						
3						
4						
5						
6						
7						
8						

NO.	DESCRIPTION	MATERIAL	FINISH	QTY	UNIT PRICE	TOTAL PRICE
1	DIE BODY	CAST STEEL	BLK. OXIDE			
2						
3						
4						
5						
6						
7						
8						

NO.	DESCRIPTION	MATERIAL	FINISH	QTY	UNIT PRICE	TOTAL PRICE
1	DIE BODY	CAST STEEL	BLK. OXIDE			
2						
3						
4						
5						
6						
7						
8						

NO.	DESCRIPTION	MATERIAL	FINISH	QTY	UNIT PRICE	TOTAL PRICE
1	DIE BODY	CAST STEEL	BLK. OXIDE			
2						
3						
4						
5						
6						
7						
8						

NO.	DESCRIPTION	MATERIAL	FINISH	QTY	UNIT PRICE	TOTAL PRICE
1	DIE BODY	CAST STEEL	BLK. OXIDE			
2						
3						
4						
5						
6						
7						
8						

NO.	DESCRIPTION	MATERIAL	FINISH	QTY	UNIT PRICE	TOTAL PRICE
1	DIE BODY	CAST STEEL	BLK. OXIDE			
2						
3						
4						
5						
6						
7						
8						

NO.	DESCRIPTION	MATERIAL	FINISH	QTY	UNIT PRICE	TOTAL PRICE
1	DIE BODY	CAST STEEL	BLK. OXIDE			
2						
3						
4						
5						
6						
7						
8						

NO.	DESCRIPTION	MATERIAL	FINISH	QTY	UNIT PRICE	TOTAL PRICE
1	DIE BODY	CAST STEEL	BLK. OXIDE			
2						
3						
4						
5						
6						
7						
8						

NO.	DESCRIPTION	MATERIAL	FINISH	QTY	UNIT PRICE	TOTAL PRICE
1	DIE BODY	CAST STEEL	BLK. OXIDE			
2						
3						
4						
5						
6						
7						
8						

NO.	DESCRIPTION	MATERIAL	FINISH	QTY	UNIT PRICE	TOTAL PRICE
1	DIE BODY	CAST STEEL	BLK. OXIDE			
2						
3						
4						
5						
6						
7						
8						

NO.	DESCRIPTION	MATERIAL	FINISH	QTY	UNIT PRICE	TOTAL PRICE
1	DIE BODY	CAST STEEL	BLK. OXIDE			
2						
3						
4						
5						
6						
7						
8						

NO.	DESCRIPTION	MATERIAL	FINISH	QTY	UNIT PRICE	TOTAL PRICE
1	DIE BODY	CAST STEEL	BLK. OXIDE			
2						
3						
4						
5						
6						
7						
8						

NO.	DESCRIPTION	MATERIAL	FINISH	QTY	UNIT PRICE	TOTAL PRICE
1	DIE BODY	CAST STEEL	BLK. OXIDE			
2						
3						
4						
5						
6						
7						
8						

NO.	DESCRIPTION	MATERIAL	FINISH	QTY	UNIT PRICE	TOTAL PRICE
1	DIE BODY	CAST STEEL	BLK. OXIDE			
2						
3						
4						
5						
6						
7						
8						

NO.	DESCRIPTION	MATERIAL	FINISH	QTY	UNIT PRICE	TOTAL PRICE
1	DIE BODY	CAST STEEL	BLK. OXIDE			
2						
3						
4	</					