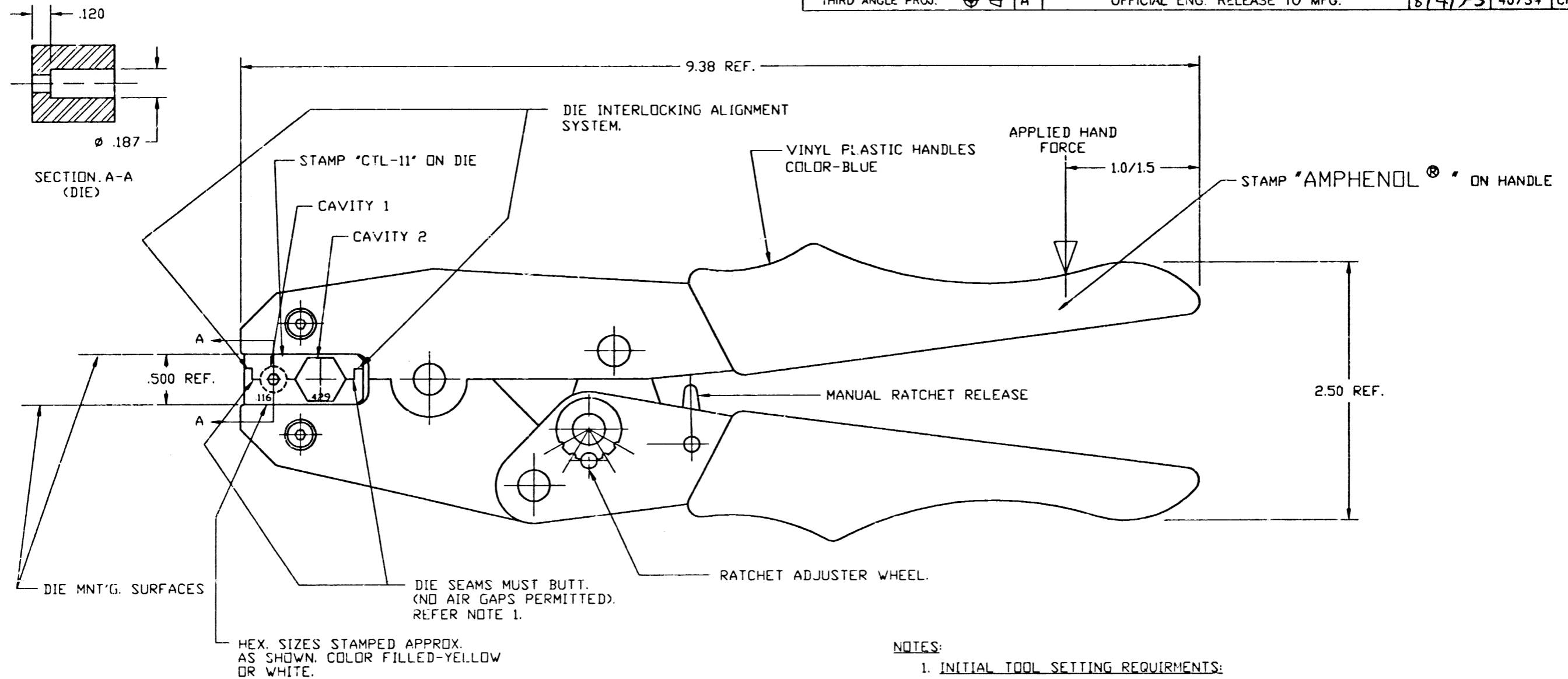


CTL-11		REVISIONS			
DRAWING NO.	REV	DESCRIPTION	DATE	ECO	APPR
THIRD ANGLE PROJ.	A	OFFICIAL ENG. RELEASE TO MFG.	8/4/95	40734	CPM/OR



NOTES:

1. INITIAL TOOL SETTING REQUIREMENTS:

WITH DIES FIRMLY AFFIXED IN TOOL ON THE DIE MNT'G. SURFACES, CLOSE THE TOOL FULLY (UNTIL THE RATCHET RELEASES) WITH 25-35 LBS. HAND FORCE. THE DIES MUST BE 'BUTTED' (TOUCHING BOTH FRONT & REAR SURFACES). THE RATCHET ADJUSTER WHEEL SHOULD BE POSITIONED IN THE CENTER INDENT (+/- ONE INDENT POSITION).

2. NOTE: LABEL 999-420 MUST BE AFFIXED TO TOOL CONTAINER BOX.

3. DO NOT SCALE THIS DRAWING.

4. UNLESS OTHERWISE SPECIFIED, ALL DIMENSIONS ARE AFTER PLATING.

CAVITY NO	DIM. ACROSS HEX FLATS	GROOVE ACCOMMODATIONS
1	.116 $\begin{smallmatrix} +.000 \\ -.003 \end{smallmatrix}$	CENTER CONTACT
2	.429 $\pm .003$	BELDEN 9913, 9914

UNLESS OTHERWISE SPECIFIED, DIMENSIONS ARE IN INCHES AND TOLERANCES ARE:
 2 PLACE DECIMAL 3 PLACE DECIMAL ANGLES
 $\pm .015$ (0,381 mm) $\pm .005$ (0,127 mm) $\pm 1^\circ$

NOTICE - These drawings, specifications, or other data (1) are, and remain the property of Amphenol Corp. (2) must be returned upon request; and (3) are confidential and not to be disclosed to any person other than those to whom they are given by Amphenol Corp. The furnishing of these drawings, specifications, or other data by Amphenol Corp., or to any other person to anyone for any purpose is not to be regarded by implication or otherwise in any manner licensing, granting rights or permitting such holder or any other person to manufacture, use or sell any product, process or design, patented or otherwise, that may in any way be related to or disclosed by said drawings, specifications, or other data.

MATERIAL
 MATERIAL & FINISH
 AS PURCHASED

REFERENCE
 EAR 962090-5

DRAWN
 C. McGRATH
 DATE
 6/14/95

ENGINEER
C. W. Payne
 DATE
 7-28-95

APPROVED
C. W. Payne
 DATE
 7-28-95

CAD FILE
 F:\DEPT611\TOOLS\CTL-11

TITLE
 QUICK CRIMP TOOL
 FOR 'N'
 CRIMP PLUGS

Amphenol
 Amphenol Corporation
 RF/Microwave Operations
 Danbury, Conn. U.S.A. 06810

SCALE: 1:1 SHEET OF

CODE ID DWG SIZE DRAWING NO.
 74868 B CTL-11

ISSUE
 A