



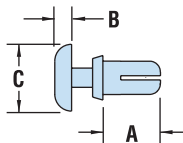
**STANDARD
PACK
1,000/BAG**



HEYClip™ Snap Rivets – continued

WILL FIT THESE PANELS					PART NO.			DESCRIPTION	PART DIMENSIONS						EXTRACTION FORCE		
MOUNTING HOLE DIA.		PANEL THICKNESS			Black	White	V-0 Black *		A Length		B Head Height		C Head Diameter		N	Style	
in.	mm.	Min.	Max.	in.				mm.	in.	mm.	in.	mm.	in.	mm.			in.
PR Series																	
.201	5,1	.06	1,5	.10	2,5	9070	9071	9070F	PR 201-059	.18	4,5					1	
		.10	2,5	.14	3,5	9072	9073	9072F	PR 201-098	.22	5,6						
		.14	3,5	.18	4,5	9074	9075	9074F	PR 201-138	.26	6,5						
		.18	4,5	.22	5,5	9076	9077	9076F	PR 201-177	.30	7,5	.09	2,2	.35	9,0		245
		.22	5,5	.26	6,5	9078	9079	9078F	PR 201-217	.34	8,5						
		.26	6,5	.30	7,5	9080	9081	9080F	PR 201-256	.37	9,5						
		.30	7,5	.34	8,5	9082	9083	9082F	PR 201-295	.41	10,5						
.232	5,9	.12	3,0	.16	4,0	9322	9323	9322F	PR 232-118	.25	6,3	.11	2,7	.47	12,0	245	
.240	6,1	.10	2,5	.16	4,0	9084	9085	9084F	PR 240-098	.24	6,0	.10	2,5			294	
		.14	3,5	.22	5,5	9324	9325	9324F	PR 240-138	.32	8,0	.12	3,0				

Standard colors black and white.
*Black nylon 6/6 UL 94V-0.



STYLE 1



- Designed for **fast and easy installation with no tools** - just fingertip pressure required.
- Simply place rivet into the hole and press down on the head to fasten; legs expand to securely fasten components.
- To release, simply pull up on rivet head section.
- Round head provides a clean, finished look.
- Part Description Key: PR X-Y where X = Mounting Hole Diameter (inches) and Y = minimum Panel Thickness (inches).
- Standard Material: Nylon 6. Nylon 6/6 UL 94V-0 available by special order, consult Heyco.
- Standard Pack - 1,000/bag.
- See Quick Specs on page 31.

HEYClip™ Heat Resistant Snap Rivets

WILL FIT THESE PANELS					PART NO.			DESCRIPTION	PART DIMENSIONS						EXTRACTION FORCE	
MOUNTING HOLE DIA.		PANEL THICKNESS			Tan Nylon 4/6 UL94V-2	Tan Nylon 4/6 UL94V-2	UL94V-2		A Length		B Head Height		C Head Diameter		N	Style
in.	mm.	Min.	Max.	in.				mm.	in.	mm.	in.	mm.	in.	mm.		
PR Tan Series																
.122	3,1	.04	1,0	.08	2,0	9028H		PR 122-039 HR Tan	.14	3,5						2
		.08	2,0	.12	3,0	9030H		PR 122-079 HR Tan	.18	4,5						
		.12	3,0	.16	4,0	9032H		PR 122-118 HR Tan	.22	5,6	.06	1,6	.25	6,4	78	
		.16	4,0	.19	5,0	9034H		PR 122-157 HR Tan	.26	6,5						
		.22	5,5	.26	6,5	9038H		PR 122-217 HR Tan	.32	8,0						
.142	3,6	.05	1,2	.08	2,1	9044H		PR 142-047 HR Tan	.14	3,5						1
		.08	2,1	.12	3,0	9046H		PR 142-083 HR Tan	.18	4,5						
		.11	2,7	.14	3,6	9048H		PR 142-106 HR Tan	.20	5,0	.06	1,6	.25	6,4	118	
		.12	3,0	.16	4,0	9050H		PR 142-118 HR Tan	.22	5,6						
.161	4,1	.10	2,5	.14	3,5	9058H		PR 161-098 HR Tan	.20	5,0					1	
		.14	3,5	.18	4,5	9060H		PR 161-138 HR Tan	.24	6,0						
		.18	4,5	.22	5,5	9062H		PR 161-177 HR Tan	.28	7,0	.07	1,8	.32	8,0		196
		.22	5,5	.26	6,5	9064H		PR 161-217 HR Tan	.32	8,0						
		.30	7,5	.34	8,5	9068H		PR 161-295 HR Tan	.39	10,0						

Standard color tan (beige).

**ALL NEW
PRODUCTS!**



- Molded from Nylon 4/6 94V-2 - **heat resistant to 266°F (130°C)**.
- Automotive **tan** (beige) color.
- Designed for fast and easy installation with no tools - just fingertip pressure required.
- Simply place rivet into the hole and press down on the head to fasten; legs expand to securely fasten components.
- Part Description Key: PR X-Y where X = Mounting Hole Diameter (inches) and Y = minimum Panel Thickness (inches).
- Standard Pack - 1,000/bag.

Material: Nylon 4/6
Flammability Rating: 94V-2
Temperature Range: -4°F (-18°C) to 266°F (130°C)

Quick
Specs