

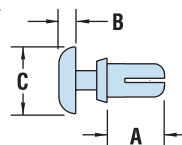


## HEYClip™ Snap Rivets

- Designed for **fast and easy installation with no tools** - just fingertip pressure required.
- Simply place rivet into the hole and press down on the head to fasten; legs expand to securely fasten components.
- To release, simply pull up on rivet head section.
- Round head provides a clean, finished look.
- Part Description Key: PR X-Y where X = Mounting Hole Diameter (inches) and Y = minimum Panel Thickness (inches).
- Standard Material: Nylon 6. Nylon 6/6 UL 94V-0 available by special order, consult Heyco.
- Standard Pack - 1,000/bag.

WILL FIT THESE PANELS				PART NO.			DESCRIPTION	PART DIMENSIONS						EXTRACTION FORCE			
MOUNTING HOLE DIA.		PANEL THICKNESS		Black	White	V-0 Black *		A Length		B Head Height		C Head Diameter		N	Style		
in.	mm.	Min. in.	Max. mm.	in.	mm.	in.	mm.	in.	mm.	in.	mm.	in.	mm.				
<b>PR Series</b>																	
.083	2,1	.02	0,6	.05	1,2	9296	9297	9296F	PR 083-024	.10	2,4						
		.05	1,3	.08	2,0	9300	9301	9300F	PR 083-051	.13	3,2						
		.08	2,1	.11	2,8	9302	9303	9302F	PR 083-083	.16	4,0						
		.11	2,9	.14	3,6	9304	9305	9304F	PR 083-114	.19	4,8	.05	1,2	.17	4,2	29	2
		.15	3,7	.17	4,4	9306	9307	9306F	PR 083-146	.22	5,6						
		.17	4,4	.20	5,0	9308	9309	9308F	PR 083-173	.25	6,4						
.102	2,6	.04	1,0	.08	2,0	9020	9021	9020F	PR 102-039	.13	3,2						
		.08	2,0	.12	3,0	9022	9023	9022F	PR 102-082	.17	4,2						
		.11	2,7	.14	3,6	9024	9025	9024F	PR 102-106	.19	4,8						
		.13	3,4	.17	4,3	9026	9027	9026F	PR 102-134	.22	5,6	.06	1,4	.20	5,0	49	2
		.17	4,3	.21	5,2	9310	9311	9310F	PR 102-169	.25	6,4						
		.20	5,1	.24	6,0	9312	9313	9312F	PR 102-201	.28	7,2						
.122	3,1	.04	1,0	.08	2,0	9028	9029	9028F	PR 122-039	.14	3,5						
		.08	2,0	.12	3,0	9030	9031	9030F	PR 122-079	.18	4,5						
		.12	3,0	.16	4,0	9032	9033	9032F	PR 122-118	.22	5,6						
		.16	4,0	.19	5,0	9034	9035	9034F	PR 122-157	.26	6,5						
		.20	5,0	.24	6,0	9036	9037	9036F	PR 122-197	.30	7,5						
		.22	5,5	.26	6,5	9038	9039	9038F	PR 122-217	.32	8,0	.06	1,6	.25	6,4	78	2
		.26	6,5	.30	7,5	9040	9041	9040F	PR 122-256	.35	9,0						
		.30	7,5	.34	8,5	9042	9043	9042F	PR 122-295	.39	10,0						
		.45	11,5	.51	13,0	9314	9315	9314F	PR 122-453	.57	14,5						
		.81	20,5	.85	21,5	9316	9317	9316F	PR 122-807	.91	23,0						
.142	3,6	.05	1,2	.08	2,1	9044	9045	9044F	PR 142-047	.14	3,5						
		.08	2,1	.12	3,0	9046	9047	9046F	PR 142-083	.18	4,5						
		.11	2,7	.14	3,6	9048	9049	9048F	PR 142-106	.20	5,0						
		.12	3,0	.16	4,0	9050	9051	9050F	PR 142-118	.22	5,6	.06	1,6	.25	6,4	118	1
		.15	3,7	.18	4,6	9052	9053	9052F	PR 142-146	.24	6,0						
		.18	4,5	.22	5,5	9054	9055	9054F	PR 142-177	.28	7,0						
		.22	5,5	.26	6,5	9056	9057	9056F	PR 142-217	.32	8,0						
.161	4,1	.10	2,5	.14	3,5	9058	9059	9058F	PR 161-098	.20	5,0						
		.14	3,5	.18	4,5	9060	9061	9060F	PR 161-138	.24	6,0						
		.18	4,5	.22	5,5	9062	9063	9062F	PR 161-177	.28	7,0						
		.22	5,5	.26	6,5	9064	9065	9064F	PR 161-217	.32	8,0	.07	1,8	.32	8,0	196	1
		.26	6,5	.30	7,5	9066	9067	9066F	PR 161-256	.35	9,0						
		.30	7,5	.34	8,5	9068	9069	9068F	PR 161-295	.39	10,0						
		.35	9,0	.41	10,5	9318	9319	9318F	PR 161-354	.47	12,0						
.49	12,5	.55	14,0	9320	9321	9320F	PR 161-492	.61	15,5								

Standard colors black and white.  
\*Black nylon 6/6 UL 94V-0.



STYLE 1



STYLE 2



Quick Specs

Material	Nylon 6 UL V-2
Flammability Rating	94V-2
Temperature Range	-.4°F (-18°C) to 185°F (85°C)