

**KEY FEATURES**

- Switching Power Module for PCB Mountable
- Fully Encapsulated Plastic Case
- Universal Input Range 90-264VAC, 50 / 60 Hz
- No-Load Watts < 0.1W
- Ultra Compact Size: 1.5" x 1.0" x 0.75" Inches
- Isolation Class II
- CE, CB, UL Approval
- 3-Years Product Warranty


**ELECTRICAL SPECIFICATIONS**

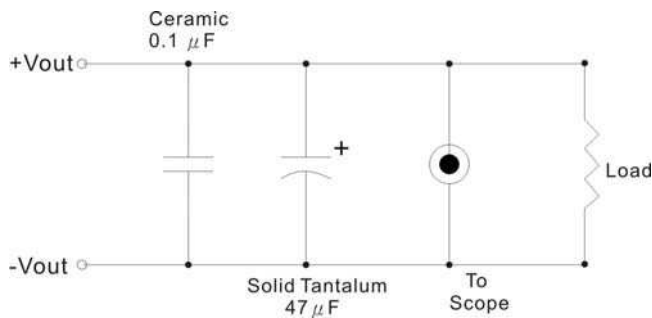
Model No. ( Single Output )	AVC-3.3S	AVC-5S	AVC-12S	AVC-15S	AVC-24S
Max Output Wattage (W)	13.2W	15W			
Input	Voltage				
	90-264 VAC or 120-370 VDC				
	Frequency (Hz)				
	50 / 60 Hz				
	Current (Full load)				
	315 mA max. (115 VAC) / 195 mA max. (230 VAC)				
Inrush Current (<1ms) (Note 4.)					
25 A max. (115 VAC) / 45 A max. (230 VAC)					
Leakage Current					
0.25 mA max. (at <240 VAC).					
External Fuse (mandatory)					
2 A slow blow type					
Output	Voltage (V.DC.)				
	3.3V	5V	12V	15V	24V
	Voltage Accuracy				
	±2%				
	Current (mA) max				
	4000	3000	1250	1000	625
	Line Regulation (LL-HL) (typ.)				
	±0.5%				
	Load Regulation (10-100%) (typ.)				
	±1%.				
Minimum Load					
0%					
Maximum Capacitive Load					
Pending					
Ripple & Noise (typ.)					
100mV (Vp-p)					
100mV (Vp-p)					
120mV (Vp-p)					
150mV (Vp-p)					
240mV (Vp-p)					
Efficiency					
74%					
80%					
83%					
82%					
83%					
Hold-up Time					
Pending					
Protection	Over Power Protection				
	Hiccup technique, auto-recovery				
	Over Voltage Protection				
Zener diode clamp					
Short Circuit Protection					
Hiccup mode, indefinite (automatic recovery)					
Isolation	Input-Output (V.AC)				
4000V					
Environment	Operating Temperature				
	-40°C...+70°C ( with derating )				
	Storage Temperature				
	-40°C...+85°C				
	Temperature Coefficient				
±0.02%/°C					
Humidity					
95% RH					
MTBF					
>350,000 h @ 25°C (MIL-HDBK-217F)					
Physical	Dimension (L x W x H)				
	1.5 x 1.0 x 0.75 Inches ( 38.1 x 25.4 x 19.0 mm ) Tolerance ±0.5 mm				
	Case Material				
	Plastic resin with Fiberglass (flammability to UL 94V-0)				
Weight					
30 g (Pending)					
Cooling Method					
Free air convection					
Safety	Agency Approvals				
CE, UL, cUL (Pending)					
EMC	EMI (Conducted & Radiated Emission)				
	EN 55022 class B (Pending)				
EMS (Noise Immunity)					
EN 55024 (Pending)					

**NOTE**

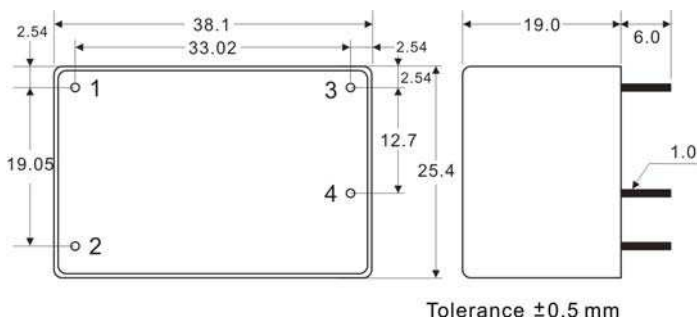
1. All specifications valid at normal input voltage, full load and +25°C after warm-up time unless otherwise stated.
2. Ripple & Noise are measured at 20MHz of bandwidth with 0.1uF & 47uF parallel capacitor.
3. It's necessary Varistor 14S471K at L / N input side in parallel.
4. It's necessary 10R / 15φ thermistor at L input side in series connection.

**OUTPUT NOISE**

The output noise is measured with 47μF tantalum capacitor and 0.1μF ceramic capacitor across output.



**MECHANICAL DIMENSION ( Top View )**



PIN#	Single
1	AC IN (L)
2	AC IN (N)
3	-DC OUT
4	+DC OUT

**DERATING**

