

PCI 1000/100/10Mbps Gigabit Ethernet Card

User Manual

Ver. 1.10

All brand names and trademarks are properties of their respective owners.

Overview

The Realtek 8169S/8110 Network Interface Card is a cost-effective 1000/100/10Mbps high speed Gigabit Ethernet Card. With Auto-Negotiation capability, the NIC automatically supports data transmission bandwidth from 10Mbps to 2000Mbps. This function smoothly and automatically switches drivers between 10Mbps, 100Mbps and 1000Mbps. The Network Interface Card is your best choose to improve network performance with the highest performance/price ratio.

Features

- Chipset: Realtek Gigabit Ethernet Controller
- Bus: PCI V2.2, 32/64-bit, 33/66MHz
- IEEE802.3, IEEE802.3u, and IEEE802.3ab compliant.
- Support for IEEE802.3x Full-Duplex flow control.
- Support IEEE802.1Q Virtual LAN (VLAN) Tag
- Complaint to PC97, PC98, PC99 and PC2001 standards
- Auto-Negotiation support for Auto-Detect 10/100/1000Mbps data rate and Full/Half-Duplex operation mode
- Support ACPI and PCI power management
- Automatic crossover support for crossover or regular cable
- Support Boot ROM function (optional)
- Support Wake on LAN function
- One RJ-45 Port
- Supports Drivers
 - ODI drivers Novell NetWare 4.x, 5.x
 - NDIS 4.0 drivers Windows NT4.0
 - NDIS 5.0 drivers Windows 98/98SE, Windows ME, Windows 2000, Windows XP
 - UNIX Drivers Linux Kernel 2.2x, Linux Kernel 2.4x, FreeBSD, Solaris 7 and 8

Packing List

Thank you for purchasing of this Interface card. The package should contain the following items:

- One PCI Network Interface Card
- One User Manual
- One Driver CD-ROM

Cabling

10Mbps

Category 3, 4, or 5 Twisted-Pair cable can be used for transmitting data at 10Mbps or 20Mbps bandwidth on 10BASE-T networks.

100Mbps

Only Category 5 Twisted-Pair cable (2 pair Category 5 TP cable required) can be used for transmitting data at

100Mbps or 200Mbps bandwidth on 100BASE-TX networks.

1000Mbps

Only Category 5 Twisted-Pair cable (4 pair Category 5 TP cable required) can be used for transmitting data at 1000Mbps or 2000Mbps bandwidth on 1000BASE-T networks.

Status LEDs

Four LEDs are located above the RJ-45 Port.

LED	Color	State	Indication
1000/ACT	Green	On Flashing	Connection at 1000Mbps Sending/Receiving Data
100/ACT	Green	On Flashing	Connection at 100Mbps Sending/Receiving Data

Driver Installation

Windows ME

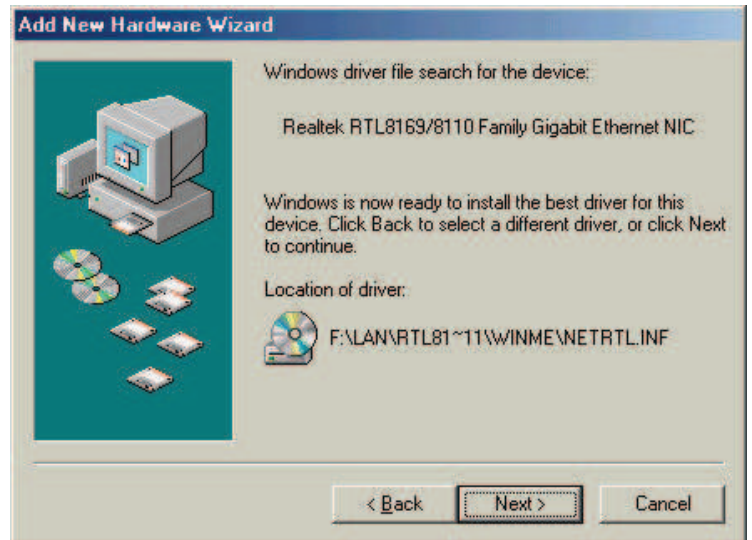
1. Turn on your computer. Plug the PCI Ethernet Card in your computer. The “Add New Hardware Wizard” will found. Then select “Specify the location of the driver (Advanced)” and click “Next” to continue.



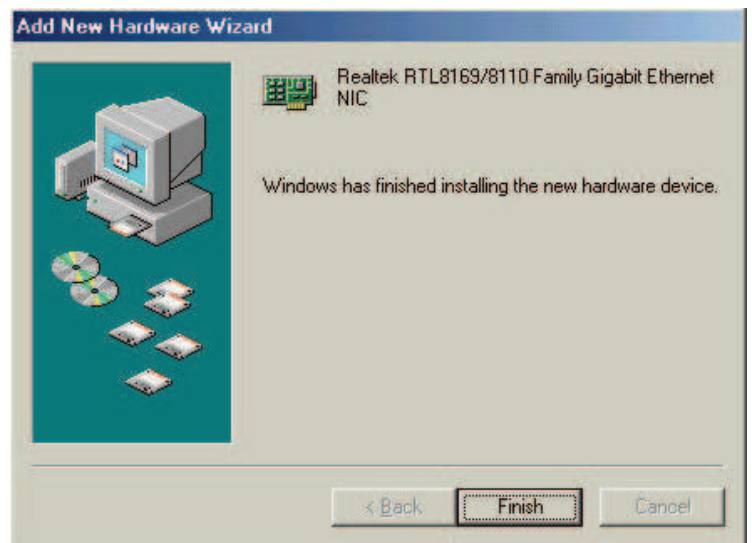
2. Select “Specify a location” and enter the path of the driver. Click “Next” to continue. device (Recommended)”, click “Browse” to enter “F:\LAN\Rtl8169_8169S(B)_8110S(B)\Win ME” here F is CD-ROM drive. And click “Next” to continue.



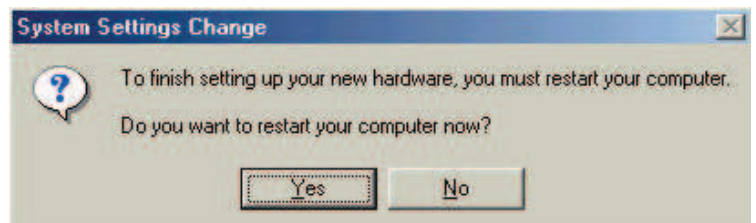
3. Windows will install the best drive for this device. Click “Next” to continue.



4. Click “Finish” to complete the installing.

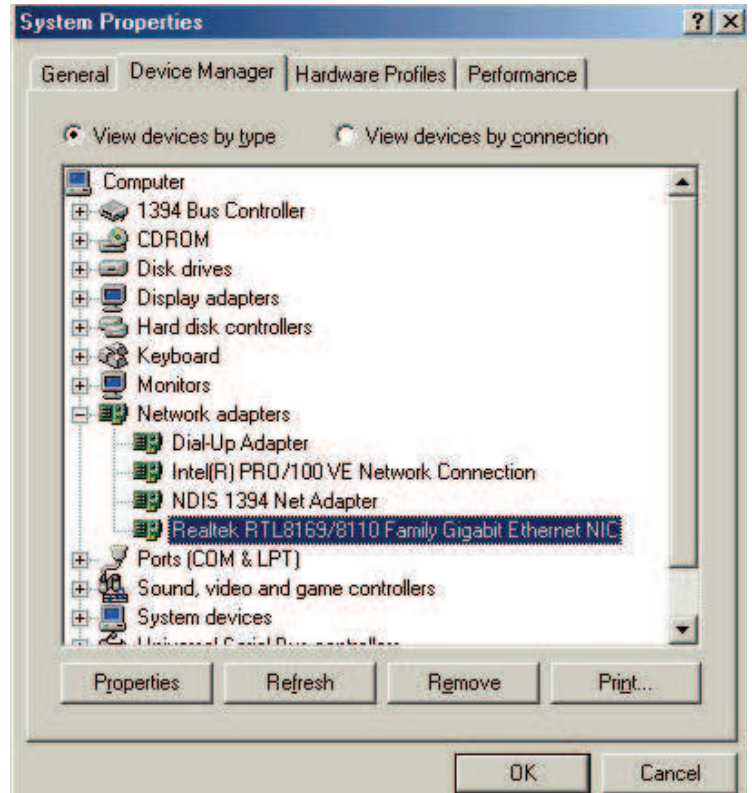


5. Click “Yes” to restart computer.



6. If the driver is installed successfully, you will see the following devices under System Properties:

“Realtek RTL8169/8110 Family Gigabit Ethernet NIC”



Windows 2000

The path of the driver **F:\LAN\Rtl8169_8169S(B)_8110S(B)\Win2K** where F is CD-ROM drive

Windows XP

The path of the driver **F:\LAN\Rtl8169_8169S(B)_8110S(B)\WinXP** where F is CD-ROM drive

Windows NT4.0

The path of the driver **F:\LAN\Rtl8169_8169S(B)_8110S(B)\WinNT** where F is CD-ROM drive