

1-Port USB Print Server

User Manual

Ver. 1.00

**All brand names and trademarks are properties of their
Respective owners.**

Features and Benefits

- Easily connects your USB printer to a network
- Allows multiple computers to share one USB printer on the network
- Print from any computer on your network
- LEDs indicate for Power status and Ethernet connection
- Supports MDI/MDIX auto crossover function (Auto-MDIX)
- Trouble free installation: Install utility for Windows XP, Bonjour search for Mac OS X
- Supports LPD/LPR printing on Windows and Mac OS

System Requirements

- Windows® 2000, XP/2003/Vista 32/64 bit
- Mac OS X

Package Contents

- 1 x 1- Port USB Printer Server
- 1 x User Manual
- 1 x Installation CD
- 1 x Power Adapter

Note: Contents may vary depending on market/region.

Hardware Description

Front Panel View



① USB Port ② Power LED ③ Ethernet LED

LED	Color	Status	Description
Power LED	GREEN	ON	Power ON
Ethernet LED	GREEN	ON	A valid connection
		BLINK	Sending/Receiving Packets

Rear Panel View



④ Ethernet Port ⑤ Power Adapter Port

⑥ Reset

Pressing the Reset button restores the USB Print Server to its original factory default settings

Note: To reset the USB Print Server, locate the reset button (hole) on the rear panel of the unit. With the USB Print Server powered on, use a paperclip to hold the button down for 10 seconds. Release the button and the USB Print Server will go through its reboot process. Wait about 30 seconds to access the USB Print Server.

Installing the USB Print Server Hardware

1. First connect an Ethernet cable to the USB Print Server's Ethernet port. Once the Ethernet cable is connected, connect the other end of the cable to your network.
2. Connect the included power supply to the USB Print Server's power adapter port. Once the USB Print Server has power, you will notice the USB Print Server's power LED light turns on.
3. Connect the USB cable from your USB printer to the USB port on the USB Print Server and make sure the USB printer is powered on.

Network Printer Wizard Installation - Windows For Windows® 2000

1. Locate the installation CD folder "X:\USB Print Server\Driver" and then double click "WIN2K_Setup.exe" file to install the driver.
2. Follow the on-screen instructions to complete the installation.

For Windows® XP/2003/Vista

1. Locate the installation CD folder "X:\USB Print Server\Driver"

and then double click “**XP_VS_Setup.exe**” file to install the driver.

2. Follow the on-screen instructions to complete the installation.

For Windows® XP-x64/Server 2003-x64

1. Locate the installation CD folder “X:\USB Print Server\Driver” and then double click “**XP64_Setup.exe**” file to install the driver,
2. Follow the on-screen instructions to complete the installation.

For Windows® Vista-x64

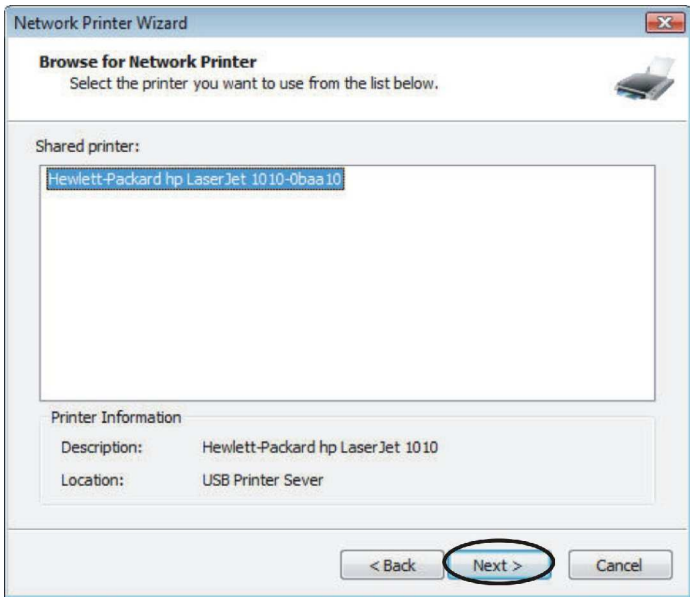
3. Locate the installation CD folder “X:\USB Print Server\Driver” and then double click “**VS64_Setup.exe**” file to install the driver.
4. Follow the on-screen instructions to complete the installation.

Using Your USB Printer on Windows

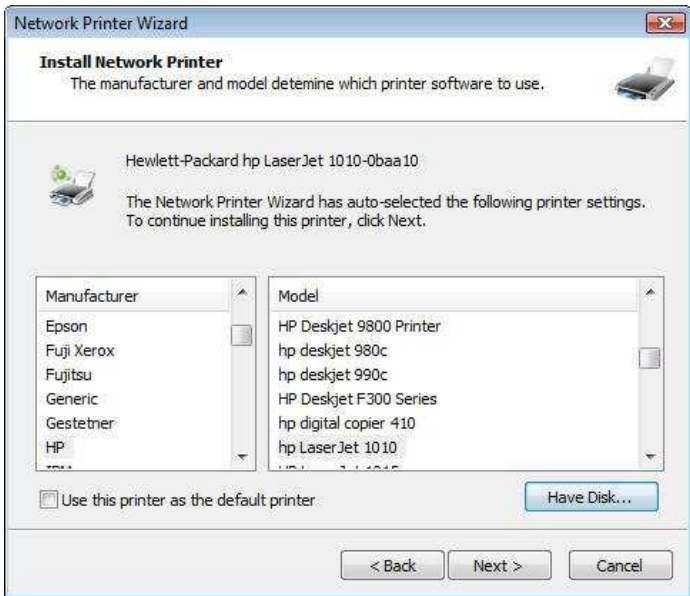
1. Now you can start setting up your printer. Please double click the shortcut icon of the **LaunchNetworkPrinterWizard.exe** file on the Desktop.
2. Please click on **Next** to continue when you see this welcome dialog box.



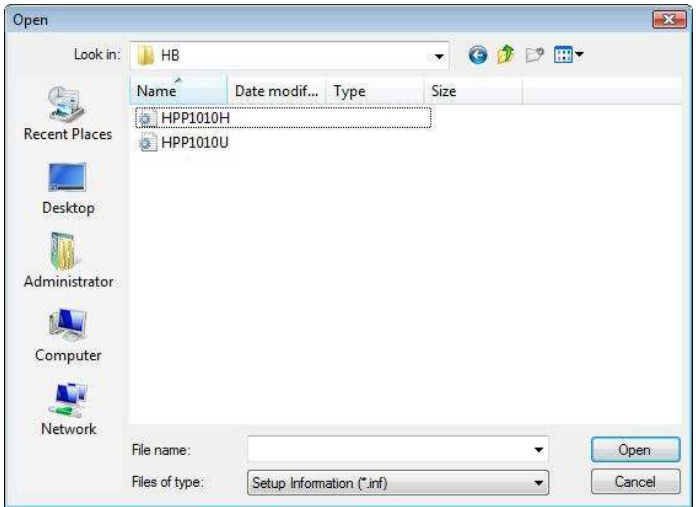
3. Please select the printer you would like to setup on this list and then click on **Next**. If you don't see any printers, please make your printer and USB Print Server is correctly powered on and connected to the network.



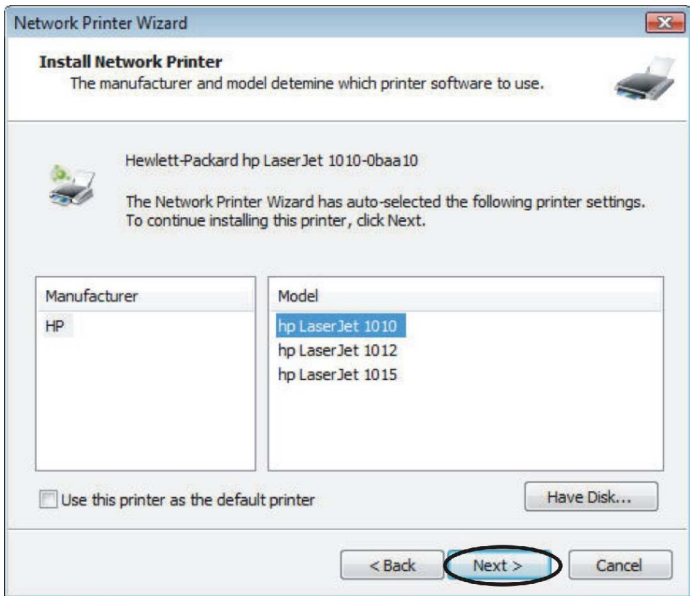
4. On the next dialog box, please select the driver from the list if it's there, and then click on the **Next** button. If you can't find the target printer's driver on the list, please insert the disk containing the printer's driver, click on the **Have Disk...** button.



5. You must browse to the folder that contains the driver for your printer and click on **OPEN** to use:



6. Then select the driver from the list again and click on the **Next** button. If you didn't select the correct driver, here is the chance for you to verify. Please click on **Have Disk...** again to re-select.



7. Once you have selected the correct driver from the list, please click on **Finish** button. The wizard will take a minute to setup the network printer for you.



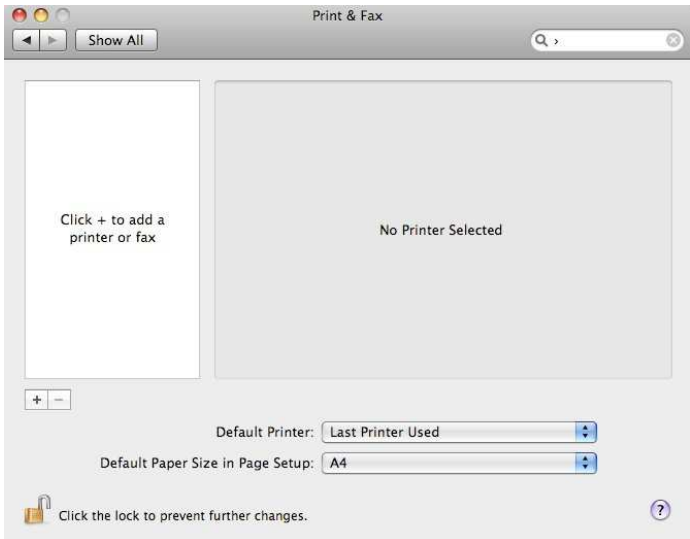
8. After the printer has been setup correctly, you can see it under **Control Panel > Printers**:



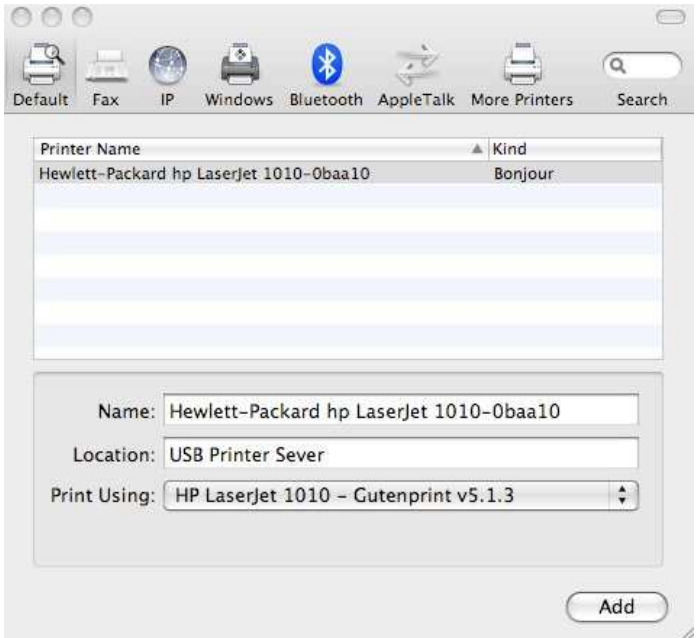
Note: The setup is a one-time thing, you do not have to run this process every time you want to print. However, of course, if you remove the network printer wizard, your printer setup will no longer work.

Using Your USB Printer on Mac OS X

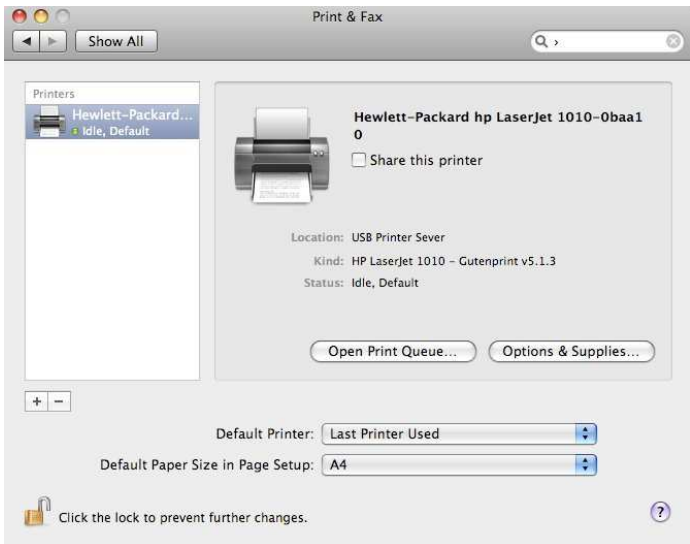
1. No software is needed on Macintosh systems. Simply open the Printer and Fax settings from your **System Preference** window. Click the plus (+) button to setup a new printer.



2. Select the printer you would like to setup from the list. If you don't see any printers, please make sure your printers and USB Print Server are correctly powered on and connected to the network. Once you have highlighted the printer to install, click on **Add** button to install it.



3. Once installation is done, you should be able to see this on your “**Print & Fax**” window, and now you are ready to print.



Note: The setup is a one-time thing, you do not have to run this process every time you want to print.

Installing the USB Print Server Client Utility

1. Locate the installation CD folder “X:\USB Print Server\Utility” and then double click “**setup.exe**” file to install the client utility.
2. Follow the on-screen instructions to complete the installation.

Web Management Interface

1. To access web management interface in the USB Print Server client utility, select the USB Print Server on the list, and click on the **Config** button.

For more information, please read the “USB Print Server Web Management.pdf” document in the installation CD.