

3.5” External SATA&PATA HDD Enclosure

USB 2.0 Interface

User Manual

Ver. 3.00

**All brand names and trademarks are properties of their
Respective owners.**

Features

- Chipset: JMicron JM20337
- Data Transfer Rate: USB 2.0: 480Mbps

Specification

- Suitable for hard disk type: 3.5” SATA or PATA HDD
- Interface: USB 2.0
- Power Supply: DC12V
- Size: 212.0 * 118.0 * 33.0 mm
- Connectors:
 - 1 x USB Type B Port
 - 1 x DC Jack
- Power On/Off Switch
- LED Status
 - On Power On
- Cooling Fan (Optional)

System Requirements

- Windows® 98, 98SE, Me, 2000, XP/2003 32/64bit, Mac OS 9.X
or newer
- One available USB port

Package Contents

- 1 x Enclosure
- 1 x User Manual
- 1 x Power Adapter
- 1 x USB Cable
- 1 x Driver CD

Assembling the 3.5” HDD Enclosure Kit

To begin using the 3.5” HDD Enclosure Kit, simply place your 3.5” Hard Disk Drive in the Enclosure Kit, and if required, install the software.

Hard Drive Installation

Install a hard disk drive in the Enclosure Kit by completing the following steps.

1. Disassemble the rear panel from the housing by removing one screw from each side of the housing with a screwdriver.



2. Push the bottom panel out of the housing.



3. Insert the IDE or SATA cable into the hard drive, and insert the control board power cable into the receptacle on the hard drive.



4. Turn the enclosure so that the bottom side is facing up and insert the first screw. Tighten the first screw ensuring that proper alignment is maintained while tightening. Repeat for the three screws.



5. Align the edges of the hard drive platform and carefully slide the assembled platform into the enclosure housing.



6. Fasten the rear panel to the enclosure housing by replacing the (2) screws removed in step 1.



7. The Enclosure Kit is now assembled and ready for connection to a computer.

Connecting the Enclosure Kit to a Computer

Complete the following steps to connect the enclosure to a host computer.

1. Connect the AC/DC power adapter, then turn on the power switch; ensure that the blue LED indicator is active.
2. Insert the USB connector into the corresponding port.
3. Insert the USB connector into an available port on the computer.

Software Installation

Windows® ME/2000/XP and Macintosh

Just insert the USB interface cable into computer, the hard disk will be recognized automatically.

Windows® 98/98SE

Windows® 98/98SE users must install the appropriate USB storage driver by completing the following:

1. Boot-up computer into Windows. Don't plug in the USB interface cable of the 3.5" HDD Enclosure to the USB connector of your computer.
2. Please insert the CD driver bound with 3.5" HDD Enclosure into your CD-ROM Drive.

3. At the Windows desktop, click **Start**, then **Run**.
4. Type **D:\JM20337\Setup.exe**, click **OK**.
(Change **D:** to match your CD-ROM drive letter)

5. When the driver installation is complete, click **“OK”**.



6. Power on the 3.5” HDD Enclosure and plug-in a USB cable to the USB connector port of the drive. Plug-in other end of the USB cable to the USB port of your computer.

7. Windows will automatically detect the drive and will use the pre-installed driver to setup the drive. Click My Computer to check if the device drive is properly detected and the drive letter is properly assigned (Drive E:)



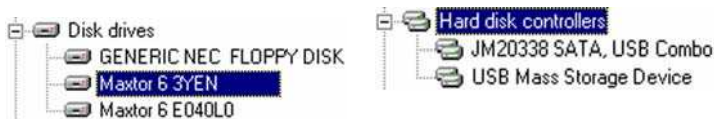
8. If the drive is properly detected, the Safe Remover icon will also

appear on the taskbar found on the button right side of the Windows desktop screen.



9. You can also verify that the installation was successfully by doing the following:
 - 1) Right-click the “My Computer” icon and select “Properties”.
 - 2) Select the “Device Manager” Tab.

In the Device Manger, we can find the new hard disk in the Disk drives. And also can find **JM20338 SATA, USB Combo** and **USB Mass Storage Device** in the Hard disk controllers.



Partition The External Hard Disk Drive

Using FDISK Under Windows® 98, 98SE/Me

FDISK is program to create one or more partitions of the hard disk, after the partition was built and formatted, data can be write to the hard disk.

To partition the external hard disk, you must execute **FDISK** under the MS-DOS mode under Windows® 98SE/Me, please follow the steps:

1. Boot-up the computer into Windows® 98SE/Me System. Plug

the external hard disk to computer, and make sure it is recognized.

2. Go into the MS-DOS mode by click on **Start ⇒ Programs ⇒ MS-DOS Prompt**.
3. At the DOS prompt, type **'FDISK'** and press **Enter**.
4. In the first screen of FDISK, answer the question: Do you want to enable large disk support?
Y if you want to create a partition larger than 2GB(FAT32).
N if you want to create a partition small than 2GB(FAT16).
5. The next screen is 'FDISK OPTIONS',

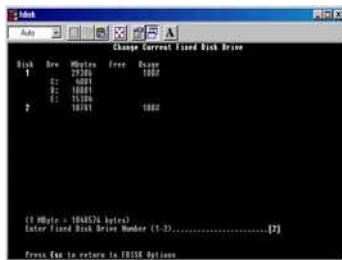
IMPORTANT: you must type 5 on this screen to change the current fixed disk drive, the default fixed drive set by FDISK is your internal hard disk, if you don't change it to the external hard disk, the data of internal hard disk will be destroyed.



Note: If the option 5 doesn't appear on this screen means the

external hard disk is not installed properly, please check with the software installation.

6. In the 'Change Current Fixed Disk Drive' screen, type the disk drive number that assigned to the external hard disk(usually, the external hard disk is the fixed disk drive number2).



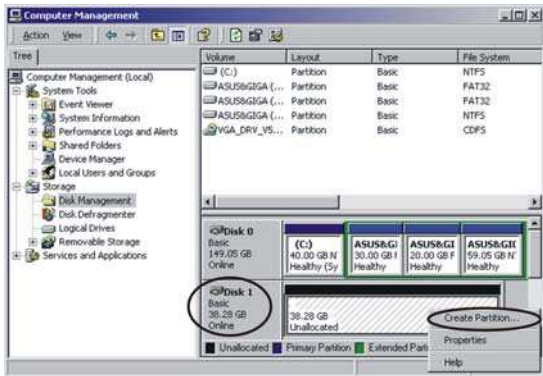
7. Back to 'FDISK OPTIONS' screen, type **4** to display the content of the fixed disk drive, check the content to make sure the current drive is the external hard disk
8. Now you can create(type **1**) or delete(type **3**) the partition of the external hard disk.
9. After you finish **FDISK**, re-boot computer to activate these changes.

Using FDISK Under Windows® 2000/XP

Note: The external hard disk can't work with 'Dynamic Disk' type. Do not upgrade the external hard disk to 'Dynamic Disk' type, always use it with 'Basic Disk' type.

1. To partition the external hard disk under Windows 2000 or Windows XP, please plug the external hard disk and make sure it is recognized, then.,
 - ① In Windows 2000: Click **Start** ⇒ **Settings** ⇒ **Control Panel** ⇒ **Administrative Tools** ⇒ **Computer Management** to open '**Computer Management**' window.
 - ② In Windows XP: Click **Start** ⇒ **Control Panel** ⇒ **Performance and Maintenance** ⇒ **Administrative Tools** ⇒ **Computer Management** to open '**Computer Management**' window.
2. Click on '**Disk Management**' on the left part of this window, all connected disk drives will be listed in the right part. Find out the largest number of Disk #, for example, on the below picture, Disk 1 is the largest number, and it is the external hard disk. On the right side of the Disk 1 is the status of the partitions of this disk drive, you can create a new or delete an exist partition by

right-click on this area. The next steps will describe how to create a new partition on this external hard disk.



Note:

If the hard disk in the hard disk kit is a whole new hard disk with out any partition, when the Disk Management is opened, a ‘Stop’ mark indicates this drive is an ‘Unknown’ type of disk(refer to the figure shown on right side). In this situation,

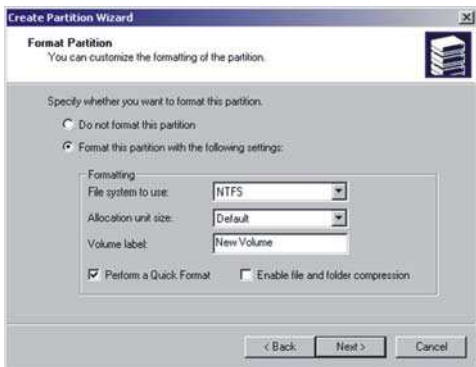
Windows system won’t allow you to create partition with this drive. In the meantime, you can:

- ① In Windows 2000: Window will start up the ‘Write Signature and Upgrade Disk Wizard’ immediately. You

can use this ‘Wizard’ to initial the hard disk to the ‘**Basic Disk**’ and can then create partition in the drive.

- ② In Windows XP: you can right-click on the ‘**Stop**’ mark, and then click ‘**Initialize disk**’ to initial the hard disk to the ‘**Basic Disk**’ type and can then create partition in the drive.
3. If the type of the hard disk drive is ‘**Dynamic**’, you must change it to the ‘**Basic**’. To do this, right-click on the status area(left area) of Disk 1, and then click ‘**Revert to Basic Disk**’ from the options. Wait for few seconds, the type of the hard disk drive will be changed to ‘**Basic**’ type.
4. To create a new partition in the external hard disk, right-click on the right area of Disk 1, click on ‘**Create Partition...**’, the ‘**Create Partition Wizard**’ appears, click **Next**.
5. Select ‘**Primary partition**’, click “**Next**”.
6. Specify the size that you want this partition to be, click “**Next**”.
7. Assign a drive letter for this partition, please use the default value, and click “**Next**”.
8. Refer to the figure shown below, select ‘**Format this partition with the following settings**’, choose the File System, and specify a name for the Volume Label, select ‘**Perform a Quick Format**’, then click “**Next**”.
9. Click “**Finish**”, now the formatting is proceed, after the process is

done, the **‘Disk Management’** window is changed as below.
Make sure the status of the partition is **‘Healthy’**.



10. Now, a partition is created in the external hard disk, you can write data to it, and if you want, one or more partition can be created in the same hard disk drive, just repeat the above steps.