

# **USB 3.0 Docking Station**

## **User Manual**

**Ver. 1.00**

**All brand names and trademarks are properties of their  
respective owners.**

# Contents:

<b>Chapter 1: Introduction .....</b>	<b>3</b>
1.1 Product Introduction .....	3
1.2 Features.....	3
1.3 System Requirements .....	5
1.4 Package Contents.....	5
1.5 Hardware Layout .....	5
<b>Chapter 2: Getting Started .....</b>	<b>9</b>
2.1 Driver Installation.....	9
2.1.1 Installation for Windows.....	9
2.1.2 Installation for Mac OS X.....	10
2.2 Hardware Installation .....	12
2.3 Verifying the installation.....	14
2.3.1 Verifying for Windows.....	14
2.3.2 Verifying for Mac OS X.....	14
2.4 Display Configuration .....	16

# Chapter 1: Introduction

## ***1.1 Product Introduction***

This USB 3.0 Docking Station enables multiple USB devices to be connected to the computer using a single USB 3.0 cable. Now with one simple cable connection to your computer you can have access to large screen display, stereo speakers, SD & MicroSD card reader (model dependent), external hard drive, optical disk drive, printer, USB keyboard and more.

Just plug in the one USB 3.0 cable from the USB 3.0 Docking Station to any USB 3.0 or USB 2.0 port on your laptop and your displays and accessories will be active in seconds. To undock, simply unplug the one cable and go.

## ***1.2 Features***

- Easy Installation
- An ideal solution for expanding the connectivity of Laptop, Ultrabook and Macbook

- Add up to 6 x USB 3.0 ports (model dependent) / Dual Display / Gigabit Ethernet Connection / Audio In & Out / SD & MicroSD card reader (model dependent) to your Desktop PC / Ultrabook / Macbook system with one click on driver installation
- Dual Display Support allow adding up two monitors for Extend / Mirror or Primary Display
- Compatible with SuperSpeed USB 3.0 and backwards compatible with USB 2.0 specification
- HDMI and DVI ports for two external monitors supports display resolutions up to 2048x1152 / 1920x1200
- Network port offers wired Gigabit Ethernet connectivity (also 10/100 capable)
- Dedicated slot for SD and MicroSD card reader (Support SD and MicroSD at a time)
- Audio out to support 2.1 & virtual 5.1 channel sound & a MIC jack

## **1.3 System Requirements**

- Windows® XP 32-bit, Vista/7/8/8.1 (32/64 bit); Mac OS X 10.6 or above
- Available USB port (USB 3.0 recommended)

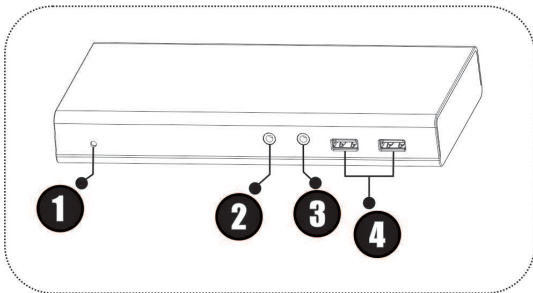
## **1.4 Package Contents**

- 1 x USB 3.0 Docking Station
- 1 x USB 3.0 Cable
- 1 x User Manual
- 1 x Driver CD
- 1 x Power Adapter

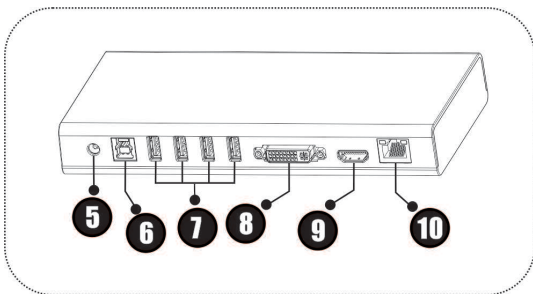
## **1.5 Hardware Layout**

### *USB 3.0 Docking Station without Memory Card Reader:*

*(1 x HDMI output, 1 x DVI output, 1 x RJ45, 1 x Mic In, 1 x Audio, 6 x USB 3.0 ports):*



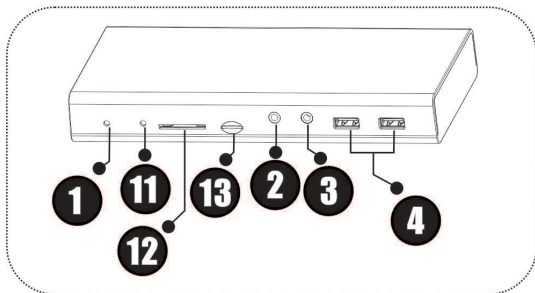
*Figure 1. Front Side*



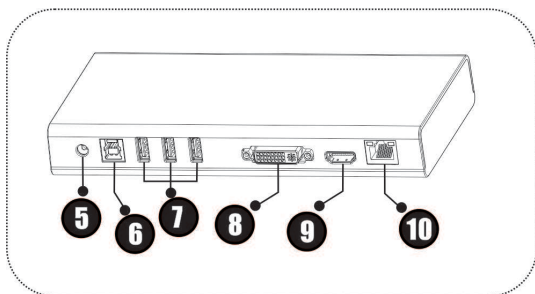
*Figure 2. Rear Side*

**USB 3.0 Docking Station with Memory Card Reader:**

*(1 x HDMI output, 1 x DVI output, 1 x RJ45, 1 x Mic In, 1 x Audio, 1 x SD card slot, 1 x Micro SD card slot, 1 x 5 USB 3.0 ports) :*



**Figure 3. Front Side**



**Figure 4. Rear Side**

1. **Power LED:** Lights up when the Docking Station is powered
2. **Audio output port:** Connect to stereo headphone or speaker
3. **Min In:** Connect to microphone
4. **USB 3.0 downstream port:** Connect USB peripherals
5. **Power jack:** Connect to the provided power adapter. The Docking Station always needs external power supply for operation
6. **USB 3.0 upstream port:** Connect to the USB 3.0 port of the host computer
7. **USB 3.0 downstream port:** Connect USB peripherals
8. **DVI output port:** Connect to a DVI monitor
9. **HDMI output port:** Connect to a HDMI monitor
10. **RJ45 port:** Connect to the Ethernet network via a network cable
11. **Memory card activity LED:** Steady green indicates the inserted memory card has been inserted. Flashing when memory card activity is in progress
12. **SD card slot:** Insert SD memory card
13. **MicroSD card slot:** Insert MicroSD memory card

# Chapter 2: Getting Started

## 2.1 Driver Installation

**Note:** DO NOT connect the Docking Station to your computer before you install the provided driver.

Follow the procedures below to install the driver and then connect the Docking Station to your system.

### 2.1.1 Installation for Windows

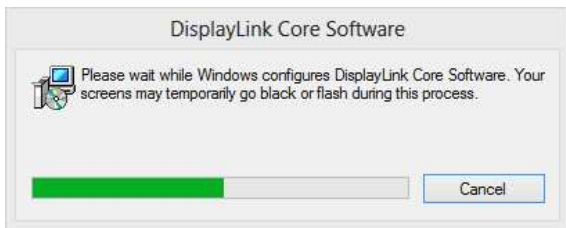
1. Insert the provided CD into your disk drive. The CD-ROM will start automatically. The following screen will show up and please click “**Install Driver**”.



\*Note: Actual image may vary

**Note:** If the install program doesn't run automatically, please locate and double-click on the **Autorun.exe** file in the CD to launch the install program.

2. Please wait while Windows configures DisplayLink Core Software. Your screens may temporarily go black or flashing during this process.



3. When finished, the installation screen will disappear and you will return to your desktop.

**Note:** On some machines, you may need to reboot before you can use USB 3.0 Docking Station.

## 2.1.2 Installation for Mac OS X

1. Insert the provided CD into your CD-ROM drive.

2. Double-click the “**U3 Dock**” disc icon, double-click package file “**mac.dmg**”, the following “U3 Dock” virtual disk will be appeared on the Desktop of your Mac OS X system. Then double click “Drivers” folder.



3. Select “**DisplayLink Software Installer**” to begin installing the DisplayLink Driver on your Mac.



4. Follow the instructions on screen to install the driver. After driver installation is complete, you must restart your computer.

## 2.2 Hardware Installation

1. Plug the power adapter into the power jack of the Docking Station.
2. Connect the USB 3.0 Docking Station:  
Plug the USB 3.0 cable into the USB 3.0 upstream port on the back of the Docking Station. Then a pop-up message will appear in the notification area indicating the installation is complete.



\* Actual strings depend on your operation system. This screen shot is from Windows 7 and might vary slightly for each operating system.

3. Connecting Ethernet network device
  - Connect an Ethernet cable to the RJ45 port on the Docking Station
  - Connect the other end of the Ethernet cable to your network hub, switch or router
4. Connecting DVI/HDMI monitor
  - For DVI port: Use a DVI cable (not provided) to connect

the DVI port to a monitor equipped with DVI input jack

- For HDMI port: Use a HDMI cable (not provided) to connect the HDMI port to a monitor equipped with HDMI input jack

5. Connecting USB 2.0/USB 3.0 devices

Connect your USB devices to the USB 3.0 ports on the Docking Station. As long as one USB device is connected to the port and the connection works properly.

6. Connect speaker/headphone

Insert the plug to the green hole on the front of the Docking Station. To connect a microphone, insert the plug the pink hole on the front of the Docking Station.

7. To insert memory card

- For SD memory card: Gently insert a SD memory card, with the label side facing up, into the SD card slot on the front of the Docking Station
- For MicroSD memory card: Gently insert a MicroSD memory card, with the label side facing up, into the MicroSD slot on the front of the Docking Station

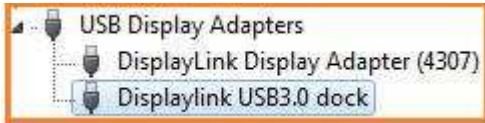
## 2.3 Verifying the installation

### 2.3.1 Verifying for Windows

1. Click on the “**Device Manager**” tab in the Windows Control Panel.

**Start > Control Panel > Device Manager**

2. In the **USB Display Adapters** group, an item named **Displaylink USB 3.0 dock** should be displayed.



Note: If there is a question or exclamation mark next to that item, then the driver is not properly installed. Please delete the item, select the **Delete the driver software for this device** option (if provided), unplug the Docking Station from your computer and then repeat the installation steps.

### 2.3.2 Verifying for Mac OS X

1. Choose About this Mac from the Apple menu.
2. Click on More Info...


3. In the Contents sidebar select USB from the Hardware section.
4. Scroll the list to reveal the USB 3.0 Docking Station information

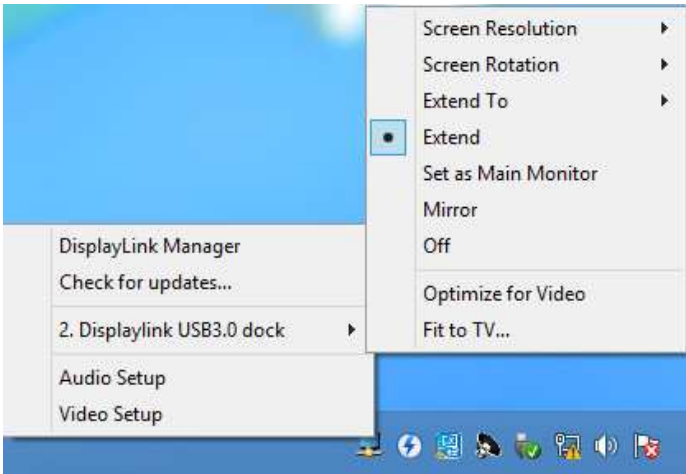
<ul style="list-style-type: none"> <li>▼ Hardware</li> <li>ATA</li> <li>Audio</li> <li>Bluetooth</li> <li>Camera</li> <li>Card Reader</li> <li>Diagnostics</li> <li>Disc Burning</li> <li>Ethernet Cards</li> <li>Fibre Channel</li> <li>FireWire</li> <li>Graphics/Displays</li> <li>Hardware RAID</li> <li>Memory</li> <li>PCI Cards</li> <li>Parallel SCSI</li> <li>Power</li> <li>Printers</li> <li>SAS</li> <li>SATA/SATA Express</li> <li>SPI</li> <li>Storage</li> <li>Thunderbolt</li> <li><b>USB</b></li> <li>▼ Network</li> <li>Firewall</li> <li>Locations</li> <li>Volumes</li> <li>WWAN</li> <li>Wi-Fi</li> </ul>	<div style="border: 1px solid gray; padding: 5px;"> <p><b>USB Device Tree</b></p> <ul style="list-style-type: none"> <li>USB 3.0 Hi-Speed Bus</li> <li>▼ USB 3.0 SuperSpeed Bus           <ul style="list-style-type: none"> <li>▼ USB3.0 Hub               <ul style="list-style-type: none"> <li>ADATA USB Flash Drive</li> <li>▼ USB3.0 Hub                   <ul style="list-style-type: none"> <li>USB Storage</li> <li>Displaylink USB3.0 dock</li> <li>USB Mass Storage Device</li> </ul> </li> </ul> </li> </ul> </li> <li>▼ USB Hi-Speed Bus               <ul style="list-style-type: none"> <li>▼ Hub                   <ul style="list-style-type: none"> <li>USB2.0 Hub                       <ul style="list-style-type: none"> <li>USB2.0 Hub</li> <li>FaceTime HD Camera (Built-in)</li> </ul> </li> </ul> </li> </ul> </li> <li>▼ USB Hi-Speed Bus               <ul style="list-style-type: none"> <li>▼ Hub                   <ul style="list-style-type: none"> <li>Apple Internal Keyboard / Trackpad</li> <li>▼ BRCM20702 Hub                       <ul style="list-style-type: none"> <li>Bluetooth USB Host Controller</li> </ul> </li> </ul> </li> </ul> </li> </ul> </div> <div style="border: 1px solid gray; padding: 5px; margin-top: 5px;"> <p><b>Displaylink USB3.0 dock:</b></p> <table style="width: 100%; border-collapse: collapse;"> <tr> <td style="padding: 2px;">Product ID:</td> <td style="padding: 2px;">0x4307</td> </tr> <tr> <td style="padding: 2px;">Vendor ID:</td> <td style="padding: 2px;">0x17e9 (DisplayLink (UK) Ltd.)</td> </tr> <tr> <td style="padding: 2px;">Version:</td> <td style="padding: 2px;">7.71</td> </tr> <tr> <td style="padding: 2px;">Serial Number:</td> <td style="padding: 2px;">SUNR360100028</td> </tr> <tr> <td style="padding: 2px;">Speed:</td> <td style="padding: 2px;">Up to 5 Gb/sec</td> </tr> <tr> <td style="padding: 2px;">Manufacturer:</td> <td style="padding: 2px;">DisplayLink</td> </tr> <tr> <td style="padding: 2px;">Location ID:</td> <td style="padding: 2px;">0x15220000 / 30</td> </tr> <tr> <td style="padding: 2px;">Current Available (mA):</td> <td style="padding: 2px;">900</td> </tr> <tr> <td style="padding: 2px;">Current Required (mA):</td> <td style="padding: 2px;">2</td> </tr> </table> </div>	Product ID:	0x4307	Vendor ID:	0x17e9 (DisplayLink (UK) Ltd.)	Version:	7.71	Serial Number:	SUNR360100028	Speed:	Up to 5 Gb/sec	Manufacturer:	DisplayLink	Location ID:	0x15220000 / 30	Current Available (mA):	900	Current Required (mA):	2
Product ID:	0x4307																		
Vendor ID:	0x17e9 (DisplayLink (UK) Ltd.)																		
Version:	7.71																		
Serial Number:	SUNR360100028																		
Speed:	Up to 5 Gb/sec																		
Manufacturer:	DisplayLink																		
Location ID:	0x15220000 / 30																		
Current Available (mA):	900																		
Current Required (mA):	2																		

## 2.4 Display Configuration

When USB 3.0 Docking Station is attached, an icon appears in the taskbar. This gives you access to the DisplayLink manager menu.

To use the DisplayLink Manager Menu

1. From the taskbar, click the DisplayLink icon 
2. A menu appears with several options. These are shown and described below.



- **Screen Resolution:** Click to select an available resolution. Note: This function is disabled in mirror mode, as the resolution is defined by the resolution of the primary monitor
- **Screen Rotation:** Rotates the screen according to the desired orientation
- **Extend to:** Extends the screen according to the desired orientation
- **Extend:** This is the default settings of the USB 3.0 Docking Station. This mode extends your desktop for easy viewing of multiple windows. The window will move off the primary display from the right side and enter the extended display from the left side
- **Set as Main Monitor:** Sets the extended screen as the main screen
- **Mirror:** Duplicates the primary monitor to the monitor which connects with the USB 3.0 Docking Station
- **Off:** Turns off the USB 3.0 Docking Station
- **Optimize for Video:** Optimize the video quality when playing back. Text may appear less clear when enabling
- **Fit to TV:** Adjusts the size of the desktop on the TV. Note: This function works only when one display is connected