

# **USB to 1-Port Serial Adapter**

## **User Manual**

**Ver. 1.00**

**All brand names and trademarks are properties of their  
respective owners.**

# Contents:

## Chapter 1: Introduction ..... 3

1.1 Product Introduction .....	3
1.2 Features.....	3
1.3 System Requirements .....	4
1.4 Package Contents.....	4

## Chapter 2: Getting Started..... 4

2.1 Driver Installation.....	4
2.1.1 Installation for Windows XP/Vista/7 .....	5
2.1.2 Installation for Mac OS X 10.5.x/10.6.x.....	6
2.2 Hardware Verify.....	7
2.2.1 Verifying for Windows XP/Vista/7 .....	7
2.2.2 Verifying for Mac OS X 10.5.x/10.6.x.....	8

# Chapter 1: Introduction

## ***1.1 Product Introduction***

This USB to 1-Port Serial Adapter provides one RS-232 Serial (DB9 male) connector via one standard USB port at a data transfer rate of up to 230Kbps. You can instantly enjoy connectivity with modem, PDA, POS, or other serial devices on your PC or Mac without the hassle of opening your computer case.

## ***1.2 Features***

- Compliant with the Standard Specification of USB 1.1 and 2.0
- Convert a standard 9-pin serial port to USB
- Supports various serial devices modems, PDAs, cellular phones, digital cameras, card readers, and more
- Easy Plug and Play Installation
- Supports the RS-232 Serial interface
- Up to 230Kbps data transfer rate
- No IRQ resource required
- Bus Powered – no separate power supply or battery required

## ***1.3 System Requirements***

- Windows® XP/Vista/7 (32/64 bit); Mac OS X 10.5 or later
- Available USB port

## ***1.4 Package Contents***

- 1 x USB to 1-Port Serial Adapter
- 1 x Driver CD
- 1 x User Manual

Note: Contents may vary depending on country/market.

# **Chapter 2: Getting Started**

## ***2.1 Driver Installation***

The following section shows you how to install the USB to 1-Port Serial Adapter driver on different operating systems.

**Important!** Do not connect the USB to 1-Port Serial Adapter to your PC before the install.

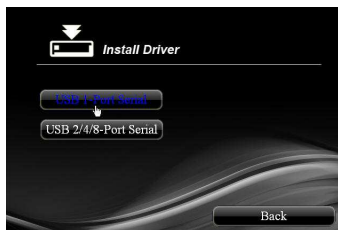
## 2.1.1 Installation for Windows XP/Vista/7

1. Insert the provided CD into your disk drive. The CD-ROM will start automatically. The following screen will show up and please click “**Install Driver**”.



**Note:** If the install program doesn't run automatically, please locate and double-click on the **Autorun.exe** file in the CD to launch the install program.

2. Please click “**USB 1-Port Serial**” to start the installation.



3. Follow the instructions on screen to install the driver.

## 2.1.2 Installation for Mac OS X 10.5.x/10.6.x

1. Insert the provided CD into your CD-ROM drive.
2. Double-click the “USB to Serial” disc icon, double-click “Drivers” folder.



3. Double-click “USB 1-Port Serial” folder, and then double click the “For Mac OS X 10.4/10.5.pkg” file (For Mac OS X 10.6 OS, please double click “For Mac OS X 10.6.pkg”) to launch the installer.



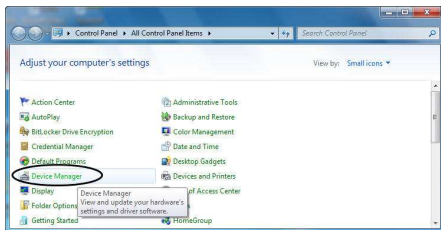
4. Follow the instructions on screen to install the driver. After driver installation is complete, you must restart your computer.

## ***2.2 Hardware Verify***

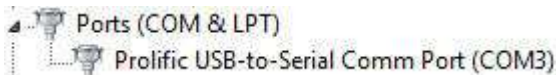
### **2.2.1 Verifying for Windows XP/Vista/7**

1. Click on the “**Device Manager**” tab in the Windows Control Panel.

**Start > Control Panel > Device Manager**



2. Entry “**Ports (COM & LPT)**” item, and you can read “**Prolific USB-to-Serial Comm Port...**” in the Device Manager.



## 2.2.2 Verifying for Mac OS X 10.5.x/10.6.x

1. Choose About this Mac from the Apple menu.
2. Click on More Info...
3. In the Contents sidebar select USB from the Hardware section.
4. Scroll the list to reveal the USB to 1-Port Serial Adapter information



