

# **ExpressCard SDXC Card Reader**

## **User Manual**

**Ver. 1.00**

**All brand names and trademarks are properties of their  
respective owners.**

# Contents:

<b>Chapter 1: Introduction .....</b>	<b>3</b>
1.1 Product Introduction .....	3
1.2 Features.....	3
1.3 System Requirements .....	4
1.4 Package Contents.....	4
<b>Chapter 2: Getting Started .....</b>	<b>4</b>
2.1 Hardware Installation .....	4
2.2 Driver Installation.....	5
2.2.1 Installation for Windows XP/Vista/7 .....	5
2.2.2 Installation for Mac OS X.....	5
2.3 Hardware Verify.....	6
2.3.1 Verifying for Windows XP/Vista/7 .....	6
2.3.2 Verifying for Mac OS X .....	7

# Chapter 1: Introduction

## ***1.1 Product Introduction***

This ExpressCard SDXC Card Reader design for Ultra high speed (UHS-I) SDXC cards. You can easily add SDXC card to your notebook with 35/54mm ExpressCard slot.

## ***1.2 Features***

- Compliant with ExpressCard Specification 1.0
- Compliant PCI Express Base Specification 1.1
- Compliant with SD Memory Card Specification 3.0
- Compliant with MultiMediaCard System Specification 4.2
- Compliant with SD Input / Output (SDIO) Card Specification 2.0
- Supports Ultra High Speed Type (UHS-I)
- Supports MMC, SD, SDHC and SDXC memory cards
- Supports RS-MMC, MiniSD, MiniSDHC, MicroSD, MicroSDHC and MicroSDXC memory cards (mechanical adapter needed)

## ***1.3 System Requirements***

- Windows® XP/Vista/7 (32/64 bit); Mac OS X 10.6.5 or above
- ExpressCard-enabled system with an available ExpressCard slot

## ***1.4 Package Contents***

- 1 x ExpressCard SDXC Card Reader
- 1 x User Manual
- 1 x Driver CD

Note: Contents may vary depending on country/market.

# Chapter 2: Getting Started

## ***2.1 Hardware Installation***

General instructions for installing the ExpressCard SDXC Card Reader are provided below. Since the design of computer vary, refer to your system's reference manual for further information, if needed.

1. Insert the ExpressCard SDXC Card Reader into the ExpressCard slot of the computer. Push the card into the slot gently, yet firmly

for a solid connection.

**Note:** Some ExpressCard slots will click when the ExpressCard is fully inserted into the slot.

2. If your system was powered off when you plugged in the ExpressCard SDXC Card Reader, turn it on and go to **Driver Installation**. Otherwise, go directly to **Driver Installation**.

## ***2.2 Driver Installation***

### 2.2.1 Installation for Windows XP/Vista/7

1. Insert the provided CD into your CD-ROM drive.
2. At the Windows desktop click Start, then Run.
3. Type D:\ExpressCard\JMB389\Windows\Setup.exe, then click OK. (Change D: to match your CD-ROM drive letter)
4. Follow the instructions on screen to install the driver. After driver installation is complete, you must restart your computer.

### 2.2.2 Installation for Mac OS X

1. Insert the provided CD into your CD-ROM drive.
2. Double-click the CD icon, then located to the

“.\ExpressCard\JMB389\Mac” folder and double-click the JMB38X.mpkg file to launch the install.

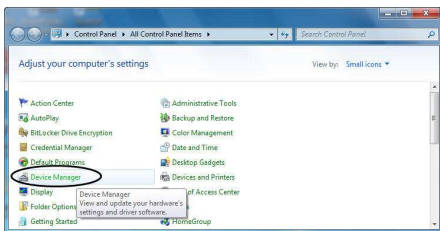
3. Follow the instructions on screen to install the driver.
4. Type D:\ExpressCard\JMB389\Setup.exe, then click OK. (Change D: to match your CD-ROM drive letter)
5. Follow the instructions on screen to install the driver. After driver installation is complete, you must restart your computer.

## 2.3 Hardware Verify

### 2.3.1 Verifying for Windows XP/Vista/7

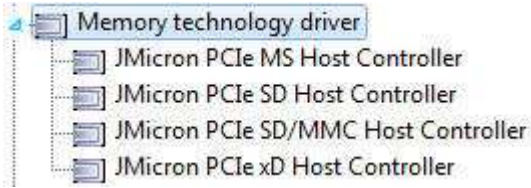
1. Click on the “**Device Manager**” tab in the Windows Control Panel.

**Start > Control Panel > Device Manager**



2. Entry “**Memory technology driver**” item, and you can read

“JMicron PCIe MS Host Controller”, “JMicron PCIe SD Host Controller”, “JMicron PCIe SD/MMC Host Controller” and “JMicron PCIe xD Host Controller” in the Device Manager.



### 2.3.2 Verifying for Mac OS X

1. Choose About this Mac from the Apple menu.
2. Click on More Info...
3. In the Contents sidebar select PCI Cards from the Hardware section.
4. Scroll the list to reveal the ExpressCard information

