

# **USB 3.0 2-Port ExpressCard**

## **User Manual**

**Ver. 3.00**

**All brand names and trademarks are properties of their  
respective owners.**

# Contents:

<b>Chapter 1: Introduction .....</b>	<b>3</b>
<b>1.1 Product Introduction.....</b>	<b>3</b>
<b>1.2 Features .....</b>	<b>4</b>
<b>1.3 System Requirements .....</b>	<b>5</b>
<b>1.4 Package Contents.....</b>	<b>5</b>
<b>1.5 Hardware Description .....</b>	<b>5</b>
<b>Chapter 2: Getting Started .....</b>	<b>6</b>
<b>2.1 Hardware Installation .....</b>	<b>6</b>
<b>2.2 Driver Installation .....</b>	<b>7</b>
<b>2.3 Hardware Verify .....</b>	<b>9</b>
<b>2.4 Driver Uninstall .....</b>	<b>10</b>
<b>Chapter 3: Troubleshooting Tips.....</b>	<b>11</b>

# Chapter 1: Introduction

## ***1.1 Product Introduction***

Super-Speed USB 3.0 interface is the next revolution in I/O interconnect standards that will deliver the bandwidth and features required by PCs, consumer electronics and communications devices. with 10 times faster throughput than USB 2.0 standard and backward compatible with current USB device features, USB 3.0 interface will be the trendy of IT technology.

This board is created to meet the need of the ExpressCard market where laptops, desktops, and docking stations could add two additional Super-Speed USB 3.0 ports via a single slim-type ExpressCard slot. It works up 5 Gbps for data transfer when connecting to USB 3.0 compliant peripherals, while maintaining compatibility with existing USB peripheral devices. Users will benefit from ExpressCard plug-n-play ease of use, which eliminates the need to open the chassis to add new features. With USB 3.0 ExpressCard, it makes you connect kinds of USB peripheral instantly and conveniently, such as external storage devices, MP3 players, and all other USB devices.

## ***1.2 Features***

- Fully compliant with ExpressCard Specification 1.0
- ExpressCard/34 form factor module
- Compliant with Universal Serial Bus 3.0 specification Revision 1.0
- Supports simultaneous operation of multiple USB 3.0, USB 2.0 and USB 1.1 devices
- Supports the following speed data rates as follows:  
Low-speed (1.5Mbps) / Full-speed (12Mbps) / High-speed (480Mbps) / Super-speed (5Gbps)
- Compliant with Intel's eXtensible Host Controller Interface (xHCI) Specification Revision 0.96
- Supports 2 downstream ports for all speeds
- Built-in DC Jack connector for receiving extra power to meet USB 3.0 +5V/900mA power output standard
- Hot-swapping feature allows you to connect/disconnect devices without powering down the system
- Support Windows® XP/Vista/7 (32/64 bit)

## ***1.3 System Requirements***

- Windows® XP/Vista/7 (32/64 bit)
- ExpressCard-enabled system with an available ExpressCard slot

## ***1.4 Package Contents***

- 1 x USB 3.0 2-Port ExpressCard
- 1 x Driver CD
- 1 x User Manual

Note: Contents may vary depending on country/market.

## ***1.5 Hardware Description***



## CAUTION:

Use only switching power adapter with following specifications:

- Switching power adapter (Optional) DC 5V, 2A  
Polarity: Outside negative voltage(-) & Inside positive voltage(+)  
1.3mm power DC jack for optional external power adapter



## Chapter 2: Getting Started

### ***2.1 Hardware Installation***

General instructions for installing the card are provided below. Since the design of system may vary, refer to your system's reference manual for further information, if needed.

Insert the Card into the ExpressCard slot of your system. Make sure it is inserted all the way in for a solid connection.

## 2.2 Driver Installation

1. Insert the provided CD into your disk drive. The CD-ROM will start automatically. The following screen will show up and please click “**Install Driver**”.



\*Note: Actual image may vary

**Note:** If the install program doesn't run automatically, please locate and double-click on the **Autorun.exe** file in the CD to launch the install program.

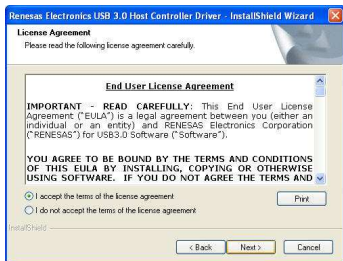
2. Please click “**720201/720202**” to start the installation.



\*Note: Actual image may vary

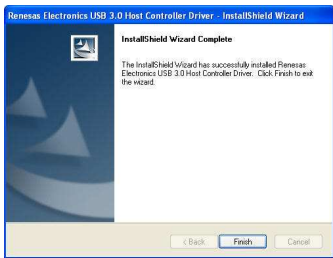
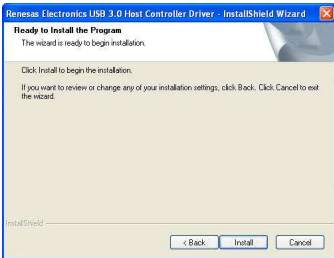
3. Click “**Next**” to continue.

Please check accept license agreement box, and click “**Next**” to continue.



4. Click “**Install**” to continue.

Click “**Finish**” to end of the driver installation steps.

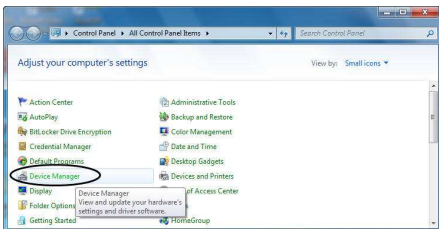


**Note: We do not provide USB 3.0 driver for Mac and Linux OSs.**

## ***2.3 Hardware Verify***

1. Click on the “**Device Manager**” tab in the Windows Control Panel.

**Start > Control Panel > Device Manager**



2. Entry “**Universal Serial Bus controllers**” item, and you can read

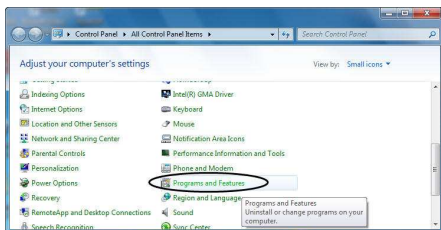
**“Renesas Electronics USB 3.0 Host Controller”** and **“Renesas Electronics USB 3.0 Root Hub”** in the Device Manager.



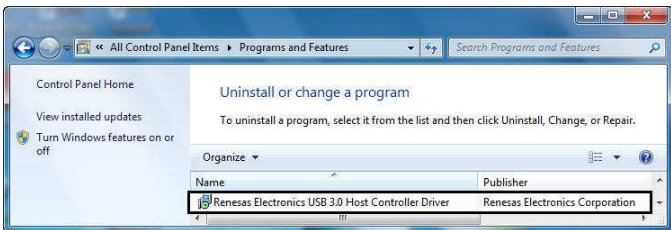
## ***2.4 Driver Uninstall***

1. Click on the **“Programs and Features”** tab in the Windows Control Panel.

**Start > Control Panel > Programs and Features**



2. Entry “**Uninstall or change a program**” page, and double click “**Renesas Electronics USB 3.0 Host Controller Driver**” to process driver uninstallation procedure.

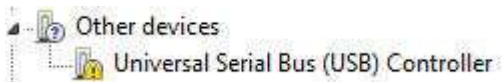


## Chapter 3: Troubleshooting Tips

- If card and devices connected to the computer do not seem to be working properly, please perform below basic troubleshooting steps:
  1. Check that all cables are correct and securely connected.
  2. Make sure USB device's power is turned on.
  3. Make sure the devices are getting enough power they require.
  4. Make sure there is no problem with the card installation.
- Computer failed to start after inserting the USB 3.0 ExpressCard.

Turn off the computer, remove the USB 3.0 ExpressCard, and try to restart the computer. If the computer starts successfully, it means that the card has not been inserted into laptop ExpressCard slot correctly. Please clean card connecting golden figure by rubber firstly, then try it again..

- How to deal with there is a yellow exclamation point on controller?



1. Please remove the card from laptop ExpressCard slot. Then reinstall USB 3.0 driver again. Before re-installing driver, please uninstall old one.
2. Please point on this device then right-click on the mouse. Selecting “**Update Driver**” to renew USB driver.
3. Please remove this card from system and shut down your computer. Before turning on the power, make sure of card’s hardware installation.
4. This exclamation point usually means there is a resource conflict with other device in your system. Please try to update your laptop’s BIOS.

- A message is displayed stating that not enough power can be given to the connected device.

If your USB device requests exceed 5V and 500mA specifications, please plug power adapter into card's DC Jack to provide stable power output. But the better way is using device self-power to satisfy it.

- Is it possible to connect current USB 1.1 or 2.0 devices to the USB 3.0 ExpressCard?

Yes it works. Device will not obtain the USB 3.0 speed, but USB 2.0/1.1.

Remark: Temporary degradation or loss of function or performance which requires operator intervention or system reset.

This was within the manufacturers performance criteria which allows system auto reset to initial state. Performance criterion C as defined in EN55024.