

# **VIA VT6212L USB 2.0 PCI Card**

## **User Manual**

**Ver. 1.00**

**All brand names and trademarks are properties of their  
Respective owners.**

## System Requirements

- Windows® 98SE, 2000, ME, XP(Pentium® or K6® - class processor -266 MHz or higher)
- Mac® OS 10.1 or Above
- 32MB of RAM
- Available PCI Slot
- CD-ROM Drive(for driver installation)

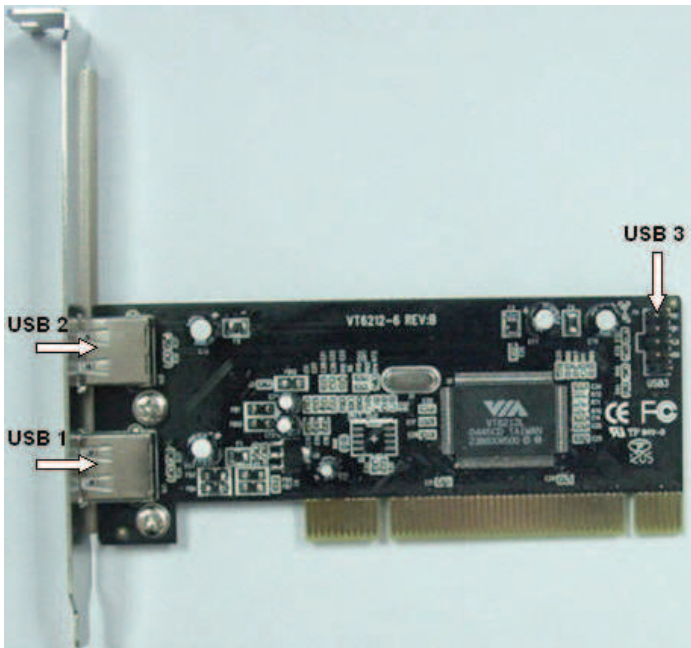
## Specifications

- VIA VT6212L chipset
- USB 1.1 and 2.0 Compliant
- Up to 480 Mbps (Megabits-Per-Second) Data Transfer Rate
- 40 Times Faster Than The USB 1.1
- Hot Swappable Plug-n-Play
- 2 External Type A USB 2.0 Ports
- 2 Type A USB 2.0 Ports by connecting an optional 2-Port USB cable to connector USB3

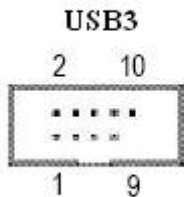
## Package Contents

- 1 x USB 2.0 PCI Card
- 1 x Driver CD
- 1 x User Manual

## Hardware Installation



Be careful with polarity of the USB connector(USB3). Check the pin assignment while you connect the USB cable.



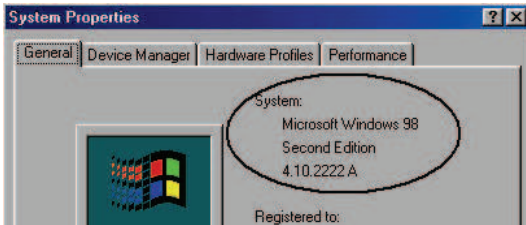
| Pin No. | Definition |
|---------|------------|
| 1       | Power      |
| 2       | Power      |
| 3       | USB3 D-    |
| 4       | USB4 D-    |
| 5       | USB3 D+    |
| 6       | USB4 D+    |
| 7       | GND        |
| 8       | GND        |
| 9       | No Pin     |
| 10      | NC         |

1. Remove your computer's cover.  
(Note: If necessary, consult your computer's manual for help in removing the cover)
2. Locate an available PCI slot and, if necessary, remove the expansion slot bracket.
3. Insert the USB 2.0 Card gently but firmly until the card is fully seated.
4. Fasten card to the computer case using a screw.
5. Replace the computer cover.

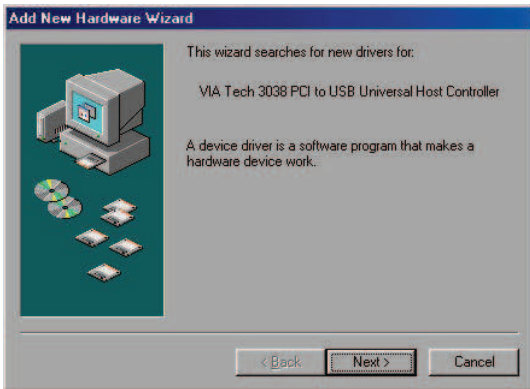
## Driver Installation

### Windows®98SE Installation

Make sure your version of Windows® is 98 Second Edition by check the “**Properties**” of “**My Computer**”.

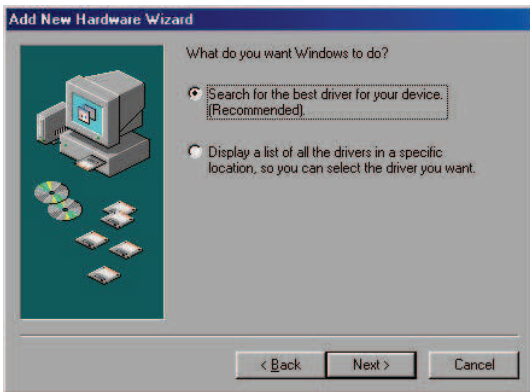


1. Windows will detect new hardware and start the “**VIA Tech 3038 PCI to USB Universal Host Controller**” driver search program. As Figure 1. Click “**Next**”.



**Figure 1**

2. Select **“Search for the best driver for your device”** in Figure 2. Click **“Next”**.



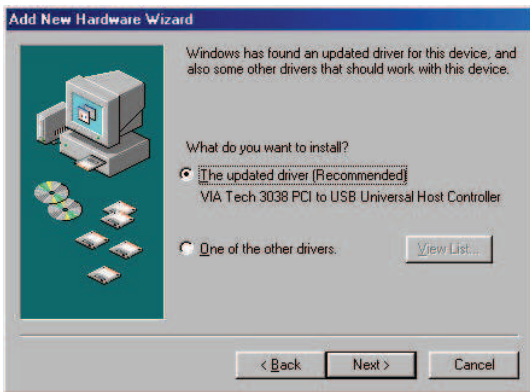
**Figure 2**

3. Don't select any location and click "**N**ext". As Figure 3



**Figure 3**

4. Select “**The updated driver(Recommended) VIA Tech 3038 PCI to USB Universal Host Controller**”. As Figure 4. Click “**Next**”.



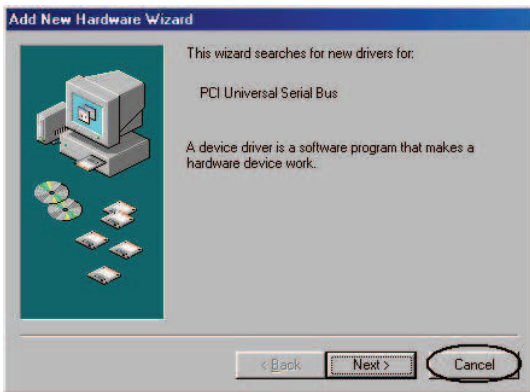
**Figure 4**

5. Click **“Next”** again to confirm the driver and begin installation. Please insert the disk labeled **“Windows 98 CD disk”**.

6. After driver installation finished, click **“Finish”**.

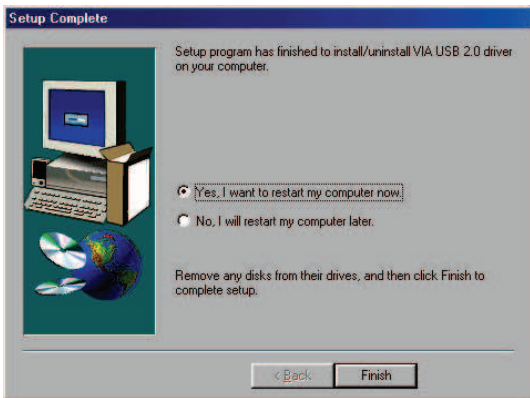
7. Next, you will see Windows find a **“VIA Tech 3038 PCI to USB Universal Controller”** device again. Repeat the above process for the second **“VIA Tech 3038 PCI to USB Universal Controller”**.

8. As **“PCI Universal Serial Bus”** driver search program shows up, as Figure 5. Click **“Cancel”** to cancel the driver installation for this device. This driver will be installed from the included Driver CD.



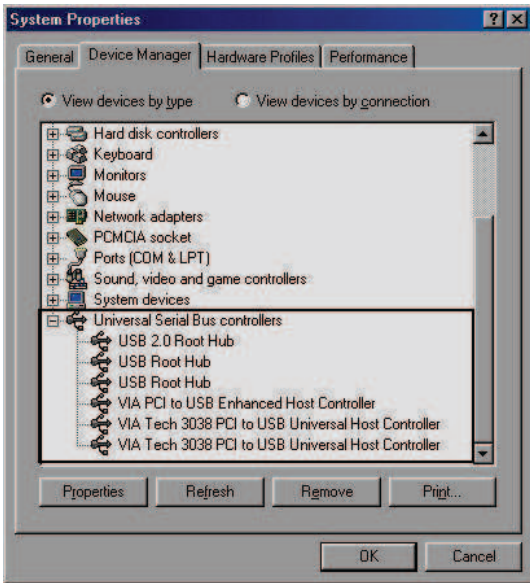
**Figure 5**

9. Insert the Driver CD into the CD-ROM drive of your computer. Browse to the VIA USB 2.0 Driver Folder “**PCI\_IO\Viausb20**” on the Driver CD, then double-click the installation file “**Setup.exe**”. Follow the on-screen instructions, then reboot when prompted. As Figure 6. This will automatically install the driver for the “**PCI Universal Serial Bus**” device found in step 8.



**Figure 6**

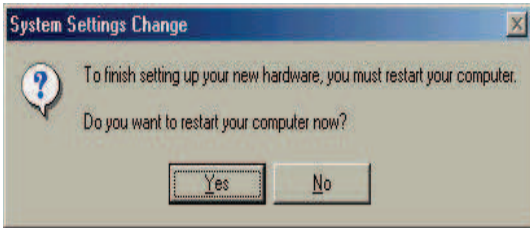
10. Once you have rebooted, your USB 2.0 Four Port PCI Card is ready to be used. If you open the Device Manager, you will see the newly installed devices. As Figure 7. To locate the Device Manager right click **“My Computer”** and select **“Properties”**, then the **“Device Manager”** tab.



**Figure 7**

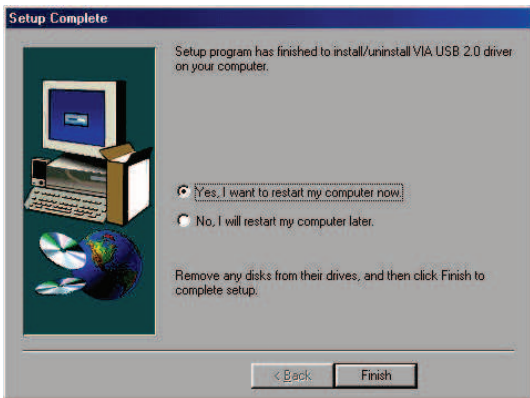
## **Windows® ME Installation**

1. Windows will detect the USB 2.0 Four Port PCI Card and automatically install drivers for all known USB devices. Follow the installation to restart the computer. As Figure 8.



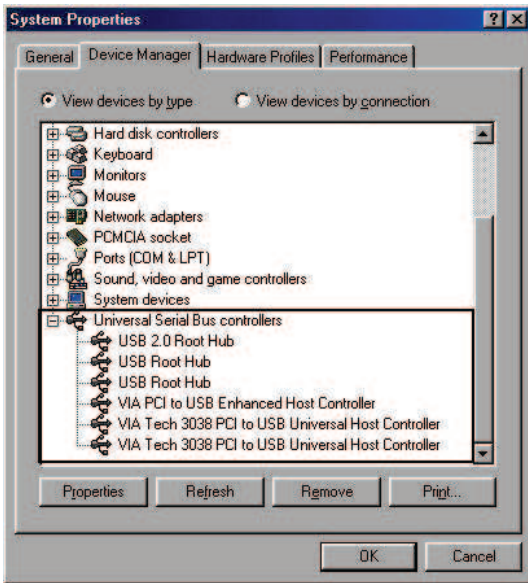
**Figure 8**

2. After you have rebooted, Please insert the Driver CD into the CD-ROM drive of your computer. Browse to the VIA USB 2.0 Driver Folder “**PCI\_IOViusb20**” on the Driver CD, then double-click the installation file “**Setup.exe**”. Follow the on-screen instructions, then reboot when prompted. As Figure 9. This will automatically install the driver for the “**PCI Universal Serial Bus**” device found in step 1.



**Figure 9**

3. Once you have rebooted, your USB 2.0 Four Port PCI Card is ready for operation. Open **Device Manager**, you will see the newly installed devices. As Figure 10



**Figure 10**

## **Windows® 2000 Installation**

Windows® 2000 operating system natively supports this USB 2.0 Four Port PCI Card.

- **No Drivers are necessary**

However, please ensure you have the latest Service Pack installed.

- **Windows® 2000 Service Pack 4 (or later)**

## **Windows® XP Installation**

Windows® XP operating system natively supports this USB 2.0 Four Port PCI Card.

- **No Drivers are necessary**

However, please ensure you have the latest Service Pack installed.

- **Windows® XP Service Pack 1 or later**

When you start the PC, the drivers are installed automatically by the Hardware Wizard.