

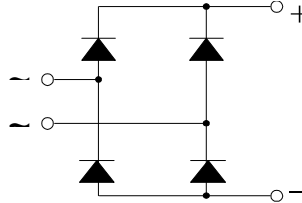
## Single Phase Rectifier Bridges

**PSBS 62**

**$I_{dAVM}$  = 52 A**  
 **$V_{RRM}$  = 800-1800 V**

Preliminary Data Sheet

$V_{RSM}$ V	$V_{RRM}$ V	Type
800	800	PSBS 62/08
1200	1200	PSBS 62/12
1400	1400	PSBS 62/14
1600	1600	PSBS 62/16
1800	1800	PSBS 62/18



Symbol	Test Conditions	Maximum Ratings
$I_{dAVM}$	$T_C = 100^\circ\text{C}$ , module	52 A
$I_{FSM}$	$T_{VJ} = 45^\circ\text{C}$ $t = 10$ ms (50 Hz), sine	550 A
	$V_R = 0$ $t = 8.3$ ms (60 Hz), sine	600 A
	$T_{VJ} = T_{VJM}$ $t = 10$ ms (50 Hz), sine	500 A
	$V_R = 0$ $t = 8.3$ ms (60 Hz), sine	550 A
$\int i^2 dt$	$T_{VJ} = 45^\circ\text{C}$ $t = 10$ ms (50 Hz), sine	1520 $\text{A}^2\text{s}$
	$V_R = 0$ $t = 8.3$ ms (60 Hz), sine	1520 $\text{A}^2\text{s}$
	$T_{VJ} = T_{VJM}$ $t = 10$ ms (50 Hz), sine	1250 $\text{A}^2\text{s}$
	$V_R = 0$ $t = 8.3$ ms (60 Hz), sine	1250 $\text{A}^2\text{s}$
$T_{VJ}$	-40 ... + 150	$^\circ\text{C}$
$T_{VJM}$	150	$^\circ\text{C}$
$T_{stg}$	-40 ... + 125	$^\circ\text{C}$
$V_{ISOL}$	50/60 HZ, RMS $t = 1$ min	2500 V ~
	$I_{ISOL} \leq 1$ mA $t = 1$ s	3000 V ~
$M_d$	Mounting torque (M5)	5 Nm
	Terminal connection torque (M5)	5 Nm
Weight	typ.	120 g

Symbol	Test Conditions	Characteristic Value
$I_R$	$V_R = V_{RRM}$ $T_{VJ} = 25^\circ\text{C}$	$\leq 0.3$ mA
	$V_R = V_{RRM}$ $T_{VJ} = T_{VJM}$	$\leq 5$ mA
$V_F$	$I_F = 150$ A $T_{VJ} = 25^\circ\text{C}$	$\leq 1.8$ V
• Package	For power-loss calculations only	0.8 V
$r_T$	$T_{VJ} = T_{VJM}$	8 $\text{m}\Omega$
$R_{thJC}$	per diode; DC current	1.45 K/W
	per module	0.36 K/W
$R_{thJK}$	per diode; DC current	1.87 K/W
	per module	0.47 K/W
$d_s$	Creeping distance on surface	10 mm
$d_A$	Creeping distance in air	9.4 mm
$a$	Max. allowable acceleration	50 $\text{m/s}^2$

### Features

- Low profile (overall height: 17 mm)
- Package with screw terminals
- Isolation voltage 3000 V~
- Planar glasspassivated chips
- Blocking voltage up to 1800 V
- Low forward voltage drop
- UL release applied, RoHS conform

### Applications

- Supplies for DC power equipment
- Input rectifiers for PWM inverter
- Battery DC power supplies
- Field supply for DC motors

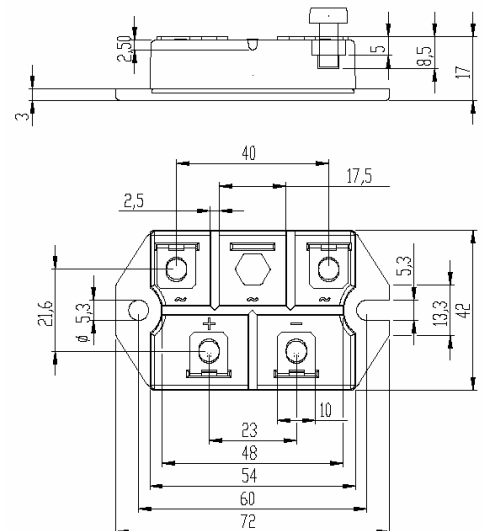
### Advantages

- Easy to mount with two screws
- Space and weight savings
- Improved temperature and power cycling capability

### Package, style and outline

Dimensions in mm (1mm = 0.0394")

Max. allowed screw-in depth: 8.5 mm !



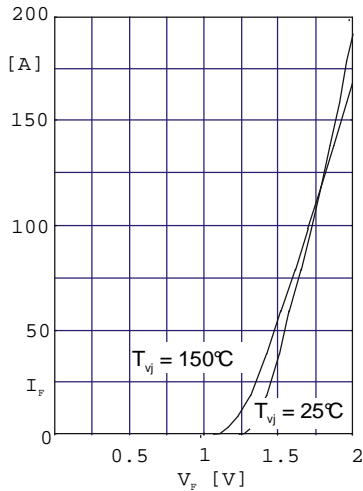


Fig. 1 Forward current versus voltage drop per diode

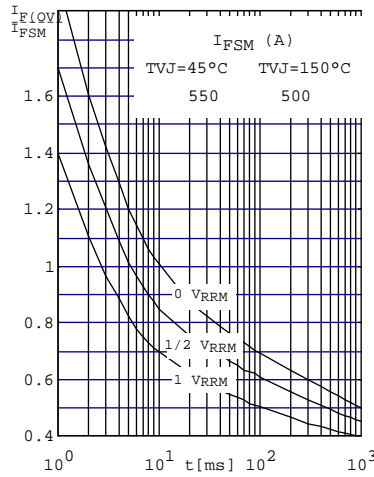


Fig. 2 Surge overload current per diode  $I_{FSM}$ : Crest value.  $t$ : duration

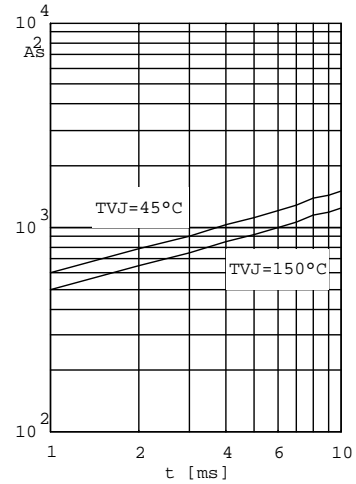


Fig. 3  $\int i^2 dt$  versus time (1-10ms) per diode (or thyristor)

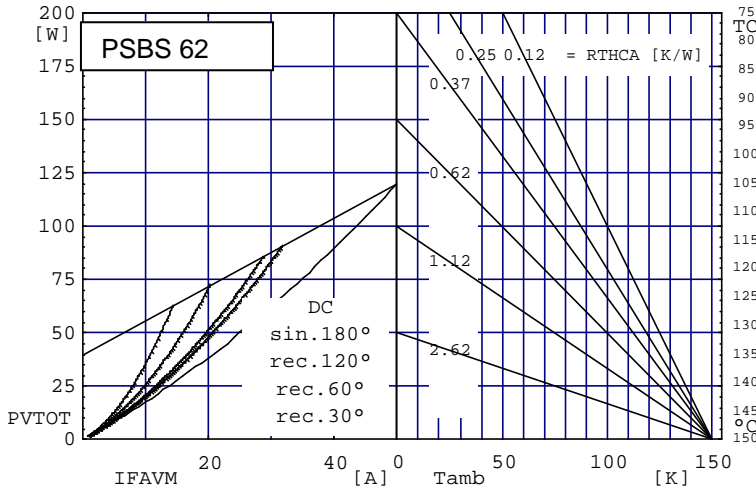


Fig. 4 Power dissipation versus direct output current and ambient temperature

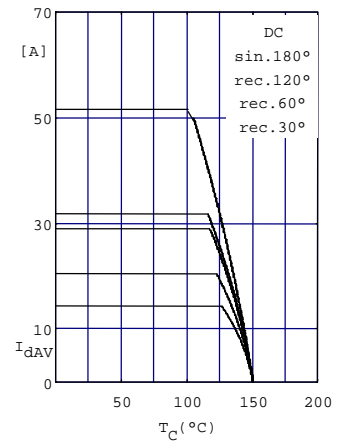


Fig.5 Maximum forward current at case temperature

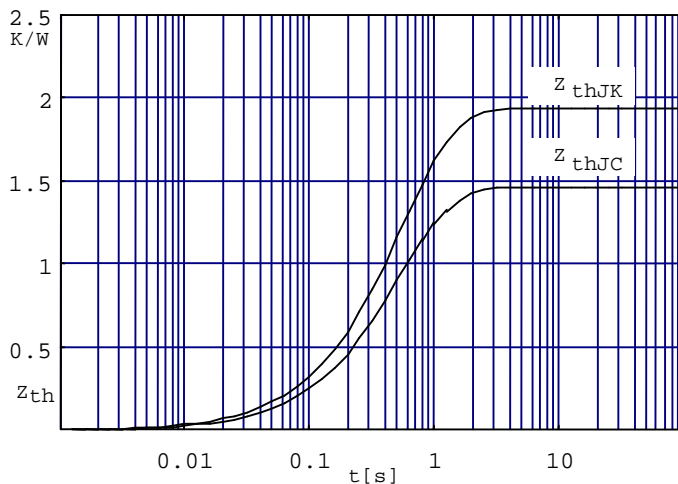


Fig. 6 Transient thermal impedance per diode (or thyristor), calculated