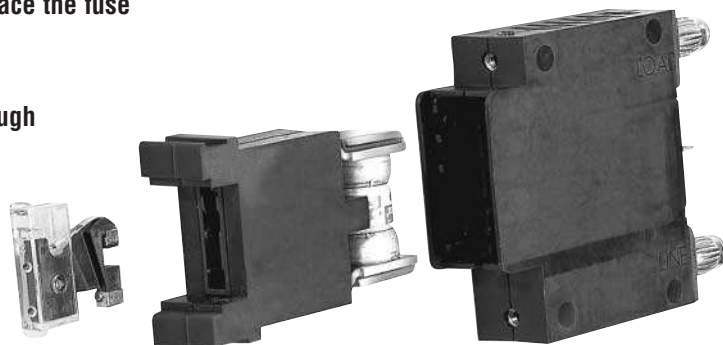


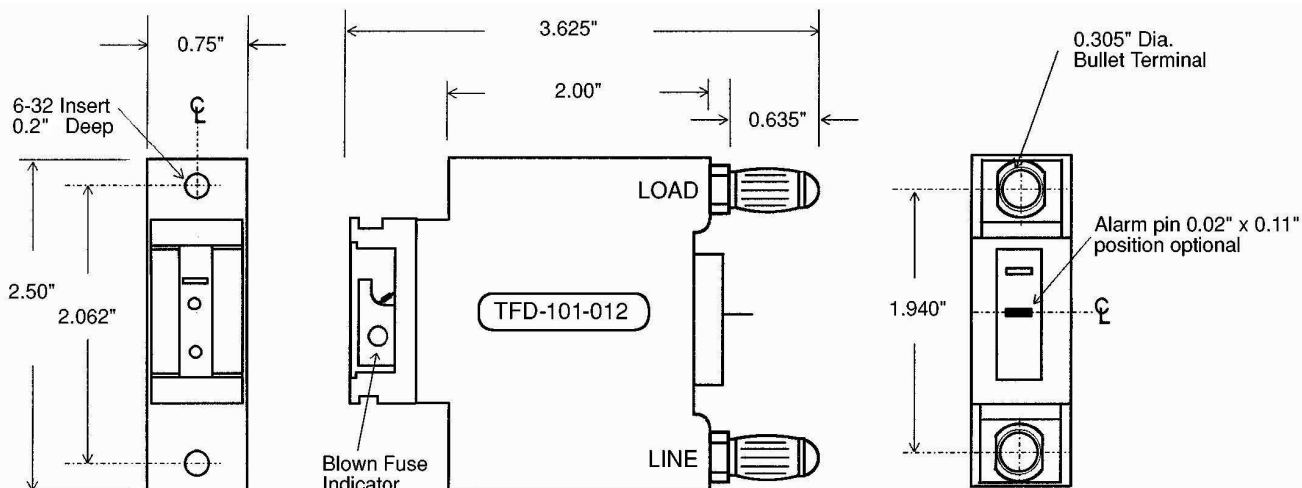


TYPE: TFD-101 – 1 to 125 Amps, 80 Vdc

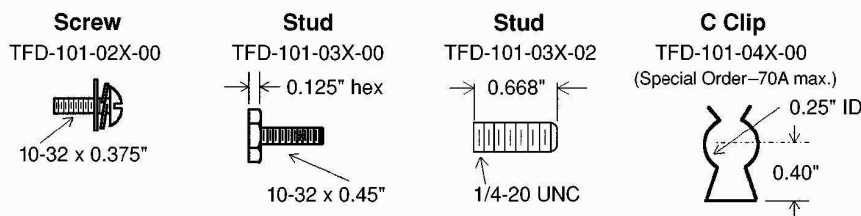
- Innovative pullout design eliminates need for tools to replace the fuse
- Bullet terminals standard for line and load connections
- Front access to fuse
- Alarm signalling circuit (visual and remote) activates through line (standard) or load (optional) terminals
- For use with fuse types: Littelfuse® TLS or Bussmann® TPS (not supplied)
- Thermoplastic housing material UL Rated 94V-0, 170°C
- Mounting hardware is not required if used with bullet terminals. For front panel mounting use 6-32 screws



Dimensional Data (for standard product TFD-101-012)



Optional Terminals



Click here for
[Optional internal wiring schematics](#)
Contact CSI for details

Specifications

Current Rating: 1-125 Amps

Voltage Rating: 80 Volts DC

UL Withstand Rating: 100,000 Amps

Switching: 1000 cycles @ 100% rated current
50 cycles @ 150% rated current
5 cycles @ 600% rated current

U.S. Patent No.: Des. 452,484

Agency Approvals

UL Recognized, File E122674

Fuses

For use with the following fuses:

- Littelfuse® type TLS up to 125A or Telpower® type TPS up to 70A fuses
- Alarm fuse type 0481.180HXL or GMT 18/100A

How To Order

TFD-101-XXX-XX

Options: Labels, Alarm Circuitry, etc.

Alarm Pin position:
1=Upper Pin, 2=Central Pin

Connection Type: 01=Bullet, 02=Screw, 03=Stud, 04=C Clip

Telecom Fused Disconnect
1 to 125 Amps single pole

*Application Note: The alarm circuit is not intended for precharging of capacitive circuits.
Alarm circuit 1 Amp maximum.*