



## TYPE ASB: 50 through 225 Amperes

### TYPE ASB: 50 mV

Catalog Number	AMP	Adjustable value for 50mV output
ASB-50-50	50	35A to 80A*
ASB-125-50	125	80A to 190A**
ASB-225-50	225	160A to 360A***

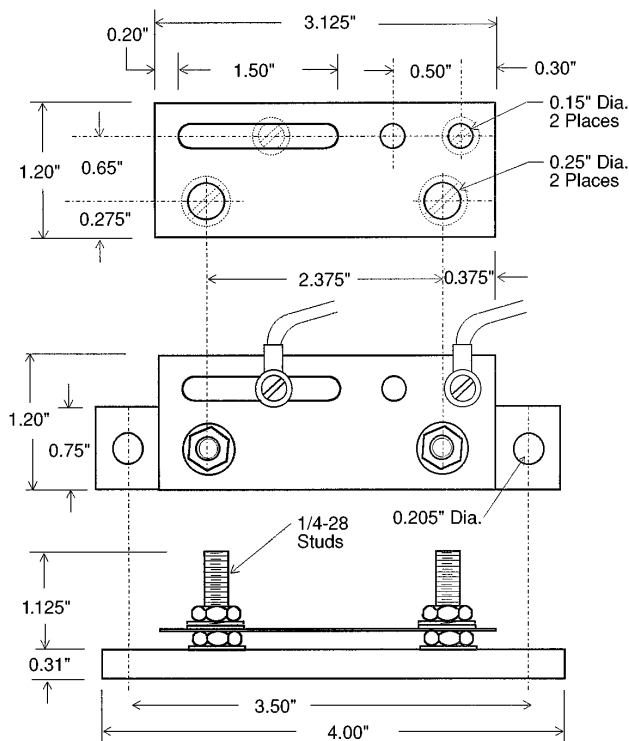
\*max continuous current 80A

\*\*max continuous current 140A

\*\*\*max continuous current 225A

### Note:

Final adjustments of these shunts must be done by the user.  
These shunts are not recommended for use at currents higher than rating.



Tolerances  $\pm .015$  for the hole diameters. Other tolerances  $\pm .030$  unless specified.  
Dimensions subject to change without notice.