

Tintri Global Center™ Software

Monitor and Control Multiple Tintri VMstore Systems as One

The Need for Scalability

The increased adoption of virtualization and private cloud for business-critical workloads, including tier-1 applications and end-user desktops, requires an infrastructure that scales easily, seamlessly, and predictably. Although virtualization and private cloud can provide significant benefits, they put extra strain on the underlying storage systems. As the rate of virtualization increase or cloud-based initiatives gain speed, making the right storage solution choice becomes critical to ensuring the success of key business initiatives.

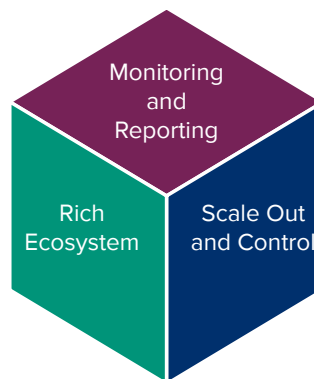
Tintri VMstore™ – Application-Aware Smart Storage for Virtualization and Cloud

Designed to meet the storage challenges introduced by virtualization and cloud, Tintri VMstore™ has the intelligence to understand and operate at the virtual machine (VM) level; with features that ensure the storage platform stays optimized and IT administrators are always in control of their VMs. With VMstore, scaling capacity and performance resources to support tens of thousands of VMs is easy and cost-effective. VMstore storage arrays – each appearing as a separate datastore – can be added in a simple ‘building block’ approach, making storage scaling efficient and predictable.

Extending VMstore Smart Storage with Tintri Global Center

Tintri Global Center is an intelligent storage control platform that enables multiple Tintri VMstore systems to seamlessly function as one. It allows storage, virtualization and cloud administrators to get a global view of the infrastructure and address common performance and configuration questions, such as:

- Why were the order processing VMs sluggish last night at 10 PM?
- Which VMs experienced the most storage growth in the last one week?
- What was the performance utilization of the web serving VMs in the last month?
- What is the replication status of my critical applications?



Tintri Global Center enables administrators to monitor and control multiple Tintri VMstore systems as one.

Scale-Out Multiple VMstore Systems to Function as One with Centralized Control

Large enterprise deployments can consist of tens or even hundreds of thousands of VMs spanning multiple VMstore systems. Scaling with Tintri is simply a matter of adding multiple VMstores, and Tintri Global Center makes administering the entire environment centrally easier. With VMstore and Tintri Global Center, IT teams can scale storage without the need for the complicated clustering technologies common with other storage platforms that are prone to failures and additional latencies.

Simplicity

- A single control point for up to 32 Tintri VMstore systems and up to 112,000 resident VMs across multiple data centers
- Monitor multiple Tintri VMstore systems as a single cluster without the complexity of clustering technology
- Easy deployment as a self-contained virtual appliance

Insight

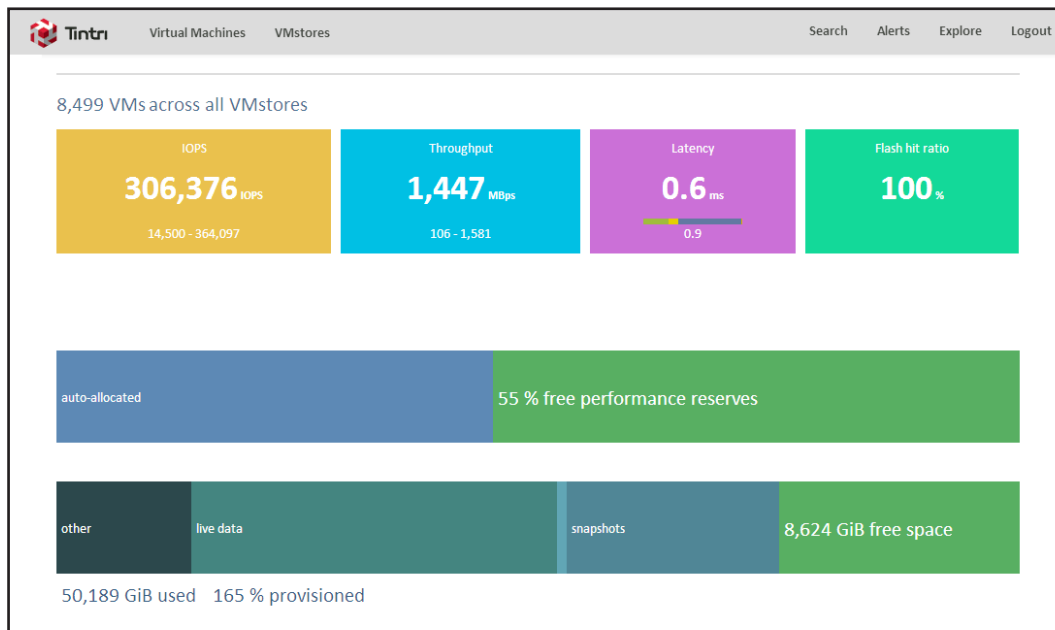
- End-to-end insight into individual VMs
- Key metrics on performance and capacity usage at an aggregate level as well as at a VMstore level
- Identify rapidly changing VMs across a group of Tintri VMstore systems
- Status of VMstores including model numbers and Tintri OS versions
- Create and export summary reports of Tintri VMstore systems and VMs with up to 30 days of statistics

Scalability and Extensibility

- Scale storage the same way as scaling compute with VMware vCenter — without complex clustering
- Integration with ReplicateVM™ includes replication topology display with link error status and lagging VM report
- PowerShell integration enables automating end-to-end workflows
- Centralized alert monitoring across all VMstores

Monitor and Administer Multiple VMstore Systems and their Resident VMs

Tintri Global Center provides administrators with a single, intuitive control panel for monitoring and reporting on multiple VMstore systems, enabling comprehensive end-to-end insight and control across all VMstore arrays and VMs. Tintri Global Center enables IT to view and create summary reports across all VMs – with in-depth information on storage performance (IOPS, latency, throughput), capacity, vCenter clusters, host status, protection status, and much more – with aggregate data across all VMstore systems, as well as the ability to filter and display results by individual VMstore systems.



Tintri Global Center provides insights into aggregate performance and capacity information across all VMstore arrays.

Data Protection and Disaster Recovery Monitoring

When combined with ReplicateVM™, Tintri Global Center provides per-VM as well as per-VMstore replication monitoring and topology views for reporting on data protection and disaster recovery service level compliance.

VM-Level Visibility and Automation with PowerShell Automation Toolkit

Tintri Global Center provides a PowerShell Automation Toolkit to allow automation that can act directly at the appropriate VM level for storage performance and maintenance. Tintri Global Center's PowerShell cmdlets can be integrated with VMware PowerCLI as well as third party automation tools.

Conclusion

Tintri Global Center extends the concept of smart storage, enabling IT to scale and control multiple VMstore systems from a single platform intuitively. The centralized control platform for monitoring and administering multiple VMstore systems provides administrators with comprehensive end-to-end insight into the performance of all VMstore arrays and their resident VMs.

Tintri VMstore and Tintri Global Center together enable IT to scale virtualization and cloud environments without the challenges of a traditional scale-out storage cluster. As a result, Tintri dramatically reduces the amount of time administrators need to configure and oversee storage for their virtualized environments, resulting in significantly lower IT costs and improved performance and predictability for all virtual deployments.

Contact us to schedule a demo of Tintri Global Center today.



303 Ravendale Dr.,
Mt. View CA 94043
650.810.8200
info@tintri.com | www.tintri.com