



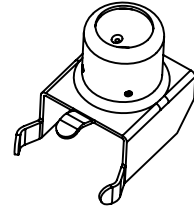
# RCA Jack

## MATERIAL

Insulator : Polyester  
Contact Pin : Brass

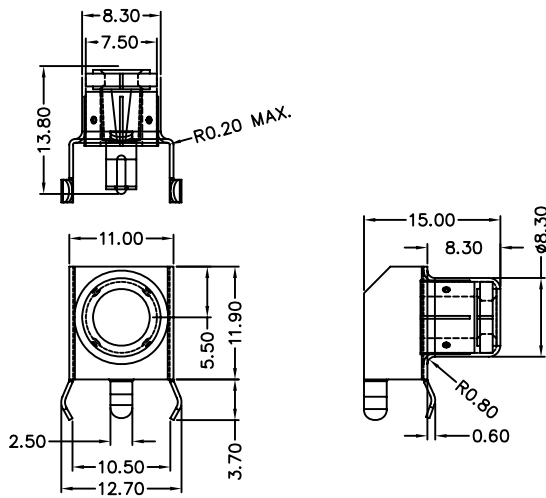
## SPECIFICATION

Current Rate : 0.2 AMP at 50V DC  
Insulation Resistance : 1000MΩMin.  
Contact Resistance : 30mΩMax. at DC 100mA  
Operation Temperature : -40°C to +70°C

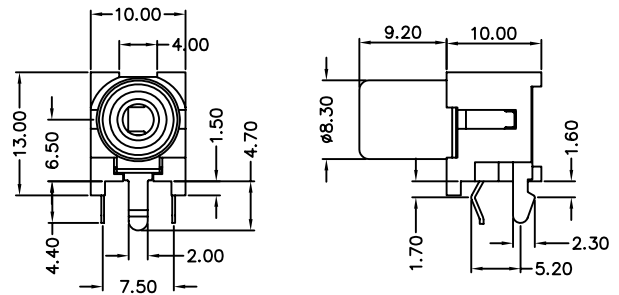


## Detail Dimensions

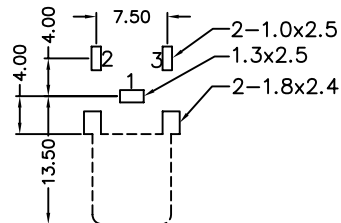
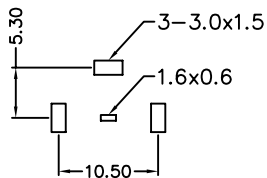
999-11-050036



999-11-057062



## Recommended P.C.B Layout



## Order Information

999-1 1 - 05 xxxx  
1 2

- 1: Bag package
- 2: Pinrex internal code

Standard Parts
999-11-050036
999-11-057062

Unit: mm