



D-Sub Connector Machine Pin R/A Type

■ MATERIAL

Insulator : Polyester
Contact Pin : Copper Alloy

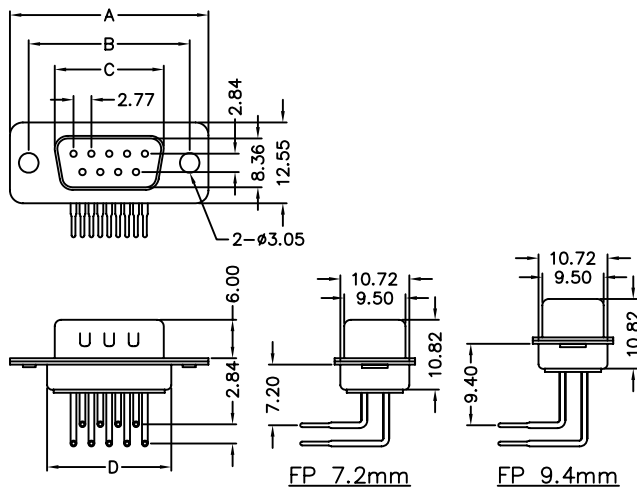
■ SPECIFICATION

Current Rate : 5 AMP
Insulation Resistance : 1000MΩMin. at DC 500V
Contact Resistance : 30mΩMax. at DC 100mA
Operation Temperature : -55°C to +105°C

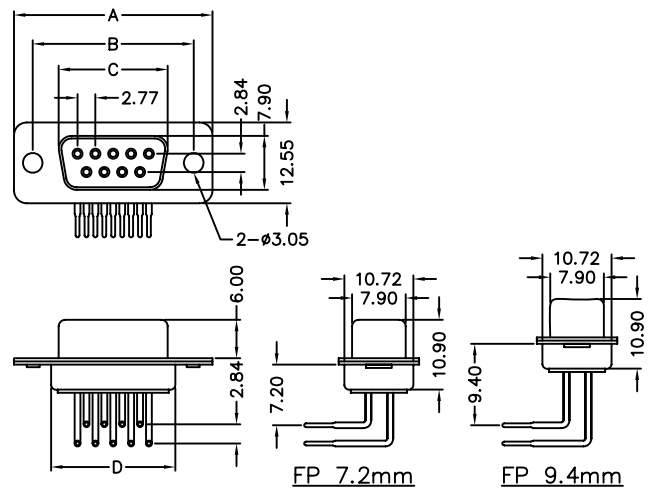


■ Detail Dimensions

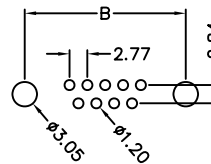
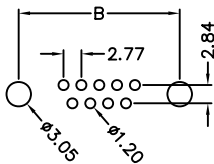
Male



Female



■ Recommended P.C.B Layout



■ Order Information

982-B1- x xx x 01
1 2 3

1. 4: Female FP 7.2mm
5: Male FP 7.2mm
6: Female FP 9.4mm
7: Male FP 9.4mm
2. No. of contacts
3. 0: without bracket
1: with bracket

Standard Parts
982-B1-4xx001
982-B1-5xx001
982-B1-6xx001
982-B1-7xx001

■ Number Of Contacts

Unit: mm

Poles	DIM A	DIM B	DIM C	DIM D				Poles	DIM A	DIM B	DIM C	DIM D			
9	30.81	24.99	16.92	19.28				9	30.81	24.99	16.33	19.28			
15	39.14	33.32	25.25	27.51				15	39.14	33.32	24.66	27.55			
25	53.04	47.04	38.96	41.28				25	53.04	47.04	38.38	41.28			
37	69.32	63.50	55.42	57.71				37	69.32	63.50	54.84	57.71			