



Mini USB Connector B Type

MATERIAL

Insulator : High Temperature Polyester
 Contact Pin : Copper Alloy
 Shell : Stainless Steel

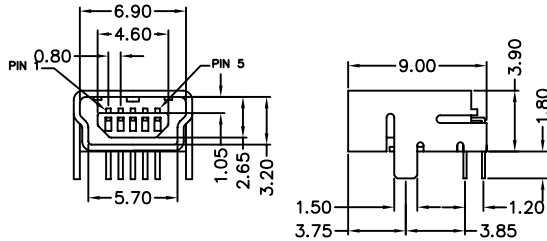
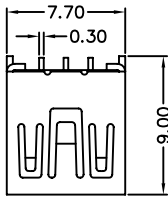
SPECIFICATION

Current Rate : 1 AMP at 250V DC
 Insulation Resistance : 1000MΩMin. at DC 500V
 Contact Resistance : 30mΩMax. at DC 100mA

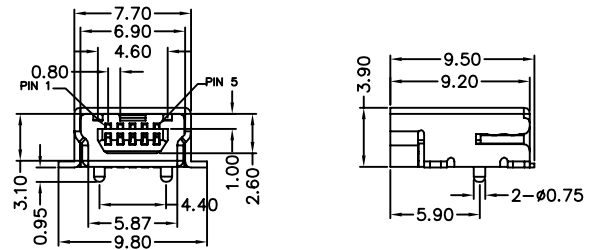
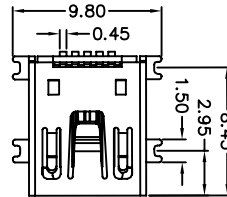


Detail Dimensions

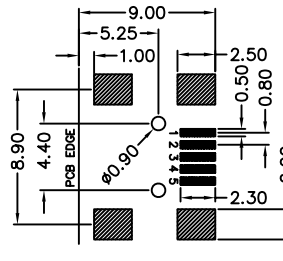
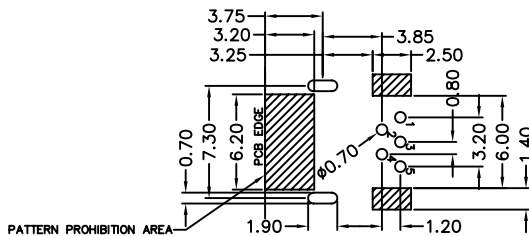
984-3x-805111



984-3x-805251



Recommended P.C.B Layout



Order Information

984-3x - 805 x xx
 1 2 3 4

1. 1: Tube package
 3: Reel package
 5: Tray package
2. No. of contacts
3. 1: R/A Type
 2: SMT R/A Type
4. Pinrex internal code

Standard Parts
984-31-805111
984-35-805251

Unit: mm