



D-Sub Connector Crimping Type

■ MATERIAL

Insulator : Polyester
Contact Pin : Copper Alloy

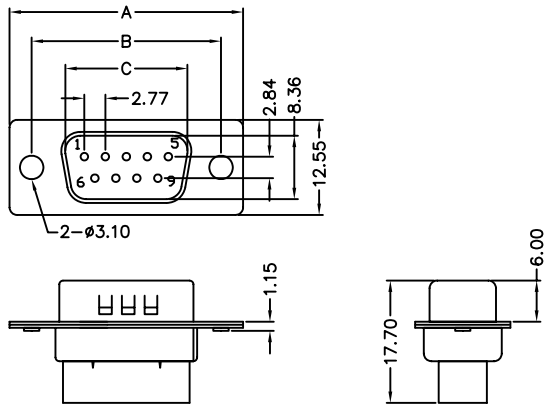
■ SPECIFICATION

Current Rate : 1 AMP
Insulation Resistance : 1000MΩMin. at DC 500V
Contact Resistance : 30mΩMax.
Operation Temperature : -55°C to +85°C

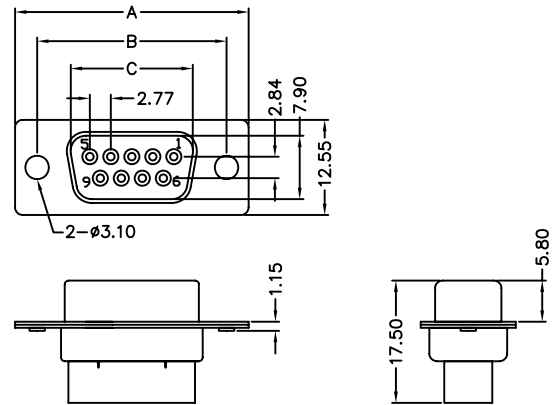


■ Detail Dimensions

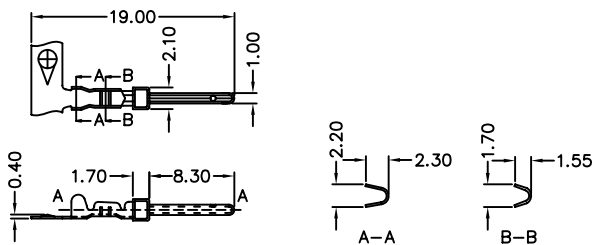
982-51-Axx005



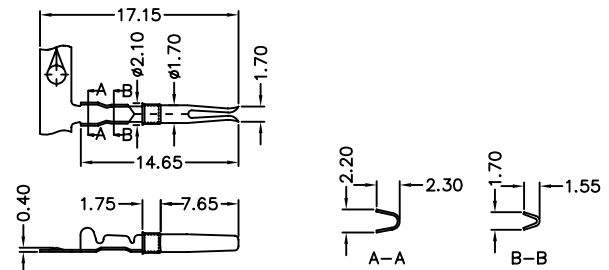
982-51-Bxx005



982-51-E00005



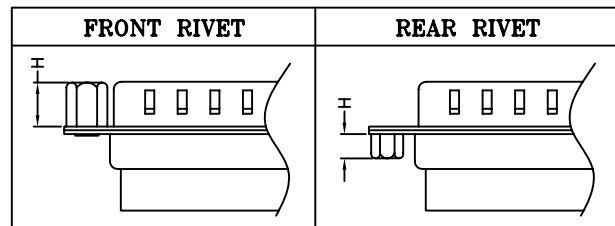
982-51-F00005



■ Order Information

982-51- x xx 0 x 5
1 2 3

- A: Male Housing
B: Female Housing
E: Male Terminal
F: Female Terminal
- No. of contacts
00: Terminal
- 0: Selective gold plating (for terminal)
0: None Accessories (for housing)



- 1: Front rivet #4-40 H=4.0mm
3: Rear rivet #4-40 H=4.0mm
7: Front rivet #4-40 H=5.8mm
8: Rear rivet #4-40 H=3.2mm

Standard Parts	
982-51-Axx005	
982-51-Bxx005	
982-51-E00005	
982-51-F00005	

■ Number Of Contacts

Unit: mm

Poles	DIM A	DIM B	DIM C		Poles	DIM A	DIM B	DIM C				
9	30.81	24.99	16.92		9	30.81	24.99	16.35				
15	39.25	33.32	25.25		15	39.25	33.32	24.51				
25	53.04	47.04	38.96		25	53.04	47.04	38.35				
37	69.50	63.50	55.42		37	69.50	63.50	54.84				