



D-Sub Connector IDC Type H=1.0mm

MATERIAL

Insulator : Polyester
Contact Pin : Copper Alloy

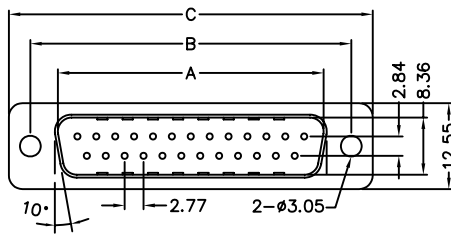
SPECIFICATION

Current Rate : 3 AMP
Insulation Resistance : 1000MΩMin. at DC 500V
Contact Resistance : 20mΩMax. at 1 AMP
Operation Temperature : -55°C to +105°C

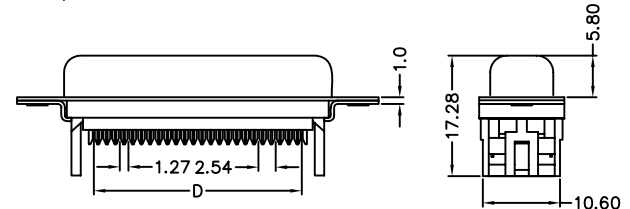
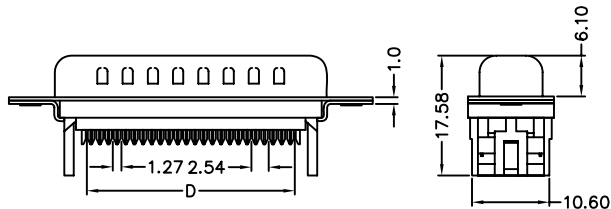
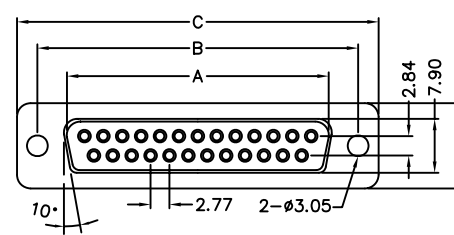


Detail Dimensions

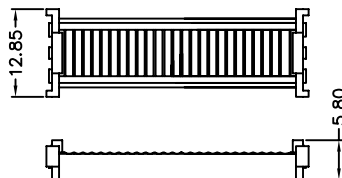
982-41-Axxx01



982-41-Bxxx01



Cover



Plastic SR



Metal SR



Order Information

982-41- x xx x 0 1
1 2 3

- 1. A: Male
- B: Female
- 2. No. of contacts
- 3. 0: Black Insulator ; Metal SR
- 1: Black Insulator ; Plastic SR
- 2: Black Insulator ; without SR

- 3: Blue Insulator ; Metal SR
- 4: Blue Insulator ; Plastic SR
- 5: Blue Insulator ; without SR

Standard Parts
982-41-Axxx01
982-41-Bxxx01

Number Of Contacts

Unit: mm

Poles	DIM A	DIM B	DIM C	DIM D				Poles	DIM A	DIM B	DIM C	DIM D			
9	16.92	24.99	30.81	10.16				9	16.33	24.99	31.16	10.16			
15	25.50	33.32	39.14	17.78				15	24.66	33.32	39.42	17.78			
25	38.96	47.04	53.04	30.48				25	38.38	47.04	53.34	30.48			
37	55.42	63.50	69.32	45.72				37	54.84	63.50	69.68	45.72			