



D-Sub Connector Solder Type

■ MATERIAL

Insulator : Polyester
Contact Pin : Copper Alloy

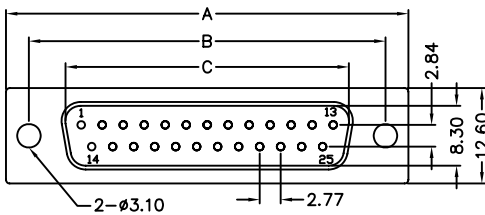
■ SPECIFICATION

Current Rate : 1 AMP
Insulation Resistance : 1000MΩMin. at DC 500V
Contact Resistance : 30mΩMax. at DC 100mA
Operation Temperature : -55°C to +105°C

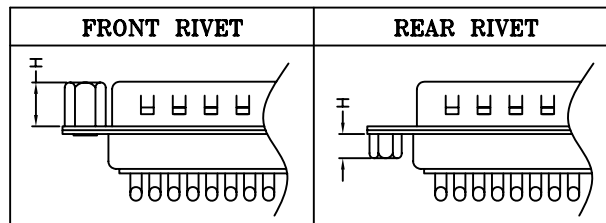
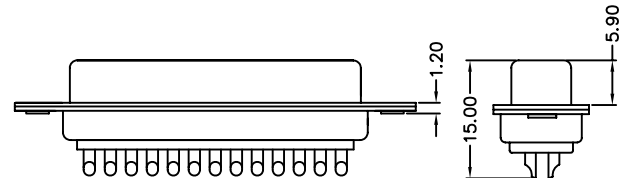
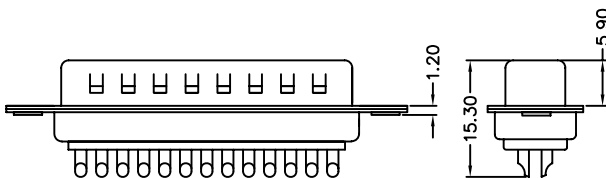
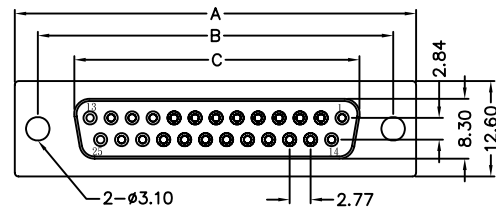


■ Detail Dimensions

982-31-Axx003



982-31-Bxx003



■ Order Information

982-31- x xx x x 3
1 2 3 4

Standard Parts
982-31-Axx003
982-31-Bxx003

- | | |
|-----------------------|------------------------------|
| 1. A: Male | 4. 0: None Accessories |
| B: Female | 1: Front rivet #4-40 H=4.0mm |
| 2. No. of contacts | 3: Rear rivet #4-40 H=4.0mm |
| 3. 0: Black Insulator | 7: Front rivet #4-40 H=5.8mm |
| 2: White Insulator | 8: Rear rivet #4-40 H=3.2mm |
| 8: Blue Insulator | |

■ Number Of Contacts

Unit: mm

Poles	DIM A	DIM B	DIM C					Poles	DIM A	DIM B	DIM C				
9	30.80	25.00	16.92					9	30.80	25.00	16.30				
15	39.20	33.32	25.25					15	39.20	33.32	24.70				
25	53.05	47.04	38.96					25	53.05	47.04	38.38				
37	69.40	63.50	55.42					37	69.40	63.50	54.80				