



# 2.54mm Card Edge IDC Type (for 1.27mm Flat Cable)

## ■ MATERIAL

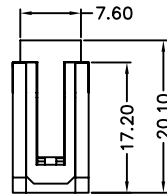
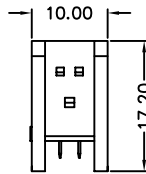
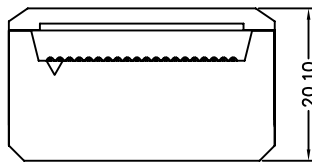
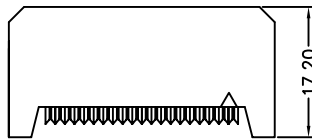
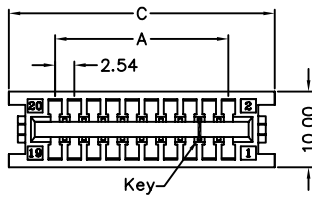
Insulator : Polyester  
Contact Pin : Copper Alloy

## ■ SPECIFICATION

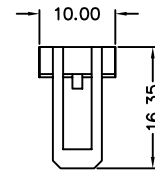
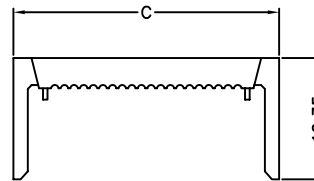
Current Rate : 1 AMP  
Insulation Resistance : 3000MΩMin. at DC 500V  
Contact Resistance : 30mΩMax. at DC 100mA  
Operation Temperature : -40°C to +105°C



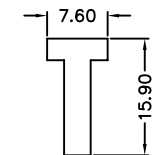
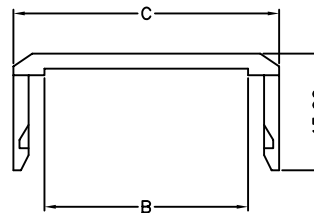
## ■ Detail Dimensions



### COVER



### STRAIN RELIEF



## ■ Order Information

986-51- xx 1 0 x 1  
1 2

1. No. of contacts
2. 0: without SR ; without Key  
1: without SR ; with Key  
2: with SR ; without Key  
3: with SR ; with Key

Standard Parts
986-51-xx1001
986-51-xx1011
986-51-xx1021
986-51-xx1031

## ■ Number Of Contacts

Unit: mm

Poles	DIM A	DIM B	DIM C	Poles	DIM A	DIM B	DIM C								
10	10.16	13.04	22.36	50	60.96	63.84	73.16								
14	15.24	18.12	27.44												
16	17.78	20.66	29.98												
20	22.86	25.74	35.06												
26	30.48	33.36	42.68												
34	40.64	43.52	52.84												
40	48.26	51.14	60.46												