



# 2.54mm Micro Match (for 1.27mm Flat Cable)

## MATERIAL

Insulator : Polyester  
Contact Pin : Brass

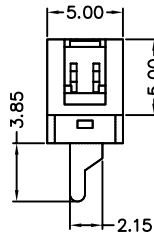
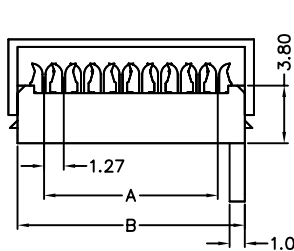
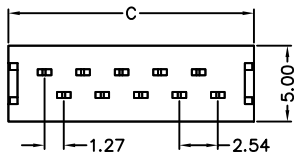
## SPECIFICATION

Current Rate : 1 AMP  
Insulation Resistance : 1000MΩMin. at DC 500V  
Contact Resistance : 10mΩMax. at DC 100mA  
Operation Temperature : -55°C to +105°C

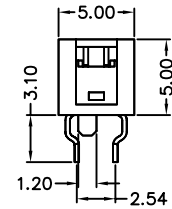
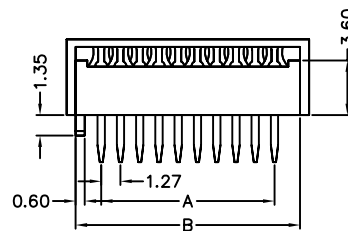
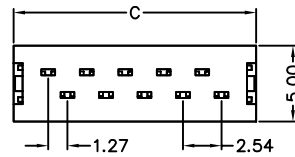


## Detail Dimensions

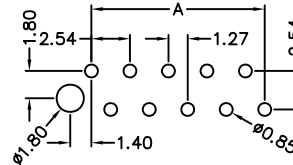
977-81-xx70x3



978-81-xx70x3



## Recommended P.C.B Layout



## Order Information

97 x -81- xx 7 0 x 3  
1            2            3

1. 7: IDC Type  
8: Dip Plug Type
2. No. of contacts
3. 1: Gold Flash  
2: Tin Plating

|                |
|----------------|
| Standard Parts |
| 977-81-xx7023  |
| 978-81-xx7023  |

## Number Of Contacts

Unit: mm

| Poles | DIM A | DIM B | DIM C | Poles | DIM A | DIM B | DIM C | Poles | DIM A | DIM B | DIM C | Poles | DIM A | DIM B | DIM C |
|-------|-------|-------|-------|-------|-------|-------|-------|-------|-------|-------|-------|-------|-------|-------|-------|
| 4     | 3.81  | 7.18  | 8.58  | 18    | 21.59 | 24.96 | 26.36 | 4     | 3.81  | 7.13  | 8.78  | 18    | 21.59 | 24.91 | 26.56 |
| 6     | 6.35  | 9.72  | 11.12 | 20    | 24.13 | 27.50 | 28.90 | 6     | 6.35  | 9.67  | 11.32 | 20    | 24.13 | 27.45 | 29.10 |
| 8     | 8.89  | 12.26 | 13.66 |       |       |       |       | 8     | 8.89  | 12.21 | 13.86 |       |       |       |       |
| 10    | 11.43 | 14.80 | 16.20 |       |       |       |       | 10    | 11.43 | 14.75 | 16.40 |       |       |       |       |
| 12    | 13.97 | 17.34 | 18.74 |       |       |       |       | 12    | 13.97 | 17.29 | 18.94 |       |       |       |       |
| 14    | 16.51 | 19.88 | 21.28 |       |       |       |       | 14    | 16.51 | 19.83 | 21.48 |       |       |       |       |
| 16    | 19.05 | 22.42 | 23.82 |       |       |       |       | 16    | 19.05 | 22.37 | 24.02 |       |       |       |       |