



2.54mm Ejector Header IDC Type (for 1.27mm Flat Cable)

MATERIAL

Insulator : Polyester
Contact Pin : Copper Alloy

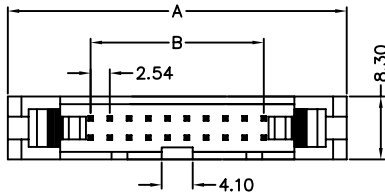
SPECIFICATION

Current Rate : 3 AMP
Insulation Resistance : 5000MΩMin. at DC 500V
Contact Resistance : 30mΩMax. at DC 100mA
Operation Temperature : -55°C to +105°C

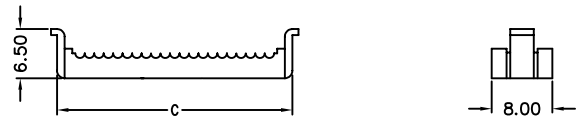
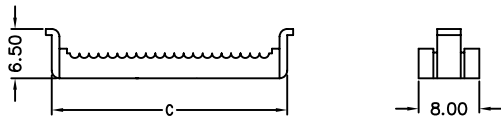
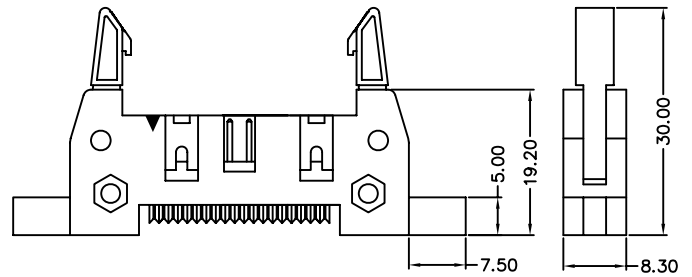
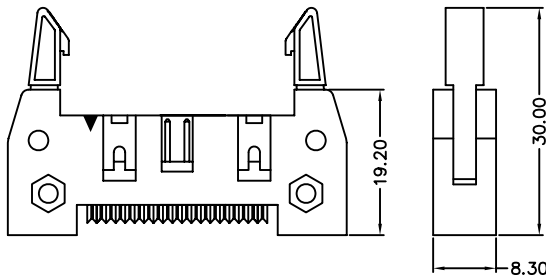
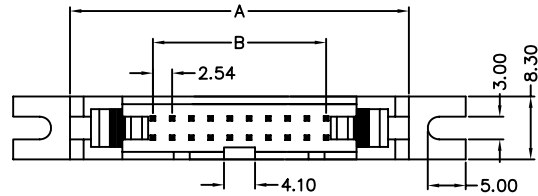


Detail Dimensions

51H-70-xxSG11



51H-70-xxSG31



Order Information

51H-70- xx S G x 1
1 2 3 4

1. No. of contacts
2. S: Selective gold plating
3. G: Gray Insulator
4. 1: without Mounting Ear ; with Long Ejector
- 2: without Mounting Ear ; with Short Ejector
- 3: with Mounting Ear ; with Long Ejector
- 4: with Mounting Ear ; with Short Ejector

Standard Parts
51H-70-xxSG11
51H-70-xxSG21
51H-70-xxSG31
51H-70-xxSG41

Number Of Contacts

Unit: mm

Poles	DIM A	DIM B	DIM C	Poles	DIM A	DIM B	DIM C							
10	32.00	10.16	17.40	34	62.48	40.64	47.88							
14	37.08	15.24	22.48	40	70.10	48.26	55.50							
16	39.62	17.78	25.02	50	82.80	60.96	68.20							
20	44.70	22.86	30.10	60	95.50	73.66	80.90							
24	49.78	27.94	35.18	64	100.58	78.74	85.98							
26	52.32	30.48	37.72											
30	57.40	35.56	42.80											