



# 2.0mm Dip Plug (for 1.0mm Flat Cable)

## ■ MATERIAL

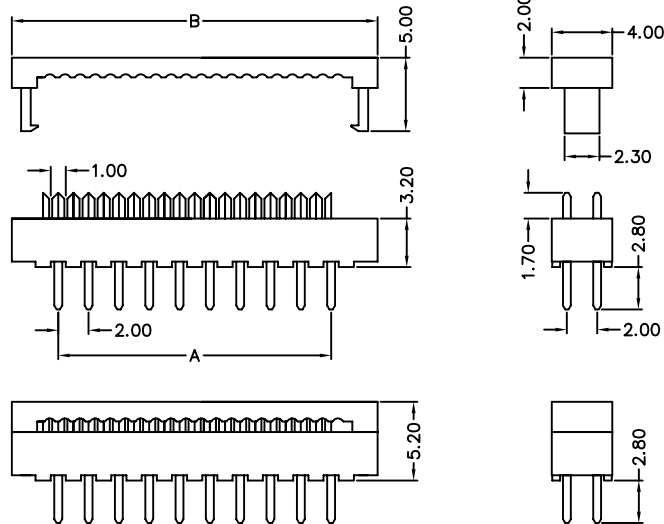
Insulator : Polyester  
Contact Pin : Phosphor Bronze

## ■ SPECIFICATION

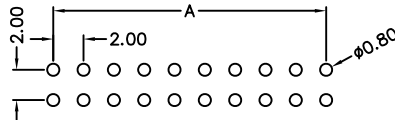
Current Rate : 1 AMP  
Insulation Resistance : 1000MΩMin. at DC 500V  
Contact Resistance : 10mΩMax. at DC 100mA  
Operation Temperature : -55°C to +105°C



## ■ Detail Dimensions



## ■ Recommended P.C.B Layout



## ■ Order Information

978-21- xx 01 x 1  
1 2

Standard Parts
978-21-xx0101

1. No. of contacts
2. 0: Tin Plating  
2: Selective Plating

## ■ Number Of Contacts

Unit: mm

Poles	DIM A	DIM B	Poles	DIM A	DIM B	Poles	DIM A	DIM B	Poles	DIM A	DIM B				
8	6.00	12.16	22	20.00	26.16	36	34.00	40.16	56	54.00	60.16				
10	8.00	14.16	24	22.00	28.16	38	36.00	42.16	60	58.00	64.16				
12	10.00	16.16	26	24.00	30.16	40	38.00	44.16	62	60.00	66.16				
14	12.00	18.16	28	26.00	32.16	44	42.00	48.16	64	62.00	68.16				
16	14.00	20.16	30	28.00	34.16	48	46.00	52.16	68	66.00	72.16				
18	16.00	22.16	32	30.00	36.16	50	48.00	54.16							
20	18.00	24.16	34	32.00	38.16	54	52.00	58.16							