



2.54mm IDC Connector (for 1.27mm Flat Cable)

■ MATERIAL

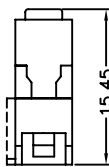
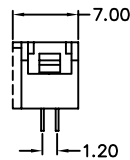
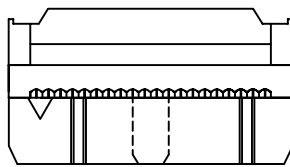
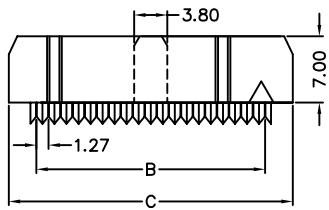
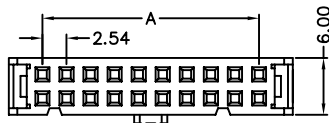
Insulator : Polyester
Contact Pin : Copper Alloy

■ SPECIFICATION

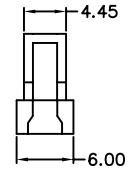
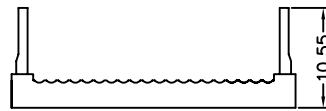
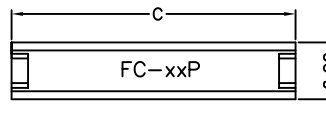
Current Rate : 1 AMP
Insulation Resistance : 1000MΩMin. at DC 500V
Contact Resistance : 15mΩMax. at DC 100mA
Operation Temperature : -40°C to +105°C



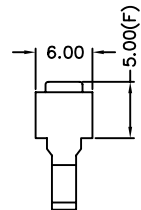
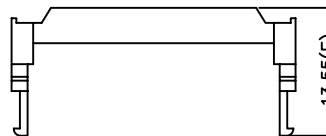
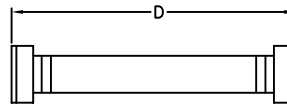
■ Detail Dimensions



COVER



STRAIN RELIEF



■ Order Information

977-11 - xx x x x 3
1 2 3 4

1. No. of contacts
2. 3: with Bump
4: without Bump
3. 6: without Strain Relief
7: with Strain Relief
4. 0: Selective Plating
2: Gold Flash

Standard Parts	Type
977-11-xx3603	with Bump ; w/o SR
977-11-xx3703	with Bump ; with SR
977-11-xx4603	w/o Bump ; w/o SR
977-11-xx4703	w/o Bump ; with SR

■ Number Of Contacts

Unit: mm

Poles	DIM A	DIM B	DIM C	DIM D	Poles	DIM A	DIM B	DIM C	DIM D	Poles	DIM A	DIM B	DIM C	DIM D
8	7.62	8.89	14.86	14.66	24	27.94	29.21	35.18	34.98	* 50	60.96	62.23	68.20	68.40
10	10.16	11.43	17.40	17.20	26	30.48	31.75	37.72	37.52	60	73.66	74.93	80.90	80.70
12	12.70	13.97	19.94	19.74	* 30	35.56	36.83	42.80	42.80	64	78.74	80.01	85.98	85.78
14	15.24	16.51	22.48	22.28	34	40.64	41.91	47.88	47.68	* E=13.45 F=4.85				
16	17.78	19.05	25.02	24.82	36	43.18	44.45	50.42	50.22					
18	20.32	21.59	27.56	27.36	40	48.26	49.53	55.50	55.30					
20	22.86	24.13	30.10	29.90	44	53.34	54.61	60.58	60.38					