



0.5mm FPC Socket ZIF SMT Straight Type

MATERIAL

Insulator : Polyester
Contact Pin : Phosphor Bronze

SPECIFICATION

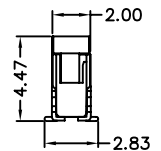
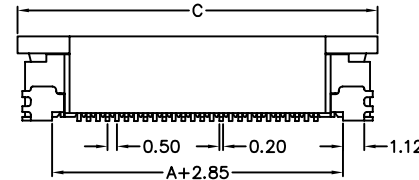
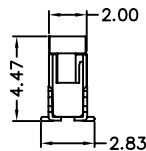
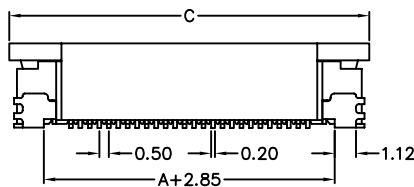
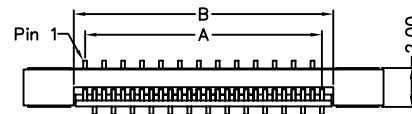
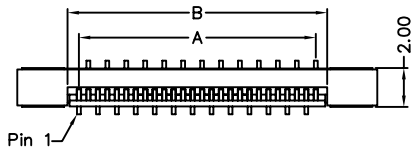
Current Rate : 0.5 AMP
Insulation Resistance : 50MΩMin.
Contact Resistance : 20mΩMax.
Operation Temperature : -40°C to +85°C



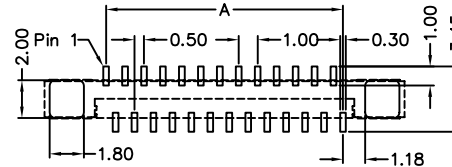
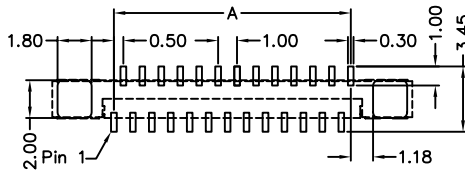
Detail Dimensions

979-41- 7 xx 100

979-41- 7 xx 110



Recommended P.C.B Layout

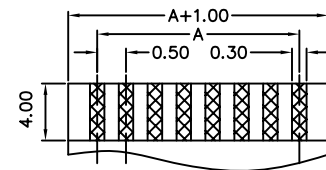


Order Information

979-41- 7 xx 1 x 0
1 2

1. No. of contacts (4~50)
2. 0: Standard Layout
- 1: Reverse Layout

Standard Parts
979-41-7xx100
979-41-7xx110



FPC/FFC T=0.30±0.05

Number Of Contacts

Unit: mm

Poles	DIM A	DIM B	DIM C	Poles	DIM A	DIM B	DIM C	Poles	DIM A	DIM B	DIM C	Poles	DIM A	DIM B	DIM C
4	1.50	2.70	8.00	13	6.00	7.20	12.50	22	10.50	11.70	17.00	31	15.00	16.20	21.50
5	2.00	3.20	8.50	14	6.50	7.70	13.00	23	11.00	12.20	17.50	32	15.50	16.70	22.00
6	2.50	3.70	9.00	15	7.00	8.20	13.50	24	11.50	12.70	18.00	33	16.00	17.20	22.50
7	3.00	4.20	9.50	16	7.50	8.70	14.00	25	12.00	13.20	18.50	34	16.50	17.70	23.00
8	3.50	4.70	10.00	17	8.00	9.20	14.50	26	12.50	13.70	19.00	35	17.00	18.20	23.50
9	4.00	5.20	10.50	18	8.50	9.70	15.00	27	13.00	14.20	19.50	36	17.50	18.70	24.00
10	4.50	5.70	11.00	19	9.00	10.20	15.50	28	13.50	14.70	20.00	37	18.00	19.20	24.50
11	5.00	6.20	11.50	20	9.50	10.70	16.00	29	14.00	15.20	20.50	38	18.50	19.70	25.00
12	5.50	6.70	12.00	21	10.00	11.20	16.50	30	14.50	15.70	21.00	39	19.00	20.20	25.50